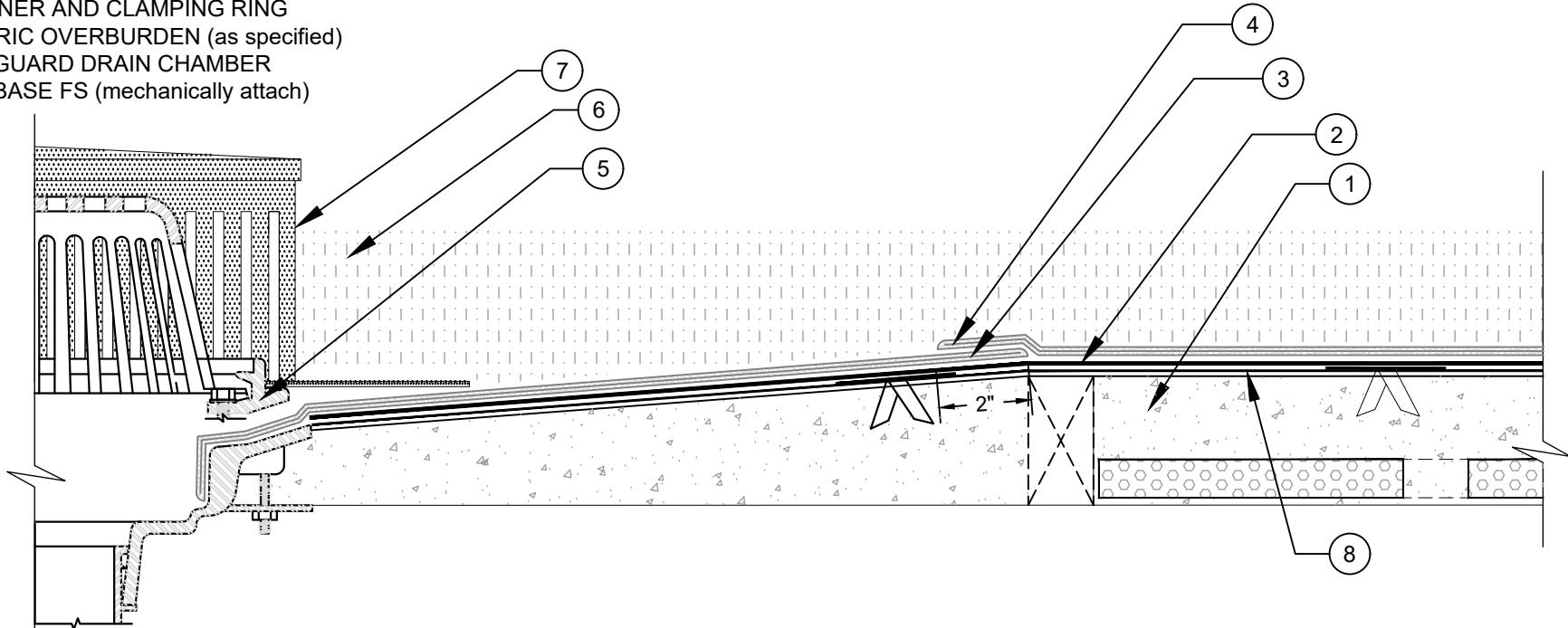


ROOF DRAIN

PARAPRO WATERPROOFING MEMBRANE - PRO BASE SERIES BASE PLY - LWIC

1. APPROVED SIPLAST LIGHTWEIGHT INSULATING CONCRETE
2. PRO BASE SERIES SHEET (fully adhere to prepared/primed surfaces)
3. PARAPRO 123 FLASHING SYSTEM (41" X 41", fully adhere)
4. PARAPRO ROOF MEMBRANE (fully adhere, extend 2" beyond the Parapro 123 Flashing System)
5. STRAINER AND CLAMPING RING
6. GENERIC OVERBURDEN (as specified)
7. PARAGUARD DRAIN CHAMBER
8. PARABASE FS (mechanically attach)



NOTES:

1. ROOF DRAIN COMPONENTS AND INSTALLATION GUIDELINES ARE SUPPLIED BY THE DRAIN MANUFACTURER.
2. REFER TO SIPLAST PREPARATION GUIDELINES FOR PROPER SURFACE TREATMENT OF ALL MATERIALS PRIOR TO APPLICATION OF PARAPRO MATERIALS.
3. PARAPRO CANNOT BE APPLIED IN THE ABOVE CONFIGURATION OVER MEMBRANES OR OTHER MATERIALS CONTAINING UNCURED, SOLVENT-BASED MATERIALS. CONTACT SIPLAST FOR FURTHER INFORMATION.
4. WHERE FLASHING REINFORCING IS INDICATED TO MAINTAIN PROPER ADHESION, TA-119 PRIMER IS REQUIRED FOR ALL PRO BASE SA SERIES FLASHING REINFORCING AND STRIPPING PLY APPLICATIONS. USE PA-1125 OR PA-917 PRIMER FOR ALL OTHER PRO BASE SERIES PRODUCTS THAT ARE NOT SELF-ADHESIVE. CONTACT SIPLAST FOR SPECIFIC REQUIREMENTS.
5. REFER TO SIPLAST FLEECE CUTTING RECOMMENDATIONS IN THE PARAPRO 123 FLASHING SYSTEM INSTALLER'S GUIDE FOR CONFIGURATIONS, CUTTING, FOLDING, AND LAPPING TECHNIQUES.
6. REQUIREMENTS AND RECOMMENDATIONS DETAILED IN CURRENT SIPLAST SPECIFICATIONS AND THE PARAPRO ROOF SYSTEM INSTALLER'S GUIDE SHALL APPLY IN ADDITION TO THE ABOVE DRAWING.

CAUTION: SIPLAST RECOMMENDS THAT ALL PRACTICES PERTAINING TO INDUSTRY STANDARD TORCH SAFETY REQUIREMENTS AND GUIDELINES BE FOLLOWED. THIS INCLUDES PERFORMING A FIRE WATCH FOLLOWING ANY TORCH APPLICATIONS. ALWAYS HAVE APPROVED FIRE EXTINGUISHING EQUIPMENT NEARBY WHEN USING A TORCH.

Scale: NTS

REF: ROOF DRAIN - PROBASE - PARAPRO - LWIC

Detail Number:
DE-LRM-20-02b



14911 Quorum Drive, Suite 600 - Dallas, Texas - 75254 (800) 922-8800

www.siplast.com

Rev: 02.06.2024