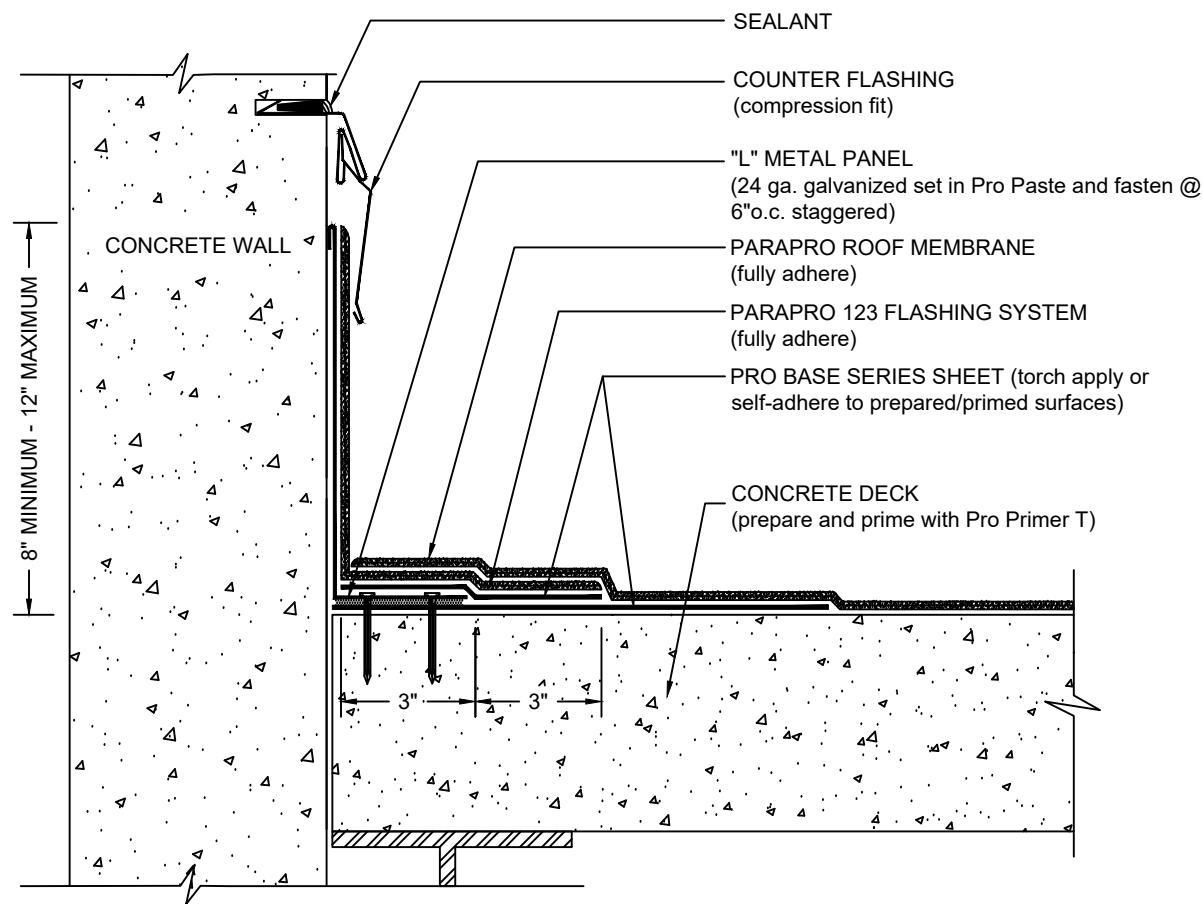


PARAPET - NON-WALL SUPPORTED DECK

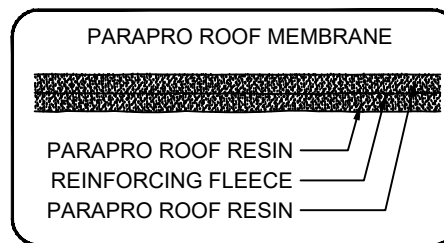
PARAPRO ROOF MEMBRANE - CONCRETE SUBSTRATE



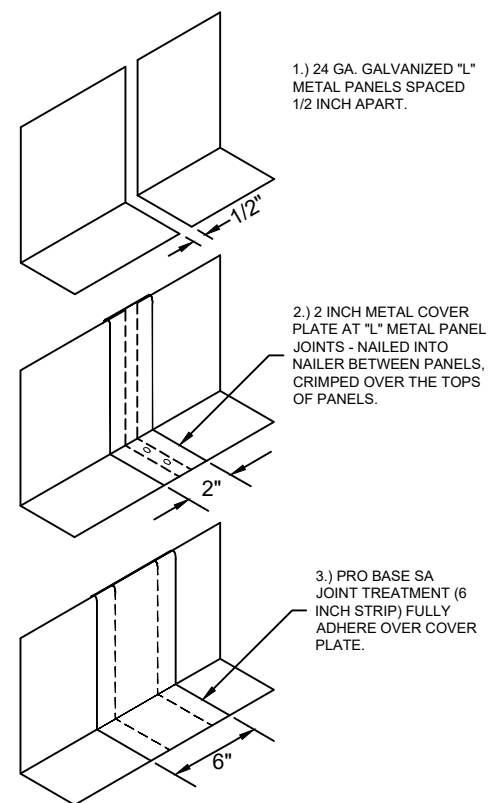
NOTES:

1. REFER TO SIPLAST PREPARATION GUIDELINES FOR PROPER SURFACE TREATMENT OF ALL MATERIALS PRIOR TO APPLICATION OF PRO BASE OR PARAPRO MATERIALS.
2. TREAT JOINTS BETWEEN SECTIONS OF "L" METAL WITH A 2" COVER PLATE AND A 6 INCH WIDE STRIP OF PRO BASE SA.
3. REQUIREMENTS AND RECOMMENDATIONS DETAILED IN CURRENT SIPLAST SPECIFICATIONS AND THE PARAPRO ROOF SYSTEM INSTALLER'S GUIDE SHALL APPLY IN ADDITION TO THE ABOVE DRAWING.

CAUTION: SIPLAST RECOMMENDS THAT ALL PRACTICES PERTAINING TO NRCA CERTA GUIDELINES BE FOLLOWED WHEN TORCHING METHODS ARE EMPLOYED. THIS INCLUDES PERFORMING A FIRE WATCH FOLLOWING ANY TORCH APPLICATIONS. ALWAYS HAVE APPROVED FIRE-EXTINGUISHING EQUIPMENT NEARBY.



L-METAL INSTALLATION JOINT TREATMENT



N.T.S



1000 Rochelle Boulevard - Irving, Texas - 75062 (800) 922-8800 www.siplast.com

Ref: Parapet (non supp) - Ppro - Concrete - 12.8.18

DE-LRM-18-05b