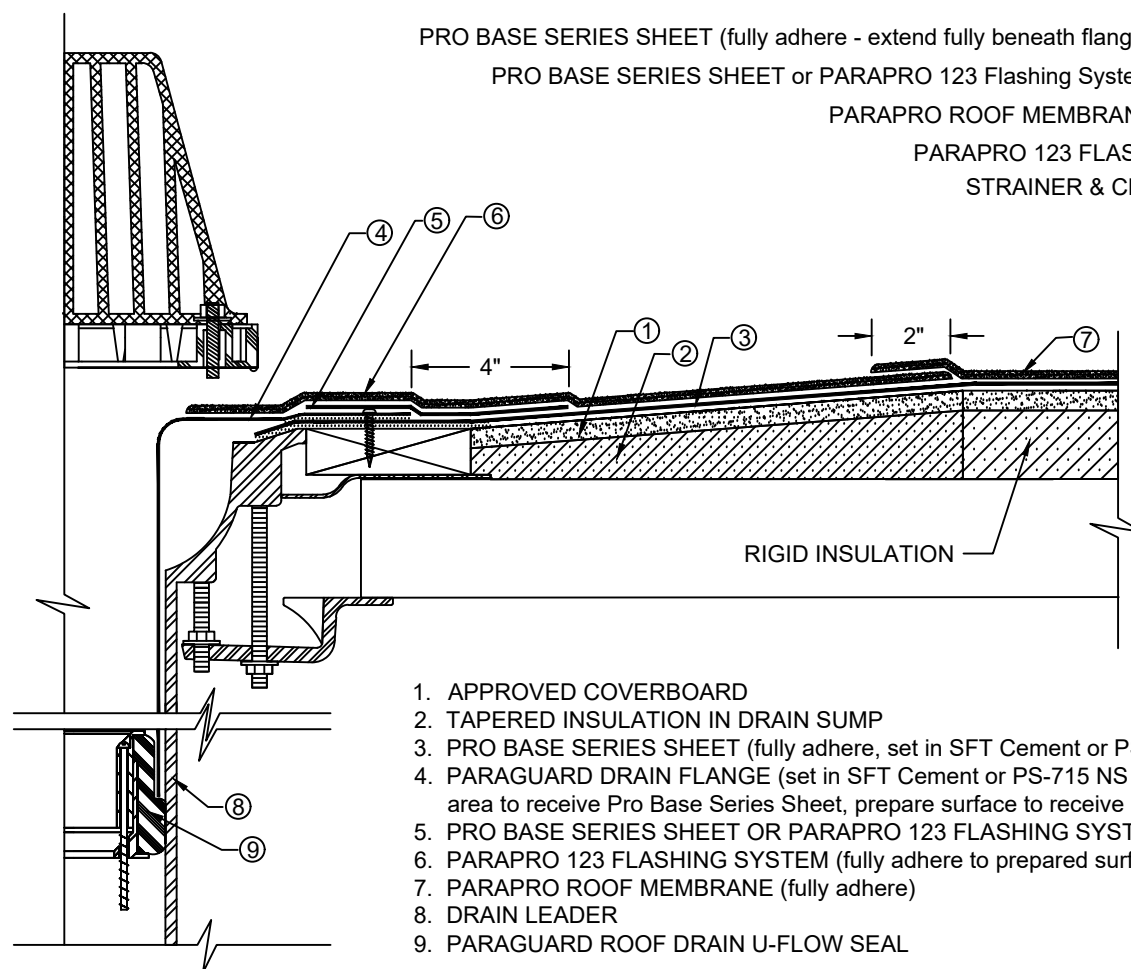


PARAGUARD ROOF DRAIN

PARAPRO ROOF MEMBRANE / PRO BASE SERIES BASE PLY - INSULATED

OVERHEAD VIEW



1. APPROVED COVERBOARD
2. TAPERED INSULATION IN DRAIN SUMP
3. PRO BASE SERIES SHEET (fully adhere, set in SFT Cement or PS-209 Elastomeric Sealant 6" around drain opening)
4. PARAGUARD DRAIN FLANGE (set in SFT Cement or PS-715 NS Elastomeric Sealant, fasten flange to substrate, prime area to receive Pro Base Series Sheet, prepare surface to receive Parapro 123 Flashing System)
5. PRO BASE SERIES SHEET OR PARAPRO 123 FLASHING SYSTEM (fully adhere, extend 4" beyond drain flange)
6. PARAPRO 123 FLASHING SYSTEM (fully adhere to prepared surfaces, allow to cure prior to application of field membrane)
7. PARAPRO ROOF MEMBRANE (fully adhere)
8. DRAIN LEADER
9. PARAGUARD ROOF DRAIN U-FLOW SEAL

NOTES:

1. WHERE PRIMER IS INDICATED TO MAINTAIN PROPER ADHESION, TA-119 PRIMER IS REQUIRED FOR ALL PRO BASE SA SERIES FLASHING REINFORCING AND STRIPPING PLY APPLICATIONS. USE PA-1125 OR PA-917 LS PRIMER FOR ALL OTHER PRO BASE SERIES PRODUCTS THAT ARE NOT SELF-ADHESIVE SHEETS. CONTACT SIPLAST FOR SPECIFIC REQUIREMENTS.
2. FOLLOW SIPLAST SPECIFICATIONS FOR INSTALLATION OF PARAGUARD ROOF DRAIN COMPONENTS.
3. PARAPRO CANNOT BE APPLIED IN THE ABOVE CONFIGURATION OVER MEMBRANES OR OTHER MATERIALS CONTAINING UNCURED, SOLVENT-BASED MATERIALS. CONTACT SIPLAST FOR FURTHER INFORMATION.
4. REFER TO SIPLAST FLEECE CUTTING RECOMMENDATIONS FOR CONFIGURATIONS, CUTTING, FOLDING, AND LAPPING TECHNIQUES.
5. REQUIREMENTS AND RECOMMENDATIONS DETAILED IN CURRENT SIPLAST SPECIFICATIONS AND THE PARAPRO 123 FLASHING SYSTEM INSTALLERS GUIDE SHALL APPLY IN ADDITION TO THE ABOVE DRAWING.

CAUTION: SIPLAST RECOMMENDS THAT ALL PRACTICES PERTAINING TO NRCA CERTA GUIDELINES BE FOLLOWED WHEN TORCHING METHODS ARE EMPLOYED. THIS INCLUDES PERFORMING A FIRE WATCH FOLLOWING ANY TORCH APPLICATIONS. ALWAYS HAVE APPROVED FIRE-EXTINGUISHING EQUIPMENT NEARBY.

N.T.S



1000 Rochelle Boulevard - Irving, Texas - 75062 (800) 922-8800 www.siplast.com

Ref: Pguard Drain - ProBase - Ppro - Ins. - 10.2.18

DE-LRM-17-02d