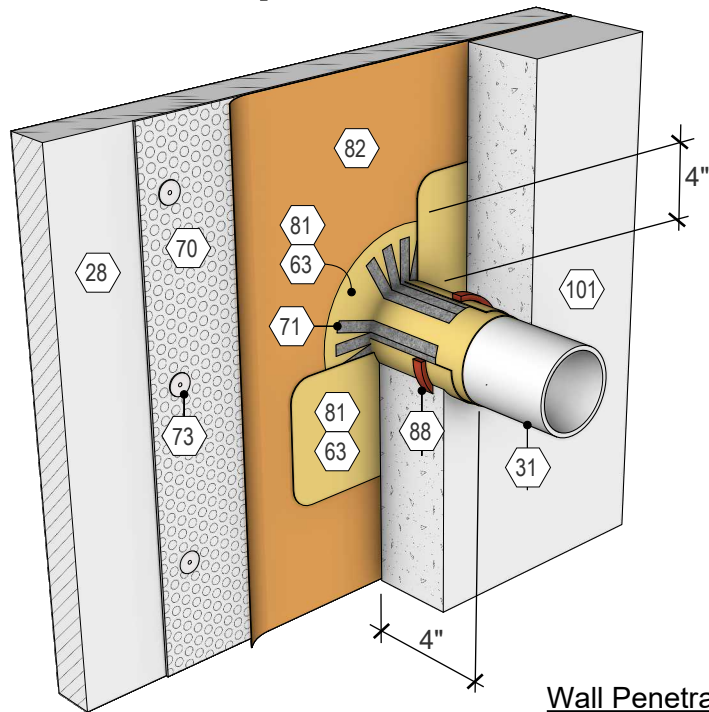


Floor Penetration



Wall Penetration

Keynote Reference Summary

- <06> Siplast PS-715 NS Elastomeric Sealant
- <28> Soil Retention System
- <31> Pipe
- <61> Siplast Parafast Fasteners and Plates
- <63> Siplast Parapro PMMA Flashing System
- <64> Roof or waterproofing overburden
- <70> Siplast TeraPROOF 10-11 Drainage Mat
- <71> Siplast Pro Fleece
- <72> Siplast TeraPROOF Protection CS1000
- <81> Siplast TeraPROOF STP Liquid Membrane
- <82> Siplast TeraPROOF Pre-Applied V-SBS Membrane
- <83> Siplast TeraPROOF Pre-Applied H-SBS Membrane
- <100> #57 stone
- <103> Sub Grade

Refer to TeraPROOF Installer's Guide for detailed instructions regarding the specific products, personal protection, storage, handling, relevant codes, installation tools, substrate preparation, and general application guidelines. Coordinate installation of Siplast TeraPROOF products with the adjoining and subsequent trades to ensure compatibility and continuity with the roofing, waterproofing, and above-grade facade systems.

1. Install the area surrounding the penetration with <82> **Siplast TeraPROOF Pre-Applied V-SBS Membrane** or <83> **Siplast TeraPROOF Pre-Applied H-SBS Membrane** following Detail 00b Pre-Applied SBS - Application Overview including the following materials:
Wall Application: <28> **Soil Retention System**, <70> **Siplast TeraPROOF 10-11 Drainage Mat**, <61> **Siplast Parafast Fasteners and Plates**.
Floor Application: <72> **Siplast TeraPROOF Protection CS1000**, <100> **#57 stone**, <103> **Sub-grade**.
2. Ensure <31> **pipes**, drains, equipment, etc. to be flashed are clean, prepared, and secured to prevent movement, and all gaps and breaks between substrates are sealed using <06> **Siplast PS-715 NS Elastomeric Sealant** or a compatible approved sealant before applying the TeraPROOF materials.
3. Before applying the <81> **TeraPROOF STP Liquid Membrane**, pre-cut the <71> **Siplast Pro Fleece** reinforcement fabric to conform to penetrations. Cut reinforcing to ensure the <81> **TeraPROOF STP Liquid Membrane** is fully reinforced and overlapped at finger-cuts, side-laps, and end-laps to eliminate skips or breaks in the reinforcement.
4. For reinforced flashings at pipe penetrations, apply a first coat of 60 mils (1.5 mm) of <81> **TeraPROOF STP Liquid Membrane** to a minimum of 4 inches (100 mm) on the penetration and a minimum of 4 inches (100 mm) beyond the penetration.
5. Immediately place the <71> **Siplast Pro Fleece** reinforcement fabric into the still wet <81> **TeraPROOF STP Liquid Membrane**. The reinforcement fabric should cover a minimum of 4 inches (100 mm) on the pipe penetration and a minimum of 4 inches (100 mm) beyond the penetration. Work the reinforcement fabric into the <81> **TeraPROOF STP Liquid Membrane** to prevent wrinkles. Ensure that the <71> **Siplast Pro Fleece** reinforcement fabric is adequately saturated and free of "dry" reinforcement, voids, air pockets and wrinkles using recommended tools.
6. Apply a second coat of <81> **Siplast TeraPROOF STP Liquid Membrane** 60 mils (1.5 mm) thick over the <71> **Siplast Pro Fleece** reinforcement fabric extending a minimum of 1/4 inch (6 mm) beyond the reinforcement fabric.
7. Install <88> **Concrete Waterstop**, ensuring it will sit 2 inches below the surface of the <101> **concrete structure** when it is placed.

General Notes:

1. Utilizing <63> **Siplast Parapro PMMA Flashing Systems** is an approved alternate to <81> **TeraPROOF STP Liquid Membrane** for all the steps in this detail. All additional requirements in the Siplast Parapro Flashing System Installer's Guide must also be followed.