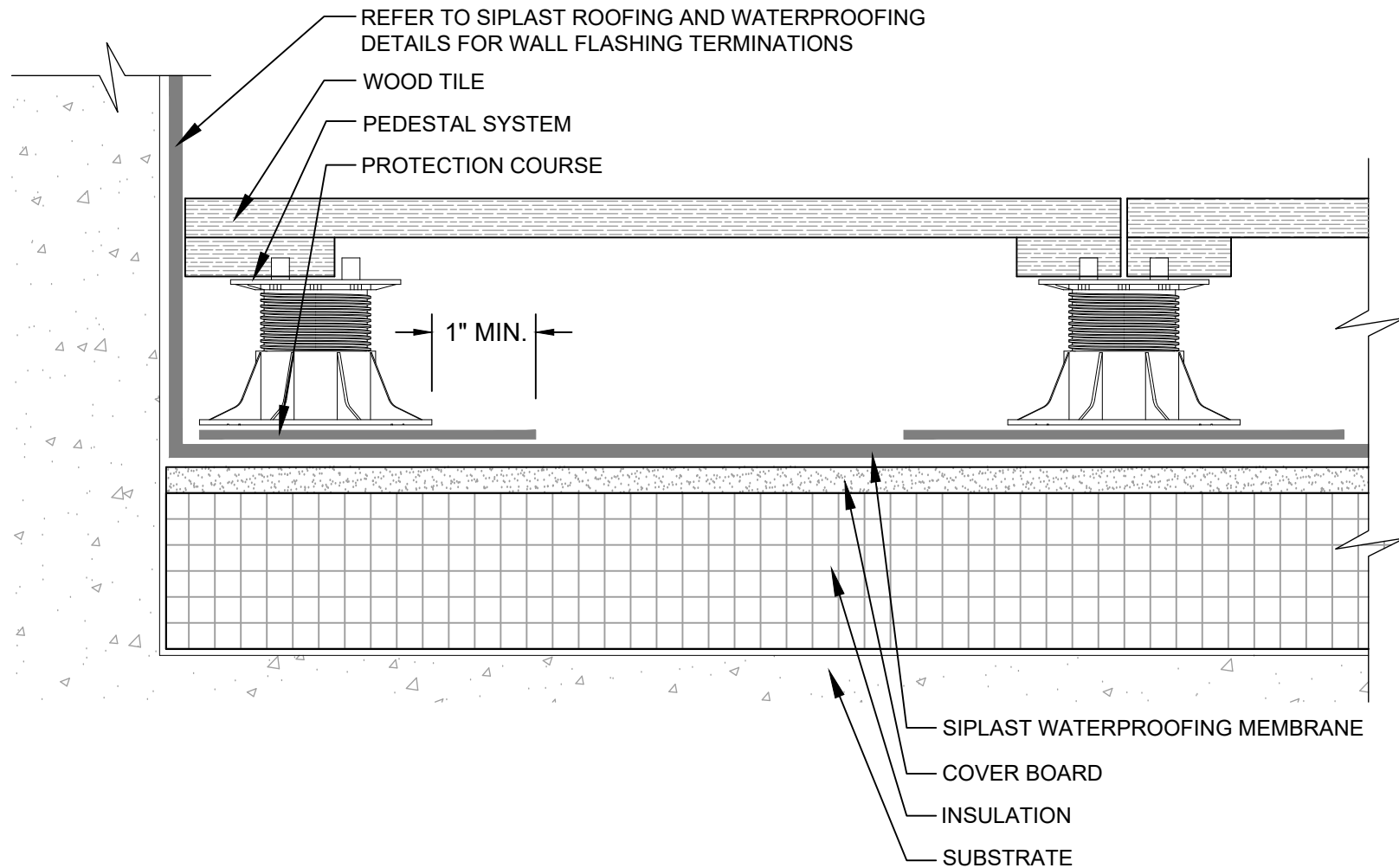


PEDESTAL /PAVER AT PARAPET WOOD TILE - CONVENTIONAL



NOTES:

1. REQUIREMENTS AND RECOMMENDATIONS DETAILED IN CURRENT SIPLAST SPECIFICATIONS AND SYSTEM SPECIFIC DETAILS SHALL APPLY IN ADDITION TO THE ABOVE DRAWING.
2. ADDITIONAL BALLAST OVER XPS MAY BE REQUIRED TO MEET WIND UPLIFT REQUIREMENTS. CONSULT TILE MANUFACTURER FOR ADDITIONAL INFORMATION.
3. DESIGNER OF RECORD TO VERIFY CAPACITY OF DECK/SUBSTRATE TO ACCOMMODATE LOAD OF THE OVERBURDEN COMPONENTS.

CAUTION: SIPLAST RECOMMENDS THAT ALL PRACTICES PERTAINING TO INDUSTRY STANDARD TORCH SAFETY REQUIREMENTS AND GUIDELINES BE FOLLOWED. THIS INCLUDES PERFORMING A FIRE WATCH FOLLOWING ANY TORCH APPLICATIONS. ALWAYS HAVE APPROVED FIRE EXTINGUISHING EQUIPMENT NEARBY WHEN USING A TORCH.

Scale: NTS

REF: PEDESTAL/PAVER AT PARAPET - WOOD TILE - CONVENTIONAL



14911 Quorum Drive, Suite 600 - Dallas, Texas - 75254 (800) 922-8800

www.siplast.com

Detail Number:
DE-ATY-54-05a

Rev: 05.08.2024