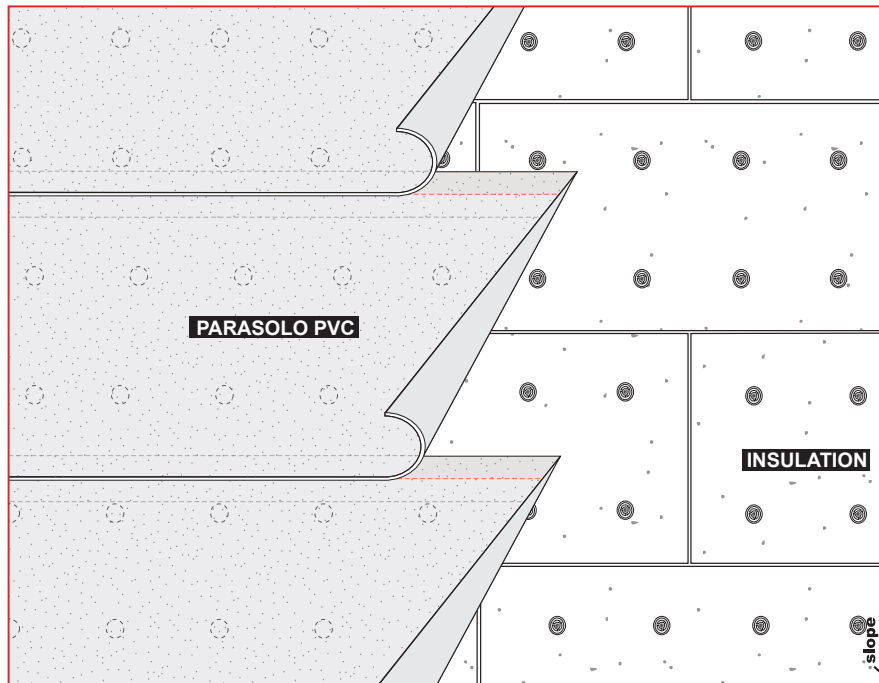


PARASOLO ROOF MEMBRANE SYSTEMS

HEAT INDUCTION APPLICATION



SLOPE 0" - 4" per ft.*

MATERIALS per 100 sq. ft.

APPROVED INSULATION

PARASOLO PVC KEE SMOOTH

OR

PARASOLO PVC SMOOTH

PARAFAST FASTENERS

PARAFAST RHINO BOND® FASTENING PLATES

* Contact Siplast for higher slope requirements.

n.t.s.

Specification: SPRBNTIN - All thickness - Smooth

Requirements and recommendations detailed in the Siplast catalog and Siplast long form specifications shall apply in addition to the following recommendations and specifications.

Application

1. Install approved insulation according to manufacturer's recommendations and FM Global requirements, if applicable. The edges of insulation panels should be in moderate contact without forcing and cut to fit neatly against adjoining surfaces. The insulation layer should present a smooth surface to accept the roof membrane. Mechanically attach approved insulation using Parafast RhinoBond Fastening Plates according to Siplast requirements and project conditions.
2. Beginning at the low point of the roof, loose-lay Parasolo membrane, lapping sides a minimum of 3 inches and ends a minimum of 3 inches.
3. Heat weld all laps using approved hot-air weld equipment.
4. Weld Parasolo membrane to each Parafast RhinoBond Fastening Plate using approved induction welding equipment.

Ref. #: Parasolo - Rhinobond - Rigid
Rev: 02.07.20



1000 Rochelle Boulevard Irving, Texas 75062 (800) 922-8800 FAX (469) 995-2206