

Keynote Reference Summary

- <05> Siplast WALLcontrol Modified Silicone (STPE) VP Liquid Flashing
- <06> Siplast PS-715 NS Elastomeric Sealant
- <23> Continuous Insulation
- <61> Siplast Parafast Fasteners and Plates
- <70> Siplast TeraPROOF 10-11 Drainage Mat or Siplast Paradrain Mat
- <71> Siplast Pro Fleece
- <72> Siplast TeraPROOF Protection CS1000
- <81> TeraPROOF STP Liquid Membrane
- <101> Concrete Structure
- <103> Grade or Sub-grade

Refer to TeraPROOF Installer's Guide for detailed instructions regarding the specific products, personal protection, storage, handling, relevant codes, installation tools, substrate preparation, and general application guidelines. Coordinate installation of Siplast TeraPROOF products with the adjoining and subsequent trades to ensure compatibility and continuity with the roofing, waterproofing, and above-grade facade systems.

1. Examine all substrates before applying <81> **TeraPROOF STP Liquid Membrane**. Ensure substrates are clean, repaired, prepared and otherwise satisfactory before applying the TeraPROOF materials. Prepare and pretreat minor concrete irregularities by working-in the liquid membrane. Use a brush, roller, or trowel to fill imperfections and provide a smooth, uniform surface before applying the liquid membrane waterproofing.
2. The <81> **TeraPROOF STP Liquid Membrane** is generally installed first at penetrations, terminations, and transitions. Refer to the following details:
 - 6.11 Post-Applied Liquid - Foundation
 - 6.12 Post-Applied Liquid - Termination at Grade
 - 6.13 Post-Applied Liquid - Protected Horizontal Waterproofing
 - 6.14 Post-Applied Liquid - Drain and Pipe Penetrations
 - 6.15 Post-Applied Liquid - Transition to Horizontal Waterproofing
 - 7.20 Pre-Applied SBS - Transition to Post-Applied Liquid
3. For all inside angle transitions, apply a bead of <81> **TeraPROOF STP Liquid Membrane** along the joint, tool in the material to create a 45 degree cant with a 3/4 inch face.
4. For inside and outside reinforced corners, apply a first coat of 60 mils (1.5 mm) of <81> **TeraPROOF STP Liquid Membrane** using a brush or roller 3 inches onto the horizontal and vertical surfaces. Immediately place the <71> **Siplast Pro Fleece** reinforcement fabric into the still wet <81> **TeraPROOF STP Liquid Membrane**. Apply a second coat of <81> **Siplast TeraPROOF STP Liquid Membrane** 60 mils (1.5 mm) thick over the <71> **Siplast Pro Fleece** reinforcement fabric extending a minimum of 1/4 inch (6 mm) beyond the reinforcement fabric.
5. For all application areas that utilize <71> **Siplast Pro Fleece**, work the reinforcement fabric into the liquid membrane to prevent wrinkles. Ensure that the reinforcing fabric is adequately saturated and free of "dry" reinforcement, voids, air pockets, and wrinkles using recommended tools. Cut the reinforcing fabric to conform to conditions so that the liquid membrane is fully reinforced and overlapped at cuts, side-laps and end-laps.
6. Install subsequent coats of <81> **Siplast TeraPROOF STP Liquid Membrane** within 72 hours of the initial application. For additional coats and at tie-ins, ensure the surface is clean and free of foreign debris that may interfere with adhesion.
7. Install the <72> **Siplast TeraPROOF Protection CS1000** with the fleece facing the membrane or <70> **Siplast TeraPROOF 10-11 Drainage Mat** with the filter fabric facing outward using backfill to hold in place or using an adhesive such as <05> **Siplast WALLcontrol Modified Silicone (STPE) VP Liquid Flashing**. Lap the fabric selvage edge of the drainage mat onto the subsequent courses of the drainage board and top edges.
8. Install <23> **Insulation** per the manufacturers instructions.

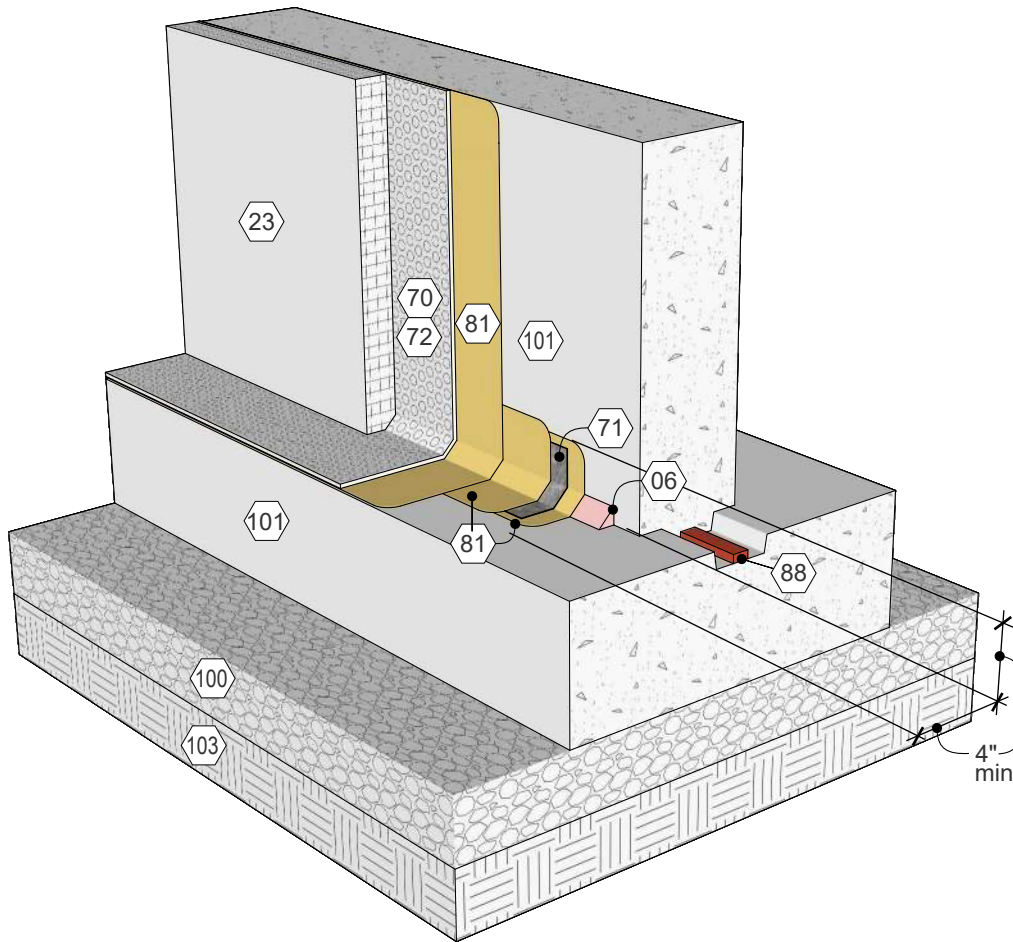
Proper application is the responsibility of the installation professional. Surface preparation, substrate adhesion, proper installation, and other variables outside of the manufacturer's control are the sole responsibility of the user. Any field visits by Siplast representatives are solely for the administration of Siplast's guarantee program.

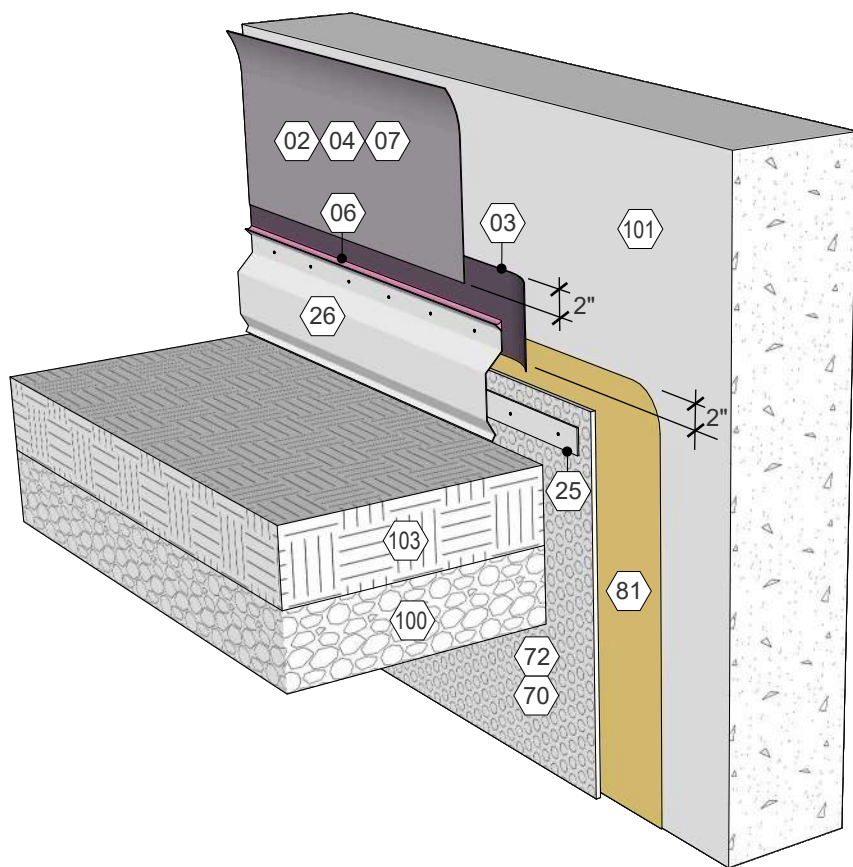
Keynote Reference Summary

- <6> Siplast PS-715 NS Elastomeric Sealant
- <23> Continuous Insulation
- <70> Siplast TeraPROOF 10-11 Drainage Mat or Siplast Paradrain Mat
- <71> Siplast Pro Fleece
- <72> Siplast TeraPROOF Protection CS1000
- <81> Siplast TeraPROOF STP Liquid Membrane
- <88> Siplast TeraPROOF Waterstop
- <100> #57 stone
- <101> Concrete Structure
- <103> Grade or Sub-grade

Refer to TeraPROOF Installer's Guide for detailed instructions regarding the specific products, personal protection, storage, handling, relevant codes, installation tools, substrate preparation, and general application guidelines. Coordinate installation of Siplast TeraPROOF products with the adjoining and subsequent trades to ensure compatibility and continuity with the roofing, waterproofing, and above-grade facade systems.

1. Where applicable, when placing the concrete structure, install <88> **Siplast TeraPROOF Waterstop** at concrete cold joints, such as the concrete footing to concrete wall joints. Ensure at least 2 inches of concrete cover on either side of the waterstop material. See the installation guide for more information on waterstop preparation, attachments, and installation.
2. Examine all substrates before applying <81> **TeraPROOF STP Liquid Membrane**. Ensure substrates are clean, repaired, prepared and otherwise satisfactory before applying the TeraPROOF materials. Prepare and pretreat minor concrete irregularities by working in <81> **TeraPROOF STP Liquid Membrane**. Use a brush, roller or trowel to fill imperfections and provide a smooth, uniform surface before applying the <81> **TeraPROOF STP Liquid Membrane** waterproofing.
3. For inside corner areas, apply a 3/4 inch cant bead of <06> **Siplast PS-715 NS Elastomeric Sealant** or a compatible approved sealant.
4. Refer to *Detail 06.10 Post-Applied - Application Overview* for treating inside and outside angle transitions.
5. Using a brush or roller, apply a 60 mil layer of <81> **TeraPROOF STP Liquid Membrane** waterproofing on vertical wall areas and horizontal footing surfaces. Allow the membrane to cure before installing <70> **Siplast TeraPROOF 10-11 Drainage Mat**.
Optional: If a reinforced membrane wall area is specified, immediately place the <71> **Siplast Pro Fleece** reinforcement fabric into the still-wet membrane. Apply a second coat of <81> **Siplast TeraPROOF STP Liquid Membrane** 60 mils (1.5 mm) thick over the reinforcement fabric extending a minimum of 1/4 inch (6 mm) beyond the reinforcement fabric.
6. Install the <72> **Siplast TeraPROOF Protection CS1000** with the fleece facing the membrane and <70> **Siplast TeraPROOF 10-11 Drainage Mat** with the filter fabric facing outward using backfill to hold in place or using an adhesive such as <05> **Siplast WALLcontrol Modified Silicone (STPE) VP Liquid Flashing**. Lap the fabric selvage edge onto the subsequent courses of the drainage board and top edges.
7. Install <23> **Continuous Insulation** using backfill to hold in place or an adhesive such as <05> **Siplast WALLcontrol Modified Silicone (STPE) VP Liquid Flashing**. If using adhesive:
 - a. Apply adhesive 3/4 inch thick by 3 inch diameter pads to the back of the <23> **Continuous Insulation**. Space adhesive pads evenly across the length of the insulation board in rows no more than 16 inches on center and no more than 3 inches from ends and edges of the insulation.
 - b. Immediately place <23> **Continuous Insulation** against the <70> **Siplast TeraPROOF 10-11 Drainage Mat** before adhesive "skins". If adhesive "skins," remove and apply fresh adhesive material.



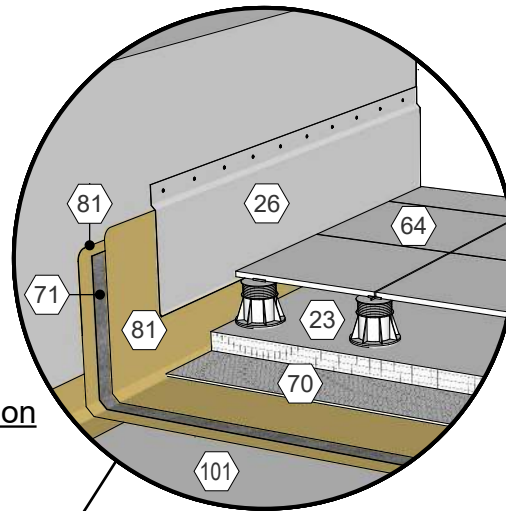


Keynote Reference Summary

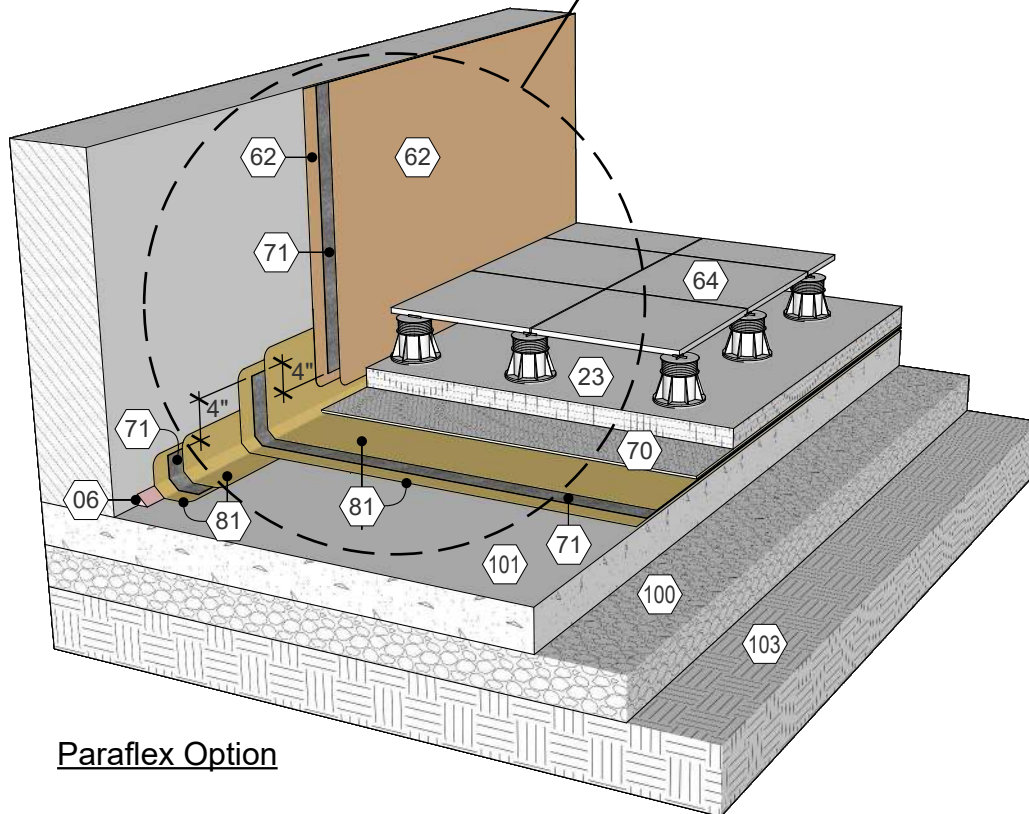
- <02> Siplast WALLcontrol Reinforced Aluminum Butyl Adhered AWB
- <03> Siplast WALLcontrol Reinforced Aluminum Butyl Adhered Flashing
- <04> Siplast WALLcontrol Modified Silicone (STPE) VP Liquid AWB
- <06> Siplast PS-715 NS Elastomeric Sealant
- <07> Siplast WALLcontrol Monolith VP Adhered AWB
- <25> Termination bar
- <26> Metal Counter Flashing
- <70> Siplast TeraPROOF 10-11 Drainage Mat
- <72> Siplast TeraPROOF Protection CS1000
- <81> Siplast TeraPROOF STP Liquid Membrane
- <100> #57 stone
- <101> Concrete Structure
- <103> Grade

Refer to TeraPROOF Installer's Guide for detailed instructions regarding the specific products, personal protection, storage, handling, relevant codes, installation tools, substrate preparation, and general application guidelines. Coordinate installation of Siplast TeraPROOF products with the adjoining and subsequent trades to ensure compatibility and continuity with the roofing, waterproofing, and above-grade facade systems.

1. Follow detail 06.11 Post-Applied Liquid - Foundation for installation of <81> **TeraPROOF STP Liquid Membrane** and <70> **Siplast TeraPROOF 10-11 Drainage Mat**.
2. Install a minimum 6 inch wide piece of <03> **Siplast WALLcontrol Reinforced Aluminum Butyl Adhered Flashing** as a transition between the <81> **TeraPROOF STP Liquid Membrane** and the <02> or <04> , or <07> **AWB Membrane**, overlapping the waterproofing and the AWB a minimum of 2 inches.
3. Install a termination bar with fasteners below the top edge of the <70> **Siplast TeraPROOF 10-11 Drainage Mat**. Ensure the termination bar terminates above the final <103> **Grade**. For areas that will experience extended UV exposure, cover the <81> **Siplast TeraPROOF STP Liquid Membrane** with a <26> **Metal Counter Flashing**. Ensure the metal flashing area extends 4 inches beyond the permanent UV exposure area of the membrane below. Apply a bead of <06> **Siplast PS-715 NS Elastomeric Sealant** along the top edge of the <26> **Metal Counter Flashing**.



Metal Counterflashing Option



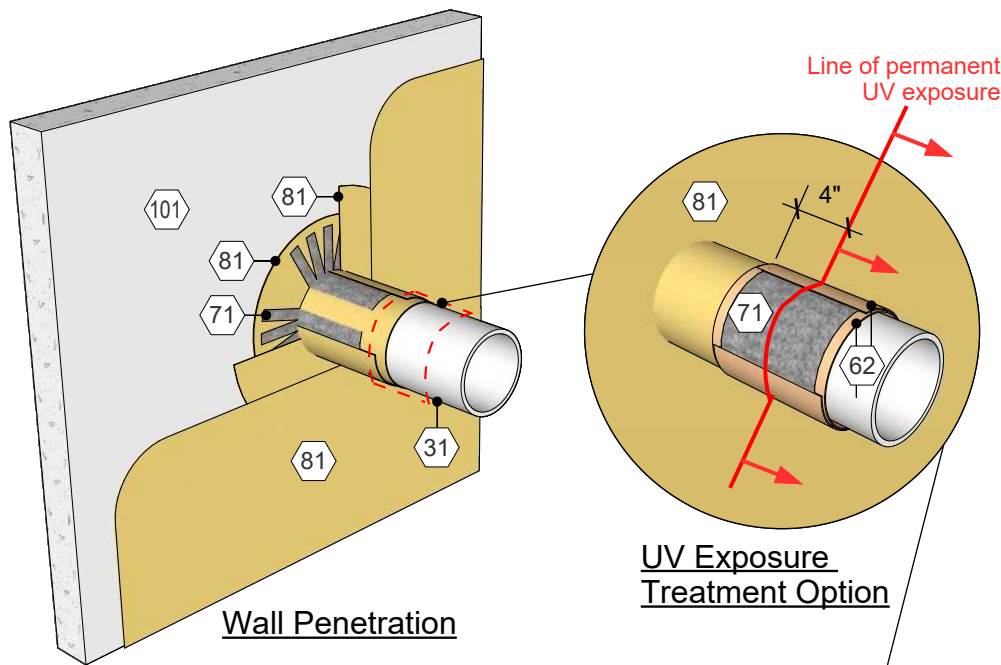
Paraflex Option

Keynote Reference Summary

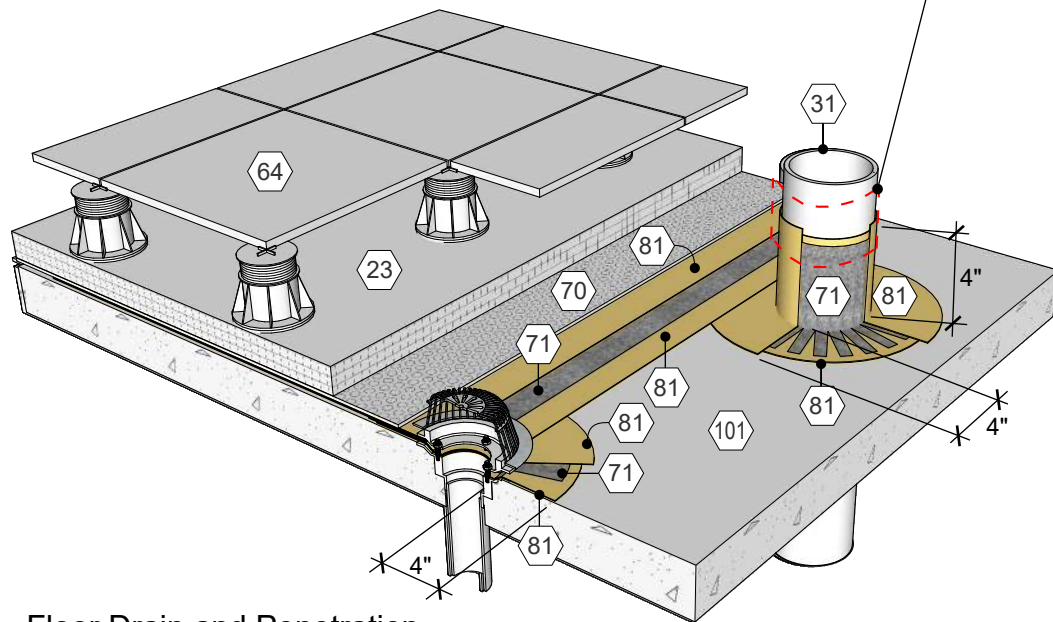
- <6> Siplast PS-715 NS Elastomeric Sealant
- <23> Insulation
- <26> Metal Counter Flashing
- <62> Siplast Paraflex System
- <64> Roof or Waterproofing Overburden
- <70> Siplast TeraPROOF 10-11 Drainage Mat or Siplast Paradrain Mat
- <71> Siplast Pro Fleece
- <81> Siplast TeraPROOF STP Liquid Membrane
- <100> #57 stone
- <101> Concrete Structure
- <103> Sub Grade

Refer to TeraPROOF Installer's Guide for detailed instructions regarding the specific products, personal protection, storage, handling, relevant codes, installation tools, substrate preparation, and general application guidelines. Coordinate installation of Siplast TeraPROOF products with the adjoining and subsequent trades to ensure compatibility and continuity with the roofing, waterproofing, and above-grade facade systems.

1. Refer to *Detail 06.10 Post-Applied - Application Overview* for treating inside and outside angle transitions.
2. Apply a first coat of 60 mils (1.5 mm) of <81> **TeraPROOF STP Liquid Membrane** using a brush or roller. Ensure the membrane extends up the vertical surface a minimum of 4 inches beyond the reinforced corner flashing.
3. Immediately place the <71> **Siplast Pro Fleece** reinforcement fabric into the still wet <81> **TeraPROOF STP Liquid Membrane**. Work the reinforcement fabric into the <81> **TeraPROOF STP Liquid Membrane** to prevent wrinkles. Ensure that the <71> **Siplast Pro Fleece** reinforcement fabric is adequately saturated and free of "dry" reinforcement, voids, air pockets, and wrinkles using recommended tools. Cut the reinforcing fabric to conform to conditions so that the <81> **TeraPROOF STP Liquid Membrane** is fully reinforced and overlapped at cuts, side-laps and end-laps.
4. Apply a second coat of <81> **Siplast TeraPROOF STP Liquid Membrane** 60 mils (1.5 mm) thick over the <71> **Siplast Pro Fleece** reinforcement fabric extending a minimum of 1/4 inch (6 mm) beyond the reinforcement fabric.
- 5a. *UV Exposed Paraflex Option:* For areas that will experience extended UV exposure, apply <62> **Siplast Paraflex Systems** to the vertical wall. Ensure the Paraflex application area extends 4 inches beyond the permanent UV exposure area. Ensure it overlaps the <81> **Siplast TeraPROOF STP Liquid Membrane** a minimum of 4 inches. All additional requirements in the Siplast Paraflex System Installer's Guide must also be followed.
- 5b. *Metal Counterflashing Option:* For areas that will experience extended UV exposure, cover the <81> **Siplast TeraPROOF STP Liquid Membrane** with a <26> **Metal Counter Flashing**. Ensure the metal flashing area extends 4 inches beyond the permanent UV exposure area of the membrane below. Seal fastener penetrations additional <81> **Siplast TeraPROOF STP Liquid Membrane**.
6. Install subsequent coats of <81> **Siplast TeraPROOF STP Liquid Membrane** or <62> **Siplast Paraflex Systems** within 72 hours of the initial application. For additional coats and at tie-ins, ensure the surface is clean and free of foreign materials that may interfere with adhesion.
7. Install the finish over the membrane per the design requirements, including the <70> **Siplast TeraPROOF Drainage Mat**, <23> **Insulation**, and the specified <64> **Roof or Waterproofing Overburden**.



Wall Penetration



Floor Drain and Penetration

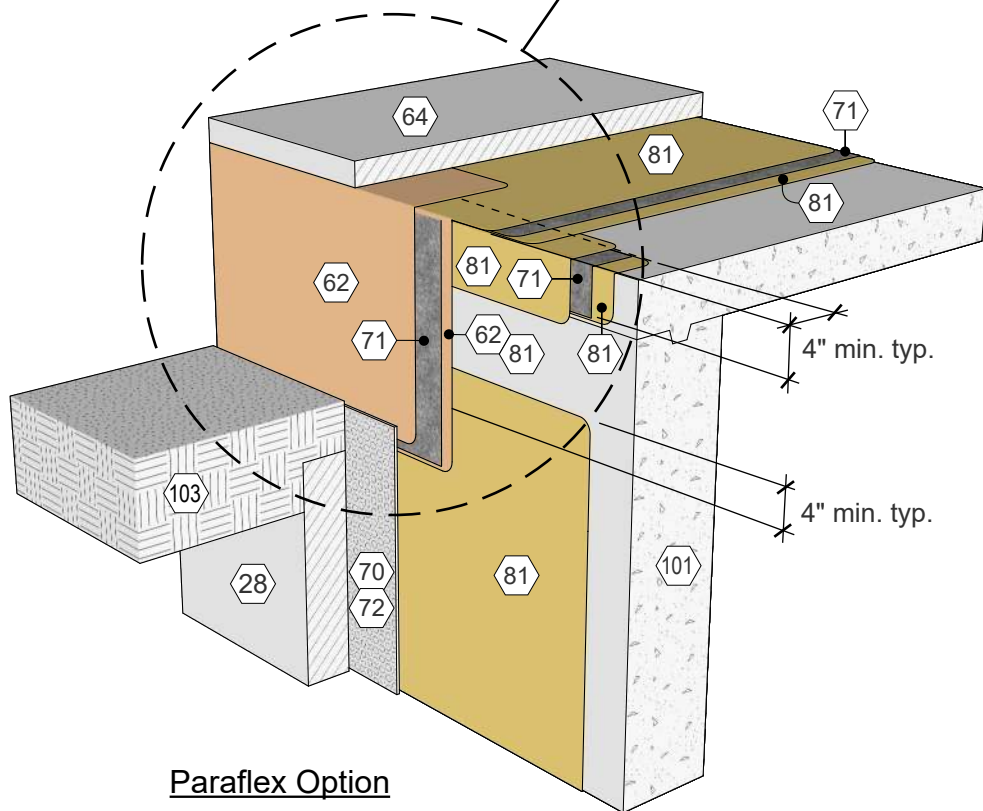
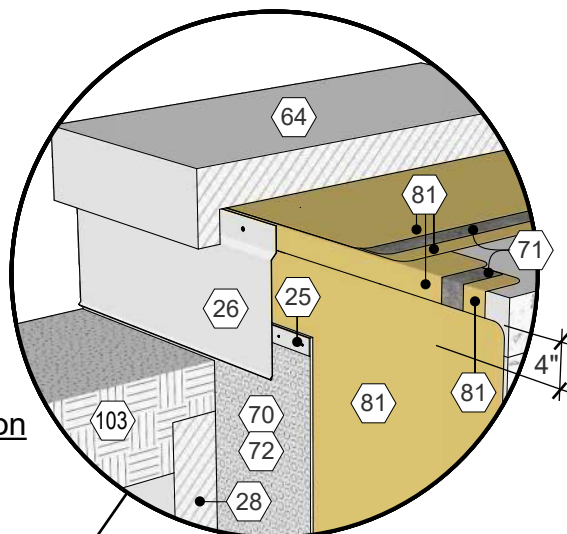
Keynote Reference Summary

- <06> Siplast PS-715 NS Elastomeric Sealant
- <23> Insulation
- <31> Pipe or penetration
- <62> Siplast Paraflex Liquid Membrane
- <64> Waterproofing Overburden
- <70> Siplast TeraPROOF 10-11 Drainage Mat or Siplast Paradrain Mat
- <71> Siplast Pro Fleece
- <81> Siplast TeraPROOF STP Liquid Membrane
- <101> Concrete Structure

Refer to TeraPROOF Installer's Guide for detailed instructions regarding the specific products, personal protection, storage, handling, relevant codes, installation tools, substrate preparation, and general application guidelines. Coordinate installation of Siplast TeraPROOF products with the adjoining and subsequent trades to ensure compatibility and continuity with the roofing, waterproofing, and above-grade facade systems.

1. Ensure <31> pipes, drains, equipment, etc. to be flashed are clean, prepared, and secured to prevent movement, and gaps and joints between substrates are sealed using <06> **Siplast PS-715 NS Elastomeric Sealant** or a compatible approved sealant before applying the TeraPROOF materials.
2. Before applying the <81> **TeraPROOF STP Liquid Membrane**, pre-cut the <71> **Siplast Pro Fleece** reinforcement fabric to conform to flashings. Cut reinforcing to ensure the <81> **TeraPROOF STP Liquid Membrane** is fully reinforced and overlapped at finger-cuts, side-laps, and end-laps to eliminate skips or breaks in the reinforcement.
3. For reinforced flashings at pipe penetrations, apply a first coat of 60 mils (1.5 mm) of <81> **TeraPROOF STP Liquid Membrane** to a minimum of 4 inches (100 mm) on the penetration and a minimum of 4 inches (100 mm) beyond the penetration onto the substrate.
4. Immediately place the <71> **Siplast Pro Fleece** reinforcement fabric into the still wet <81> **TeraPROOF STP Liquid Membrane**. The reinforcement fabric should cover a minimum of 4 inches (100 mm) on the pipe penetration and a minimum of 4 inches (100 mm) beyond the penetration. Work the reinforcement fabric into the <81> **TeraPROOF STP Liquid Membrane** to prevent wrinkles. Ensure that the <71> **Siplast Pro Fleece** reinforcement fabric is adequately saturated and free of "dry" reinforcement, voids, air pockets, and wrinkles using recommended tools.
5. Apply a second coat of <81> **Siplast TeraPROOF STP Liquid Membrane** 60 mils (1.5 mm) thick over the <71> **Siplast Pro Fleece** reinforcement fabric extending a minimum of 1/4 inch (6 mm) beyond the reinforcement fabric.
6. Refer to Detail 06.13 Post-Applied Liquid - Protected Horizontal Waterproofing for the installation of the area surrounding the penetration with <81> **TeraPROOF STP Liquid Membrane**, <71> **Siplast Pro Fleece**, <70> **Siplast TeraPROOF 10-11 Drainage Mat**, and/or <64> **Waterproofing Overburden**.

Metal Counterflashing Option



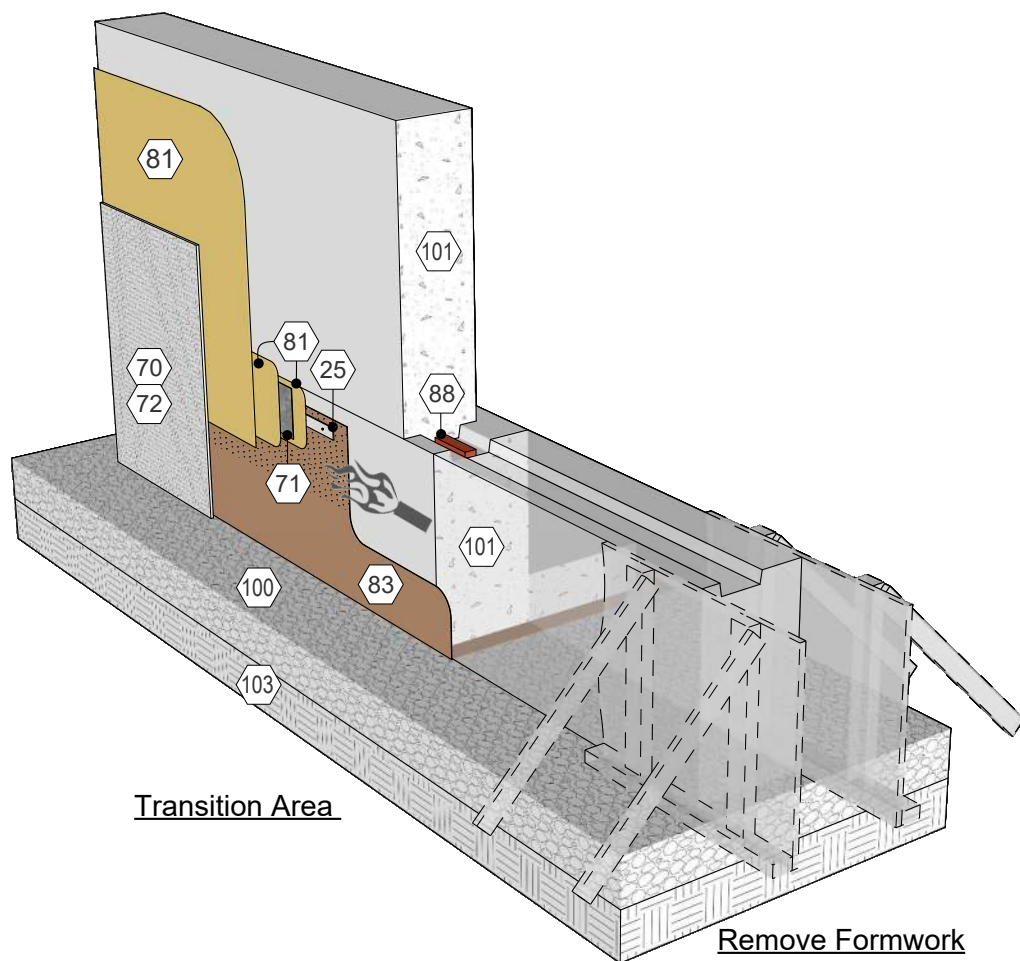
Paraflex Option

Keynote Reference Summary

- <25> Termination bar
- <26> Metal Counter Flashing
- <28> Soil Retention System
- <64> Waterproofing Overburden
- <62> Siplast Paraflex
- <70> Siplast TeraPROOF 10-11 Drainage Mat
- <71> Siplast Pro Fleece
- <72> Siplast TeraPROOF Protection CS1000
- <81> Siplast TeraPROOF STP Liquid Membrane
- <101> Concrete Structure
- <103> Sub Grade

Refer to TeraPROOF Installer's Guide for detailed instructions regarding the specific products, personal protection, storage, handling, relevant codes, installation tools, substrate preparation, and general application guidelines. Coordinate installation of Siplast TeraPROOF products with the adjoining and subsequent trades to ensure compatibility and continuity with the roofing, waterproofing, and above-grade facade systems.

1. For the vertical wall areas, follow detail 06.11 *Post-Applied Liquid - Foundation* and detail 06.12 *Post-Applied Liquid - Termination at Grade*, and for horizontal applications follow detail 06.13 *Post-Applied Liquid - Protected Horizontal Waterproofing*. Follow the referenced details and installer's guide for the applications of <81> **Siplast TeraPROOF STP Liquid Membrane**, <71> **Siplast Pro Fleece**, and <70> **Siplast TeraPROOF 10-11 Drainage Mat** and <72> **Siplast TeraPROOF Protection CS1000**.
2. At the corner transition from vertical to horizontal, apply a first coat of 60 mils (1.5 mm) of <81> **Siplast TeraPROOF STP Liquid Membrane** at the corner area, extending in at least 4 inches in both directions from the corner. Immediately place the <71> **Siplast Pro Fleece** reinforcement fabric into the still-wet membrane. Apply a second coat of <81> **Siplast TeraPROOF STP Liquid Membrane** 60 mils (1.5 mm) thick over the reinforcement fabric extending a minimum of 1/4 inch (6 mm) beyond the reinforcement fabric.
- 3a. UV Exposed Paraflex Option: For areas that will experience extended UV exposure, apply <62> **Siplast Paraflex Systems** to the vertical wall. Ensure the Paraflex application area extends 4 inches beyond the permanent UV exposure area. Ensure the Paraflex overlaps the <81> **Siplast TeraPROOF STP Liquid Membrane** a minimum of 4 inches. All additional requirements in the Siplast Paraflex System Installer's Guide must also be followed.
- 3b. *Metal Counterflashing Option*: For areas that will experience extended UV exposure, cover the <81> **Siplast TeraPROOF STP Liquid Membrane** with a <26> **Metal Counter Flashing**. Ensure the metal flashing area extends 4 inches beyond the permanent UV exposure area of the membrane below. Seal fastener penetrations additional <81> **Siplast TeraPROOF STP Liquid Membrane**.
4. Install subsequent coats of <81> **Siplast TeraPROOF STP Liquid Membrane** or <62> **Siplast Paraflex Systems** within 72 hours of the initial application. For additional coats and at tie-ins, ensure the surface is clean and free of foreign materials that may interfere with adhesion.



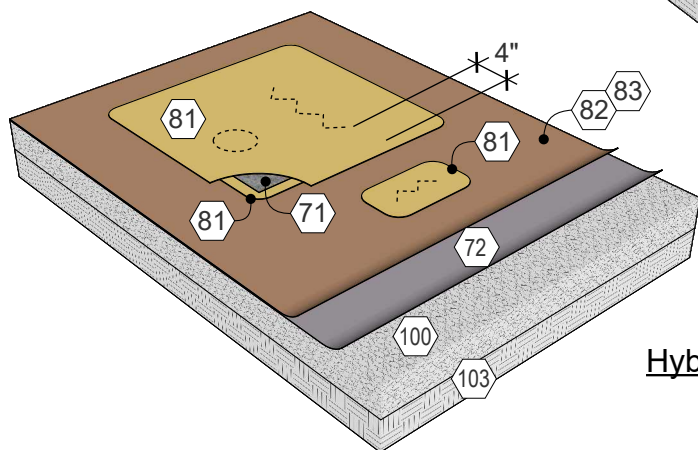
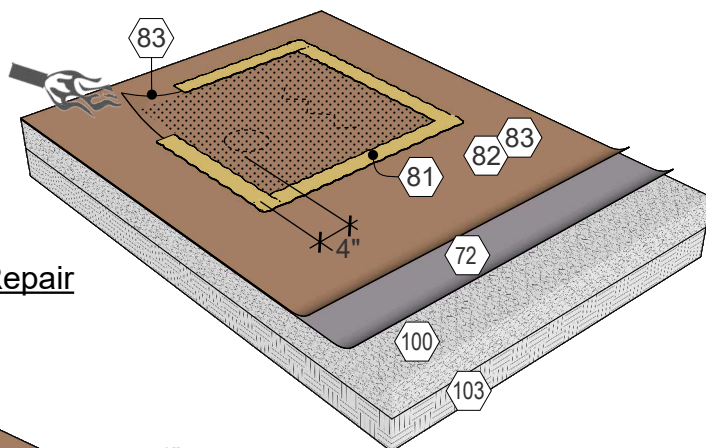
Keynote Reference Summary

- <25> Termination bar
- <70> Siplast TeraPROOF 10-11 Drainage Mat or Siplast Paradrain Mat
- <71> Siplast Pro Fleece
- <72> Siplast TeraPROOF Protection CS1000
- <81> Siplast TeraPROOF STP Liquid Membrane
- <83> Siplast TeraPROOF Pre-Applied H-SBS Membrane
- <88> Concrete Waterstop
- <100> #57 stone
- <101> Concrete Structure
- <103> Sub grade

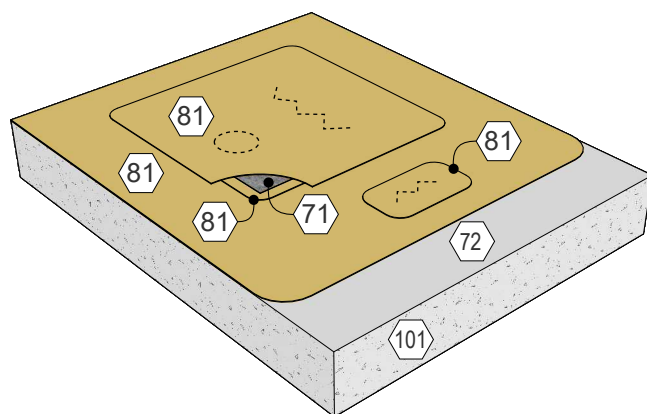
Refer to TeraPROOF Installer's Guide for detailed instructions regarding the specific products, personal protection, storage, handling, relevant codes, installation tools, substrate preparation, and general application guidelines. Coordinate installation of Siplast TeraPROOF products with the adjoining and subsequent trades to ensure compatibility and continuity with the roofing, waterproofing, and above-grade facade systems.

1. Remove formwork at the end of the pre-applied waterproofing building area, and trim back installed <83> **Siplast TeraPROOF Pre-Applied H-SBS Membrane** to extend the vertically a minimum of 18 inches (450 mm) onto the concrete wall surface and secure with a <25> **termination bar**.
2. The <83> **Siplast TeraPROOF Pre-Applied H-SBS Membrane** surface film must be melted, burned-off, and tempered a minimum of 4.5 inches below the <25> **termination bar**.
3. Before applying the <81> **TeraPROOF STP Liquid Membrane**, pre-cut the <71> **Siplast Pro Fleece** reinforcement fabric to conform to flashings. Cut reinforcing to ensure the <81> **TeraPROOF STP Liquid Membrane** is fully reinforced and overlapped at finger-cuts, side-laps, and end-laps to eliminate skips or breaks in the reinforcement.
4. Apply 60 mils (1.5 mm) of <81> **TeraPROOF STP Liquid Membrane** a minimum of 4 inches (100mm) beyond each side of the termination bar.
5. Immediately place the <71> **Siplast Pro Fleece** reinforcement fabric into the still wet <81> **TeraPROOF STP Liquid Membrane**. The reinforcing fabric should cover a minimum of 4 inches (100 mm) beyond each side of the termination bar. Work the fleece into the liquid membrane to prevent wrinkles. Ensure the reinforcement fabric is adequately saturated and free of dry reinforcement, voids, air pockets, and wrinkles using recommended tools.
6. Apply a second coat of <81> **Siplast TeraPROOF STP Liquid Membrane** at 60 mils (1.5 mm) thick over the <71> **Siplast Pro Fleece** reinforcement fabric extending a minimum of 1/4 inch (6 mm) beyond the reinforcement fabric.
7. For the vertical wall areas, follow detail 06.11 *Post-Applied Liquid - Foundation*, follow the referenced details and installer's guide for the applications of <81> **Siplast TeraPROOF STP Liquid Membrane**, <71> **Siplast Pro Fleece**, and <70> **Siplast TeraPROOF 10-11 Drainage Mat**.

Sheet Membrane Repair



Hybrid Membrane Repair



Liquid Membrane Repair

Keynote Reference Summary

- <71> Siplast Pro Fleece
- <72> Siplast TeraPROOF Protection CS1000
- <81> Siplast TeraPROOF STP Liquid Membrane
- <82> Siplast TeraPROOF Pre-Applied V-SBS Membrane
- <83> Siplast TeraPROOF Pre-Applied H-SBS Membrane
- <100> #57 stone
- <101> Concrete Structure
- <103> Sub Grade

Refer to TeraPROOF Installer's Guide for detailed instructions regarding the specific products, personal protection, storage, handling, relevant codes, installation tools, substrate preparation, and general application guidelines. Coordinate installation of Siplast TeraPROOF products with the adjoining and subsequent trades to ensure compatibility and continuity with the roofing, waterproofing, and above-grade facade systems.

1. Ensure the area surrounding the damage is installed following Detail 07.10 Pre-Applied SBS - Application Overview including the following materials: <72> **Siplast TeraPROOF Protection CS1000**, <100> **#57 stone**, <101> **structural concrete**, and <103> **Sub-grade**.

Liquid Patch Option

1. Before applying the <81> **TeraPROOF STP Liquid Membrane**, pre-cut the <71> **Siplast Pro Fleece** reinforcement fabric to conform to flashings. Cut the reinforcement fabric to ensure the <81> **TeraPROOF STP Liquid Membrane** is fully reinforced and overlapped at cuts, side-laps, and end-laps to eliminate skips or breaks in the reinforcement.
2. Apply 60 mils (1.5 mm) of <81> **Siplast TeraPROOF STP Liquid Membrane** to damaged areas, pinholes, or test cut areas on the <82> **Siplast TeraPROOF Pre-Applied V-SBS Membrane**, <83> **Siplast TeraPROOF Pre-Applied H-SBS Membrane**, or <81> **TeraPROOF STP Liquid Membrane** and ensure the application extends a minimum of 4 inches (100 mm) beyond the affected area.
3. Immediately place a piece of <71> **Siplast Pro Fleece** reinforcement fabric into the still wet <81> **TeraPROOF STP Liquid Membrane**. Work the reinforcement fabric into the <81> **TeraPROOF STP Liquid Membrane** to prevent wrinkles. Ensure that the <71> **Siplast Pro Fleece** reinforcement fabric is adequately saturated and free of dry/unsaturated reinforcement fabric, voids, air pockets, and wrinkles using recommended tools.
4. Apply a second coat of <81> **Siplast TeraPROOF STP Liquid Membrane** 60 mils (1.5 mm) thick over the <71> **Siplast Pro Fleece** reinforcement fabric extending a minimum of 1/4 inch (6 mm) beyond the reinforcement fabric.

Membrane Patch Option

1. The membrane patch option is only recommended for repairs to the <82> **Siplast TeraPROOF Pre-Applied V-SBS Membrane** or <83> **Siplast TeraPROOF Pre-Applied H-SBS Membrane**. Heat weld a piece of <83> **Siplast TeraPROOF Pre-Applied H-SBS Membrane** to any damaged areas or test cut areas and ensure it extends a minimum of 4 inches (100 mm) beyond the affected area.
2. Treat perimeter edges of the <83> **Siplast TeraPROOF Pre-Applied H-SBS Membrane** with <81> **Siplast TeraPROOF STP Liquid Membrane** and tool across the edges using a brush or trowel to a minimum thickness of 60 mils (1.5 mm) wet, extending a minimum of 1/4 inch (6 mm) beyond the repaired area.