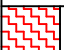
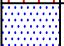
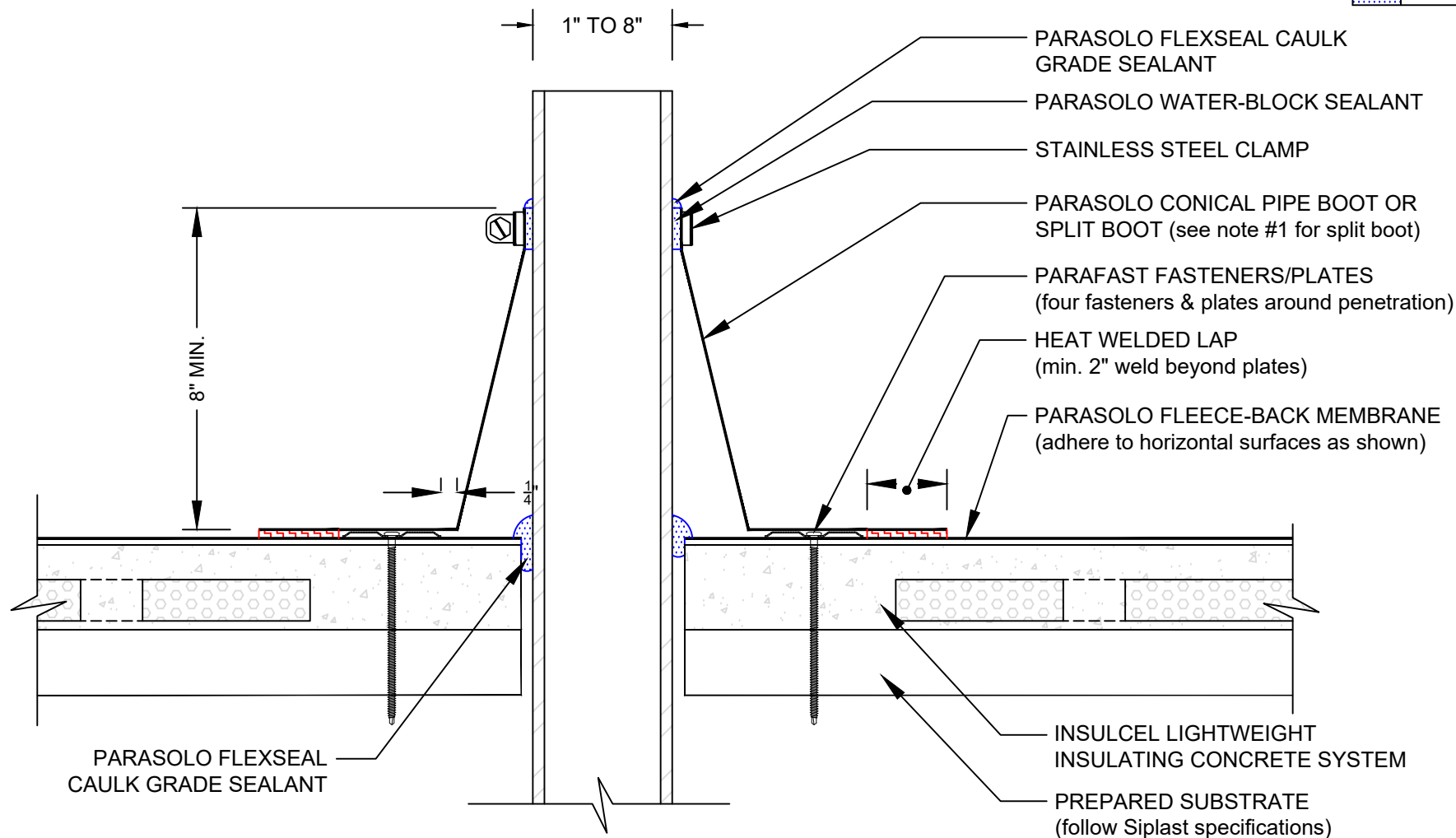


WASTE STACK/PIPE PENETRATION WITH PARASOLO FLASHING

PARASOLO FLEECE BACK MEMBRANE - INSULCEL LIGHTWEIGHT INSULATING CONCRETE

LEGEND	
	HEAT WELD
	SEALANT



NOTES:

1. IF PLATES AND FASTENERS ENCROACH INTO THE SEAM AREA OF THE POCKET, A TARGET MUST BE ADDED FIRST TO COVER FASTENERS.
2. REQUIREMENTS AND RECOMMENDATIONS DETAILED IN CURRENT SIPLAST SPECIFICATIONS SHALL APPLY IN ADDITION TO THE ABOVE DRAWING.

Scale: NTS

REF: WASTE STACK/PIPE PENETRATION - PARASOLO - INSULCEL

Detail Number:
DE-6821



14911 Quorum Drive, Suite 600 - Dallas, Texas - 75254 (800) 922-8800

www.siplast.com

Rev: 06.15.2023