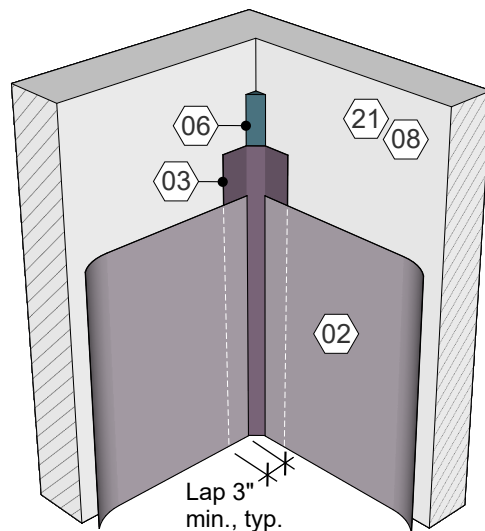
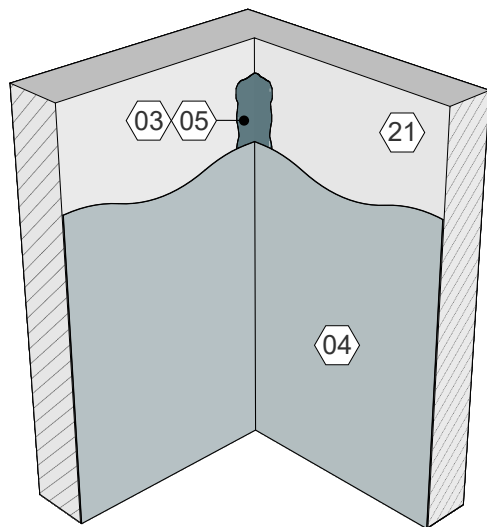


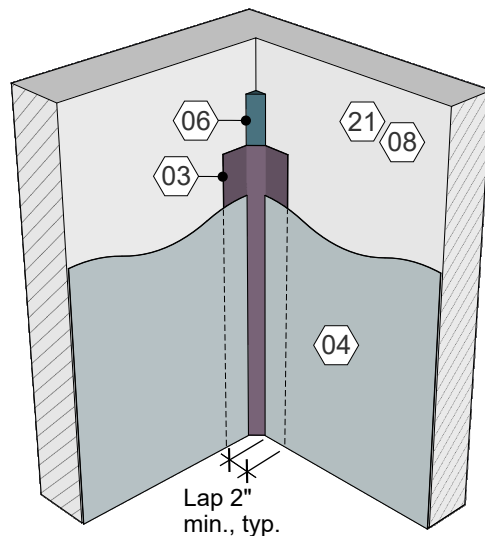
1 Inside Corner,  
Continuous Adhered AWB



2 Inside Corner, Adhered  
AWB w/ Flashing Strip



3 Inside Corner,  
Continuous Liquid AWB



4 Inside Corner, Liquid  
AWB w/ Flashing Strip

## NOTES

Refer to WALLcontrol Installer's Guides for detailed instructions regarding the specific products, personal protection, storage, handling, relevant codes, installation tools, substrate preparation, and general application guidelines. Coordinate installation of Siplast WALLcontrol products with the roofing trade to ensure compatibility and continuity with the roofing, waterproofing, and facade systems.

### Inside Corner, Continuous Adhered AWB

1. Apply a fillet bead of (06) Siplast PS-715 NS Elastomeric Sealant to the inside corner joint.
2. While the sealant in the corner is still wet, apply (02) Siplast WALLcontrol Reinforced Aluminum Butyl Adhered AWB into the corner and extend past the joint a minimum of 3 inches.
3. The next piece of (02) Siplast WALLcontrol Reinforced Aluminum Butyl Adhered AWB must overlap the previous piece a minimum of 3 inches.

### Inside Corner, Adhered AWB with a Flashing Strip

1. Apply a fillet bead of (06) Siplast PS-715 NS Elastomeric Sealant to the inside corner joint.
2. Vertically at the corner, install at least a 6 inch wide piece of (03) Siplast WALLcontrol Reinforced Aluminum Butyl Adhered Flashing into the corner, extending at least 3 inches onto each face of the (21) substrate.
3. Apply (02) Siplast WALLcontrol Reinforced Aluminum Butyl Adhered AWB must overlap the previously installed (03) Siplast WALLcontrol Reinforced Aluminum Butyl Adhered Flashing a minimum of 3 inches on both sides of the corner.

### Inside Corner, Continuous Liquid AWB

1. Vertically at the corner, apply a bead of (05) Siplast WALLcontrol Modified Silicone (STPE) VP Liquid Flashing and tool across the corner using a brush or trowel to a minimum thickness of 60 mils wet, extending a minimum of 1 inch onto each substrate on either side of the corner.
2. Apply (04) Siplast WALLcontrol Modified Silicone (STPE) VP Liquid AWB to the substrate and completely cover the flashing materials in one 20 mil wet coating. Upon completion, inspect the membrane to ensure that it is continuous and free of voids and pinholes.

### Inside Corner, Liquid AWB with Flashing Strip

1. Apply a fillet bead of (06) Siplast PS-715 NS Elastomeric Sealant to the inside corner joint.
2. Vertically at the corner, install at least a 6 inch wide piece of (03) Siplast WALLcontrol Reinforced Aluminum Butyl Adhered Flashing around the corner, extending at least 3 inches onto each face of the (21) substrate.
3. Apply (04) Siplast WALLcontrol Modified Silicone (STPE) VP Liquid AWB to the substrate and lap over the flashing at least 2 inches in one 20 mil wet coating. Upon completion, inspect the membrane to ensure that it is continuous and free of voids and pinholes.

### General Notes:

1. The (21) substrate must be clean and dry and free from any condition that would be detrimental to the adhesion of the membrane. (08) Siplast Pro Primer AC is a water-based primer that imparts an aggressive, high-tack finish to improve adhesion to the substrate.
  2. Adhered materials must be firmly pressed onto the sheathing using a J-roller.
- Allow the (05) Siplast WALLcontrol Modified Silicone (STPE) VP Liquid Flashing to form a tack-free skin before applying (04) Siplast WALLcontrol Modified Silicone (STPE) VP Liquid AWB.