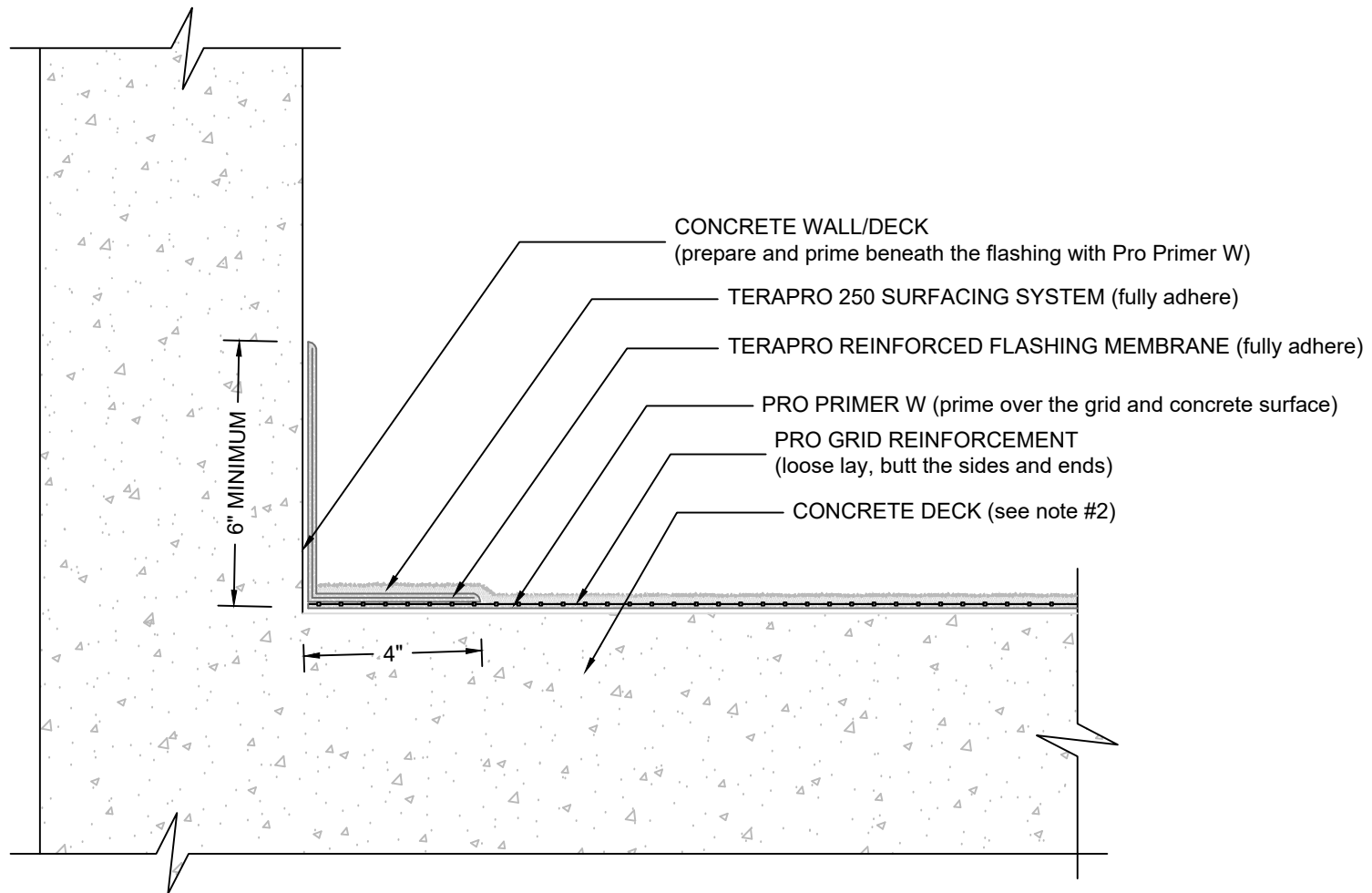


## WALL FLASHING (MONOLITHIC WALL/DECK)

### TERAPRO 250 SURFACING SYSTEM (PRO GRID REINFORCED) - CONCRETE SUBSTRATE



#### NOTES:

1. REFER TO SIPLAST PREPARATION GUIDELINES FOR PROPER SURFACE PREPARATION OF ALL SUBSTRATES PRIOR TO APPLICATION OF TERAPRO MATERIALS.
2. QUALIFY THE CONCRETE SUBSTRATE IN ACCORDANCE WITH SIPLAST SPECIFICATIONS AND MECHANICALLY PREPARE TO A CSP 2 TO CSP 4 PROFILE.
3. REQUIREMENTS AND RECOMMENDATIONS DETAILED IN TERAPRO SPECIFICATIONS SHALL APPLY IN ADDITION TO THE ABOVE DRAWING.

N.T.S