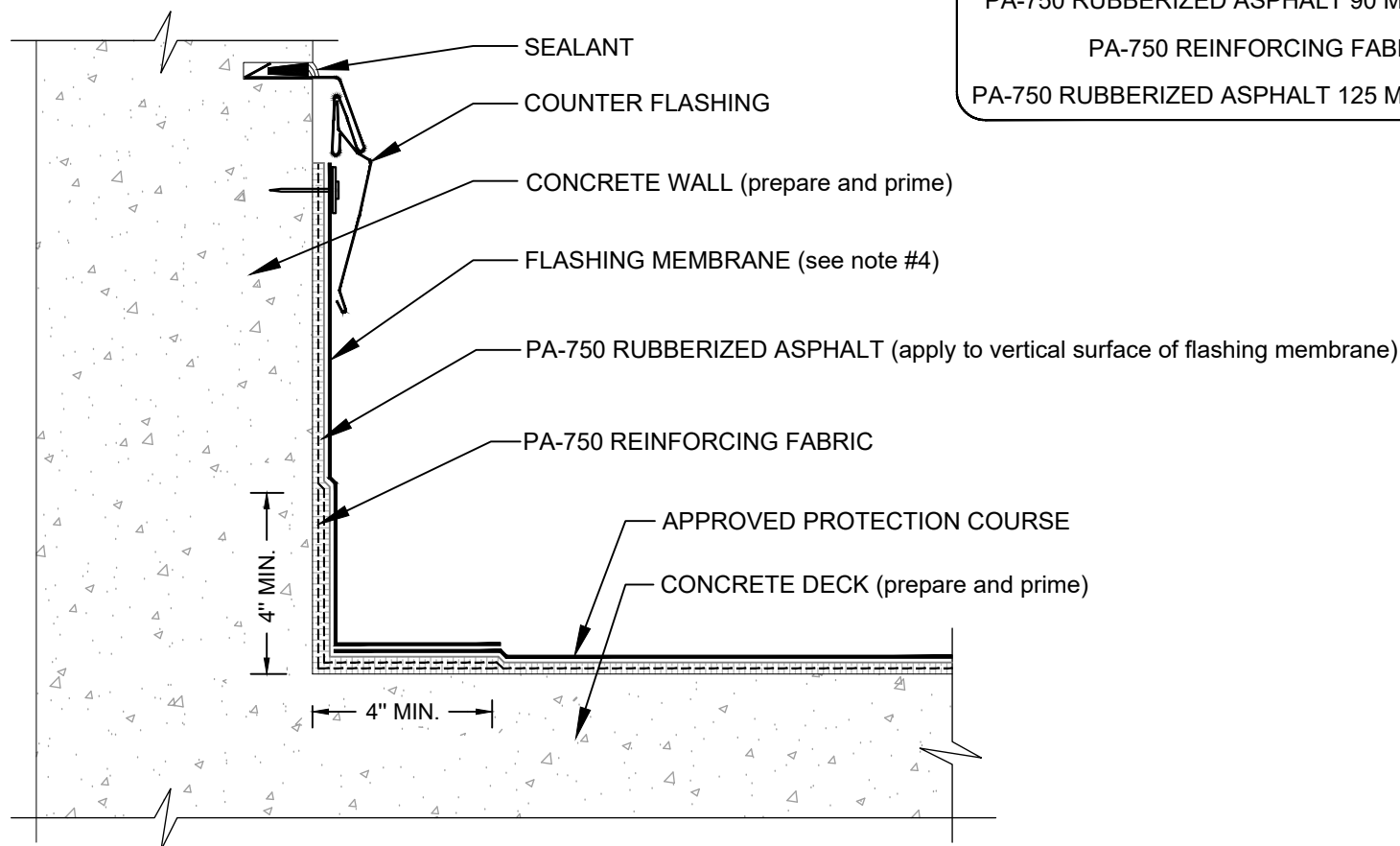


# WALL FLASHING (SBS MEMBRANE)

## PA-750 HOT RUBBERIZED ASPHALT - CONCRETE SUBSTRATE



### NOTES:

1. REQUIREMENTS AND RECOMMENDATIONS DETAILED IN PA-750 HOT APPLIED RUBBERIZED ASPHALT SYSTEM INSTALLER'S GUIDE SHALL APPLY IN ADDITION TO THE ABOVE DRAWING.
2. ONE OF THE FOLLOWING PRIMERS: PA-1125 OR PA-917 PRIMER IS REQUIRED WHERE PRIMER IS INDICATED. CONTACT SIPLAST FOR SPECIFIC REQUIREMENTS.
3. CONSULT PA-750 HOT APPLIED RUBBERIZED ASPHALT SYSTEM SPECIFICATION PLATES FOR OVERBURDEN/PROTECTION SYSTEM OPTIONS.
4. APPLY FLASHING MEMBRANE IN PA-750 RUBBERIZED ASPHALT TO PREPARED SURFACE AND FASTEN 9" ON CENTER.
5. CONSULT PA-750 HOT APPLIED RUBBERIZED ASPHALT SYSTEM SPECIFICATION PLATES FOR OVERBURDEN / PROTECTION SYSTEM OPTIONS.

Scale: NTS

REF: WALL FLASHING - PA-750 - CONCRETE



14911 Quorum Drive, Suite 600 - Dallas, Texas - 75254 (800) 922-8800

[www.siplast.com](http://www.siplast.com)

**Detail Number:**  
DE-HRA-40-05f

**Rev:** 01.22.2025