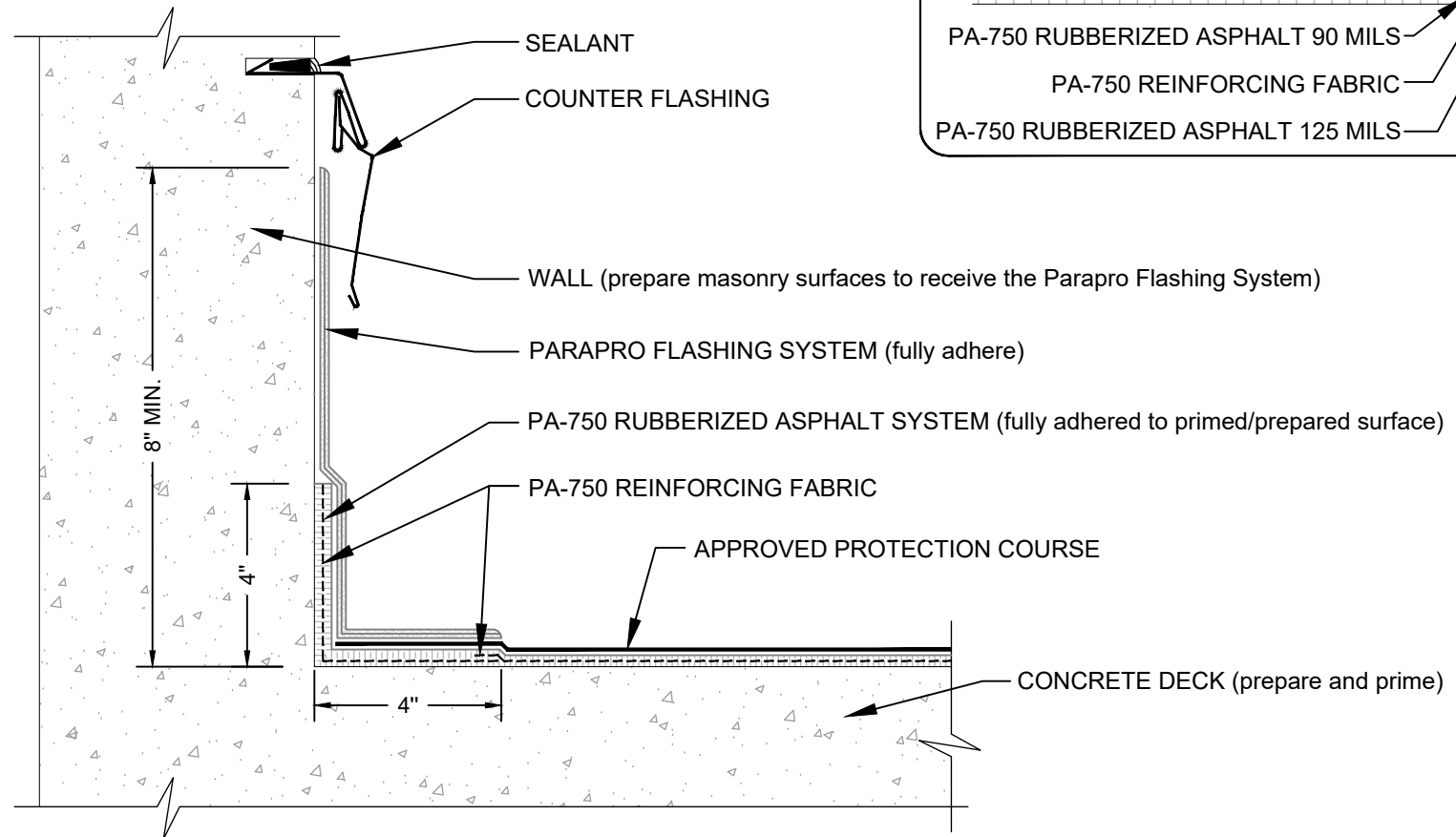


WALL FLASHING (PARAPRO FLASHING)

PA-750 HOT RUBBERIZED ASPHALT - CONCRETE SUBSTRATE



NOTES:

1. REFER TO SIPLAST PREPARATION GUIDELINES FOR PROPER SURFACE TREATMENT OF ALL MATERIALS PRIOR TO APPLICATION OF PARAPRO MATERIALS.
2. PARAPRO CANNOT BE APPLIED IN THE ABOVE CONFIGURATION OVER MEMBRANES OR OTHER MATERIALS CONTAINING UNCURED, SOLVENT-BASED ADHESIVES. CONTACT SIPLAST FOR FURTHER INFORMATION.
3. ONE OF THE FOLLOWING PRIMERS: PA-1125 OR PA-917 PRIMER IS REQUIRED WHERE PRIMER IS INDICATED. CONTACT SIPLAST FOR SPECIFIC REQUIREMENTS.
4. REFER TO SIPLAST FLEECE CUTTING RECOMMENDATIONS IN THE PARAPRO FLASHING SYSTEM INSTALLER'S GUIDE FOR CONFIGURATIONS, CUTTING, FOLDING, AND LAPPING TECHNIQUES.
5. REQUIREMENTS AND RECOMMENDATIONS DETAILED IN CURRENT SIPLAST SPECIFICATIONS, THE PA-750 HOT APPLIED RUBBERIZED ASPHALT SYSTEM INSTALLER'S GUIDE, AND THE PARAPRO FLASHING SYSTEM INSTALLER'S GUIDE SHALL APPLY IN ADDITION TO THE ABOVE DRAWING.
6. CONSULT PA-750 HOT APPLIED RUBBERIZED ASPHALT SYSTEM SPECIFICATION PLATES FOR OVERBURDEN / PROTECTION SYSTEM OPTIONS.

Scale: NTS

REF: WALL FLASHING - PA-750 - CONCRETE - PARAPRO



14911 Quorum Drive, Suite 600 - Dallas, Texas - 75254 (800) 922-8800

www.siplast.com

Detail Number:
DE-HRA-40-05g

Rev: 01.22.2025