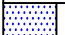
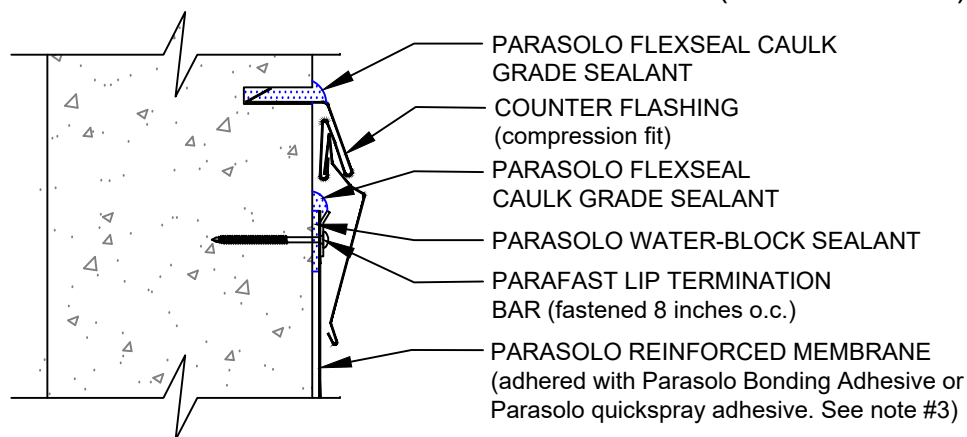


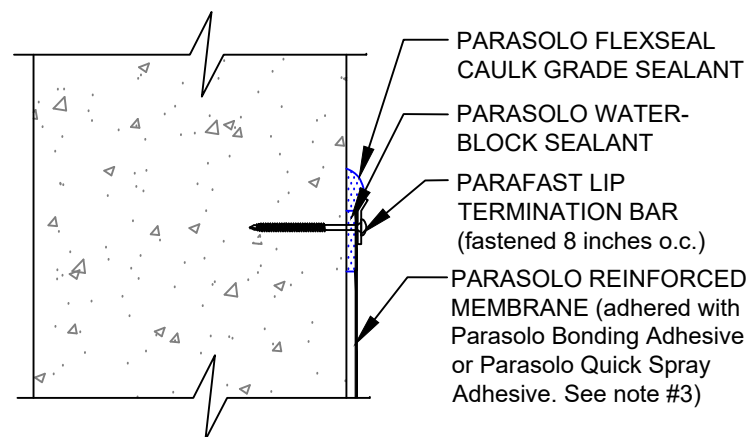
TERMINATION DETAILS 1-4

PARASOLO ROOF MEMBRANE - INSULATED (ALL SYSTEMS)

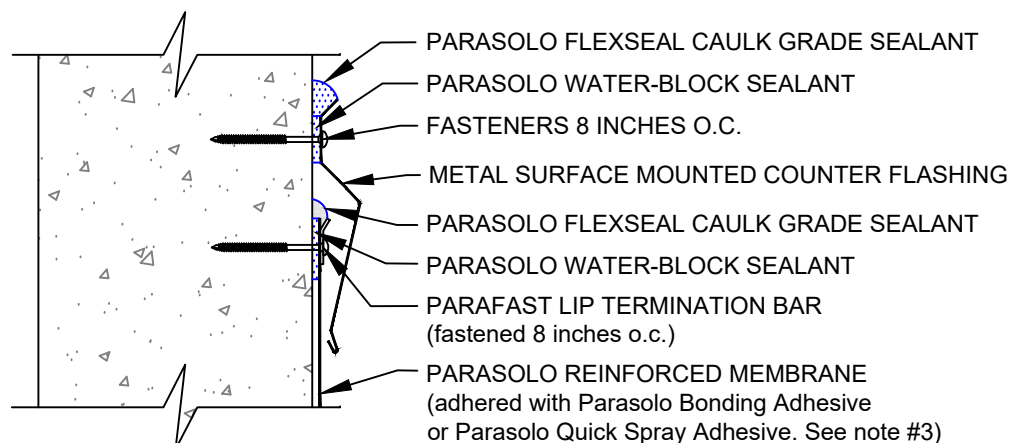
LEGEND
 SEALANT



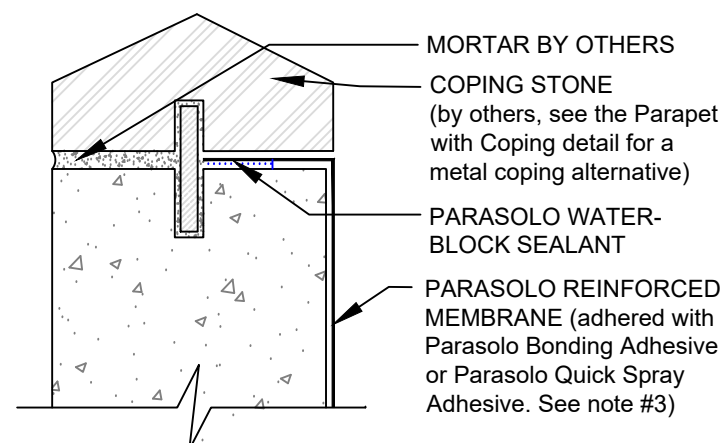
1. REGLET COUNTER FLASHING TERMINATION



3. MECHANICAL TERMINATION



2. SURFACE MOUNTED COUNTER FLASHING TERMINATION



4. COPING STONE TERMINATION

NOTES:

1. THE METAL WORK SHOWN DEPICTS SHOP FABRICATION AND JOB-SITE ASSEMBLY. THESE COMPONENTS SHOULD BE DESIGNED/FABRICATED/INSTALLED ACCORDING TO GENERALLY ACCEPTED INDUSTRY PRACTICES, STANDARDS, AND APPROVALS.
2. REQUIREMENTS AND RECOMMENDATIONS DETAILED IN CURRENT SIPLAST SPECIFICATIONS SHALL APPLY IN ADDITION TO THE ABOVE DRAWING.
3. PARASOLO BONDING ADHESIVE CAN BE USED UP TO A MAXIMUM FLASHING HEIGHT OF 54 INCHES. ADDITIONAL TERMINATION IS REQUIRED FOR FLASHING HEIGHTS ABOVE 54 INCHES WHEN PARASOLO BONDING ADHESIVE IS USED. CONTACT THE SIPLAST TECHNICAL DEPARTMENT FOR ADDITIONAL INFORMATION.

Scale: NTS

REF: TERMINATION DETAILS 1-4 - PARASOLO - INSULATED

Detail Number:
DE-6263



14911 Quorum Drive, Suite 600 - Dallas, Texas - 75254 (800) 922-8800

www.siplast.com

Rev: 06.08.2023