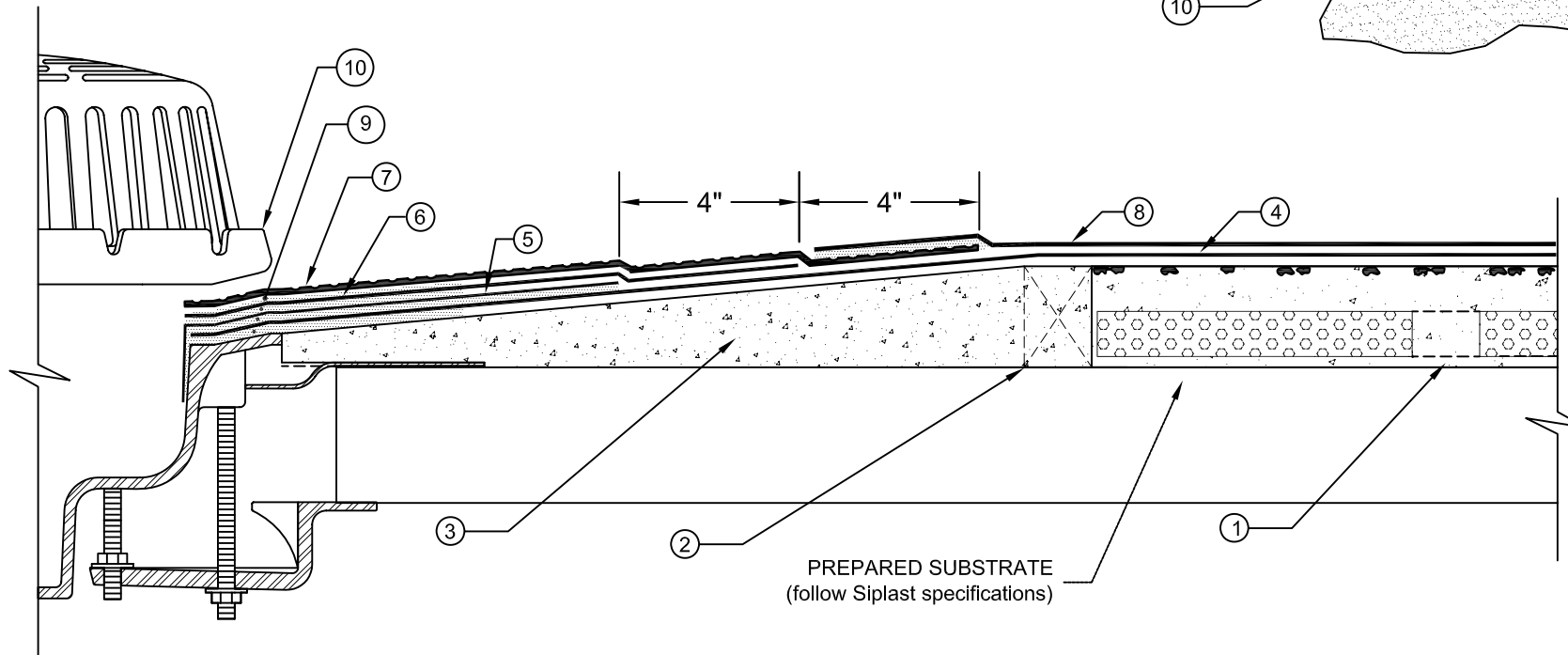
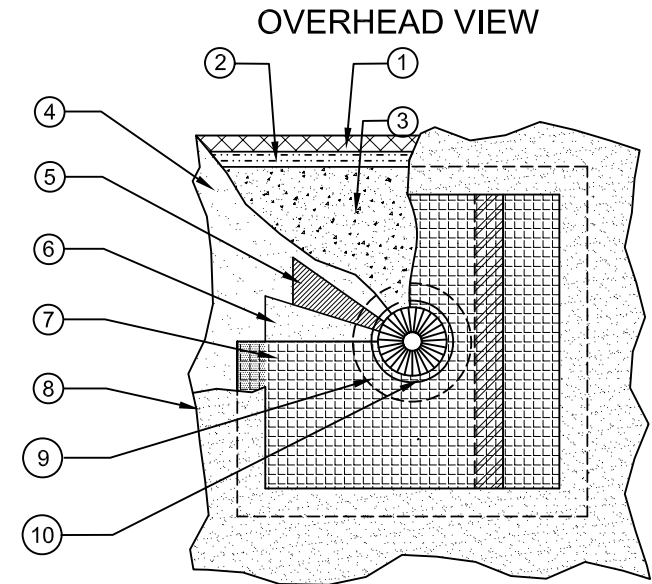


# SUMPED ROOF DRAIN

## PARADIENE 20TS/30 FR TG - INSULCEL RT

1. INSULCEL RT LIGHTWEIGHT INSULATING CONCRETE SYSTEM
2. TEMPORARY WOOD BLOCKING (use as a pour-stop for the INSULCEL System and remove prior to application of Zono-Patch)
3. ZONO-PATCH (apply in drain sump)
4. PARADIENE 20 TS (adhere to primed zono-patch)
5. LEAD FLASHING (4 lb., 30" X 30" - prime and set in mastic)
6. PARADIENE 20 TG (39" X 39" - adhere, extend 4" beyond lead)
7. VERAL (48" X 48" - torch apply, prime foil around edge min. 4 ")
8. PARADIENE 30 FR TG (torch apply, burn off polyolefin film and set in mastic over Veral sheet)
9. MASTIC (set Paradiene layers in mastic 6" around drain perimeter)
10. STRAINER AND CLAMPING RING



- NOTES: 1. WHERE PRIMER IS INDICATED TO MAINTAIN PROPER ADHESION, TA-119 PRIMER IS REQUIRED FOR ALL PARADIENE 20 SA FLASHING REINFORCING AND STRIPPING PLY APPLICATIONS. USE PA-1125 OR PA-917 LS FOR ALL NON-PARADIENE 20 SA APPLICATIONS. CONTACT SIPLAST FOR SPECIFIC REQUIREMENTS.
2. ROOF DRAIN COMPONENTS AND INSTALLATION GUIDELINES ARE SUPPLIED BY THE DRAIN MANUFACTURER.
3. VERAL MUST BE USED IN DRAIN SUMP APPLICATIONS. LAP VERAL OUTSIDE OF DRAIN BOWL AREA.
4. REQUIREMENTS AND RECOMMENDATIONS DETAILED IN SIPLAST SPECIFICATIONS SHALL APPLY IN ADDITION TO THE ABOVE DRAWING.

CAUTION: SIPLAST RECOMMENDS THAT ALL PRACTICES PERTAINING TO NRCA CERTA GUIDELINES BE FOLLOWED WHEN TORCHING METHODS ARE EMPLOYED. THIS INCLUDES PERFORMING A FIRE WATCH FOLLOWING ANY TORCH APPLICATIONS. ALWAYS HAVE APPROVED FIRE-EXTINGUISHING EQUIPMENT NEARBY.

N.T.S.