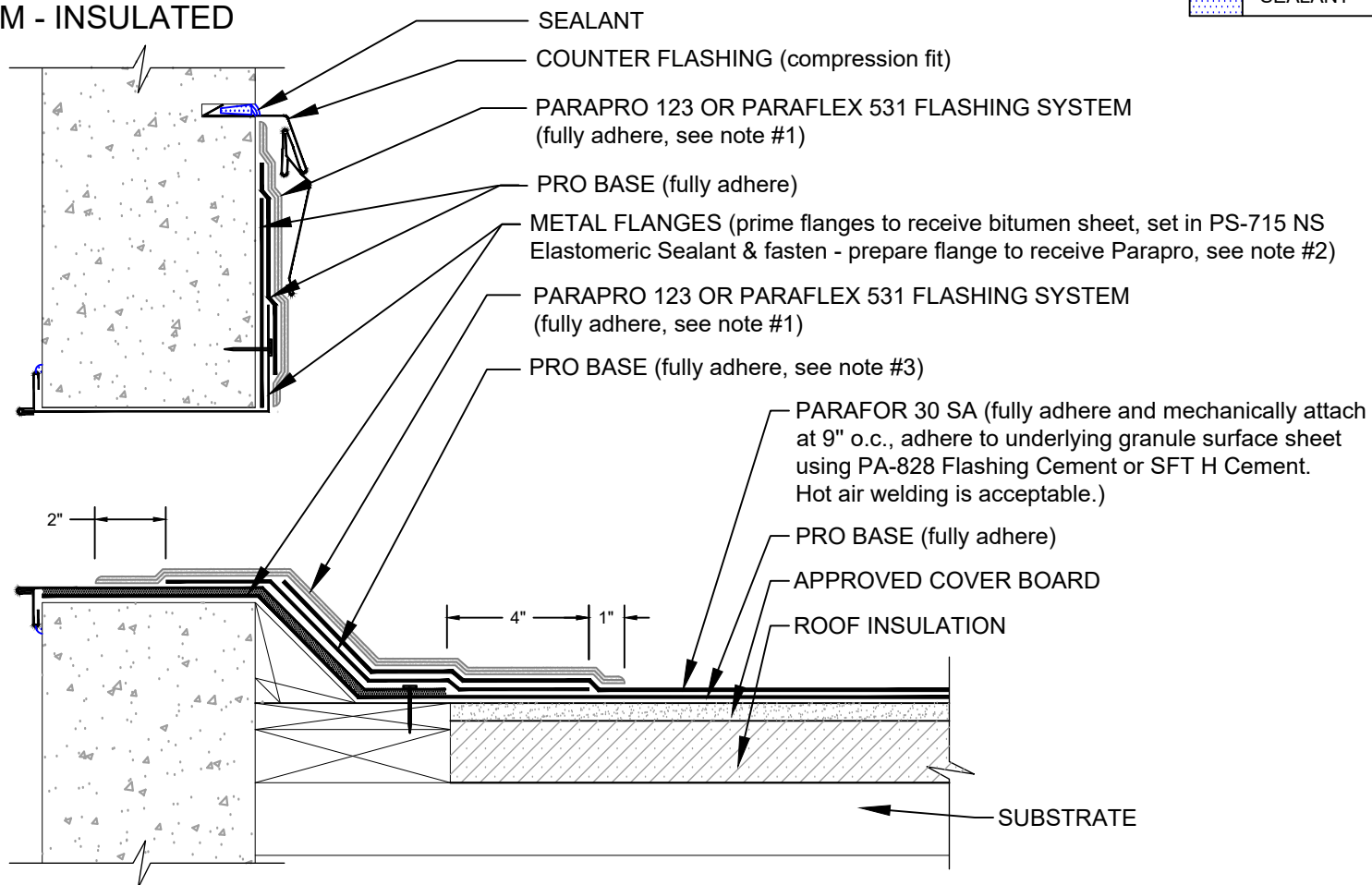


OVERFLOW SCUPPER WITH LIQUID APPLIED FLASHING

SBS SELF-ADHESIVE SYSTEM - INSULATED

LEGEND

SEALANT



NOTES:

1. REFER TO SIPLAST PREPARATION GUIDELINES FOR PROPER SURFACE TREATMENT OF ALL MATERIALS PRIOR TO APPLICATION OF PARAPRO LIQUID FLASHING MATERIALS.
2. WHERE PRIMER IS INDICATED USE PA-1125 OR PA-917 PRIMER. CONTACT SIPLAST FOR SPECIFIC REQUIREMENTS.
3. PARAPRO AND PARAFLEX CANNOT BE APPLIED IN THE ABOVE CONFIGURATION OVER MEMBRANES OR OTHER MATERIALS CONTAINING UNCURED, SOLVENT-BASED MATERIALS. IN SUCH CASES, MEMBRANES TO BE COVERED WITH PARAPRO OR PARAFLEX MUST BE ADHERED WITH SFT ADHESIVE, SFT H CEMENT, OR PS-715 NS ELASTOMERIC SEALANT. CONTACT SIPLAST FOR FURTHER INFORMATION.
4. REQUIREMENTS AND RECOMMENDATIONS DETAILED IN CURRENT SIPLAST SPECIFICATIONS AND THE PARAPRO 123 OR PARAFLEX 531 FLASHING SYSTEM INSTALLER'S GUIDE SHALL APPLY IN ADDITION TO THE ABOVE DRAWING.

CAUTION: SIPLAST RECOMMENDS THAT ALL PRACTICES PERTAINING TO INDUSTRY STANDARD TORCH SAFETY REQUIREMENTS AND GUIDELINES BE FOLLOWED. THIS INCLUDES PERFORMING A FIRE WATCH FOLLOWING ANY TORCH APPLICATIONS. ALWAYS HAVE APPROVED FIRE EXTINGUISHING EQUIPMENT NEARBY WHEN USING A TORCH.

Scale: NTS

REF:OVERFLOW SCUPPER - LIQUID APPLIED FLASHING - SBS SELF-ADHESIVE SYSTEM - INSULATED

Detail Number:
DE-0513



14911 Quorum Drive, Suite 600 - Dallas, Texas - 75254 (800) 922-8800

www.siplast.com

Rev: 02.29.2024