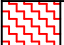

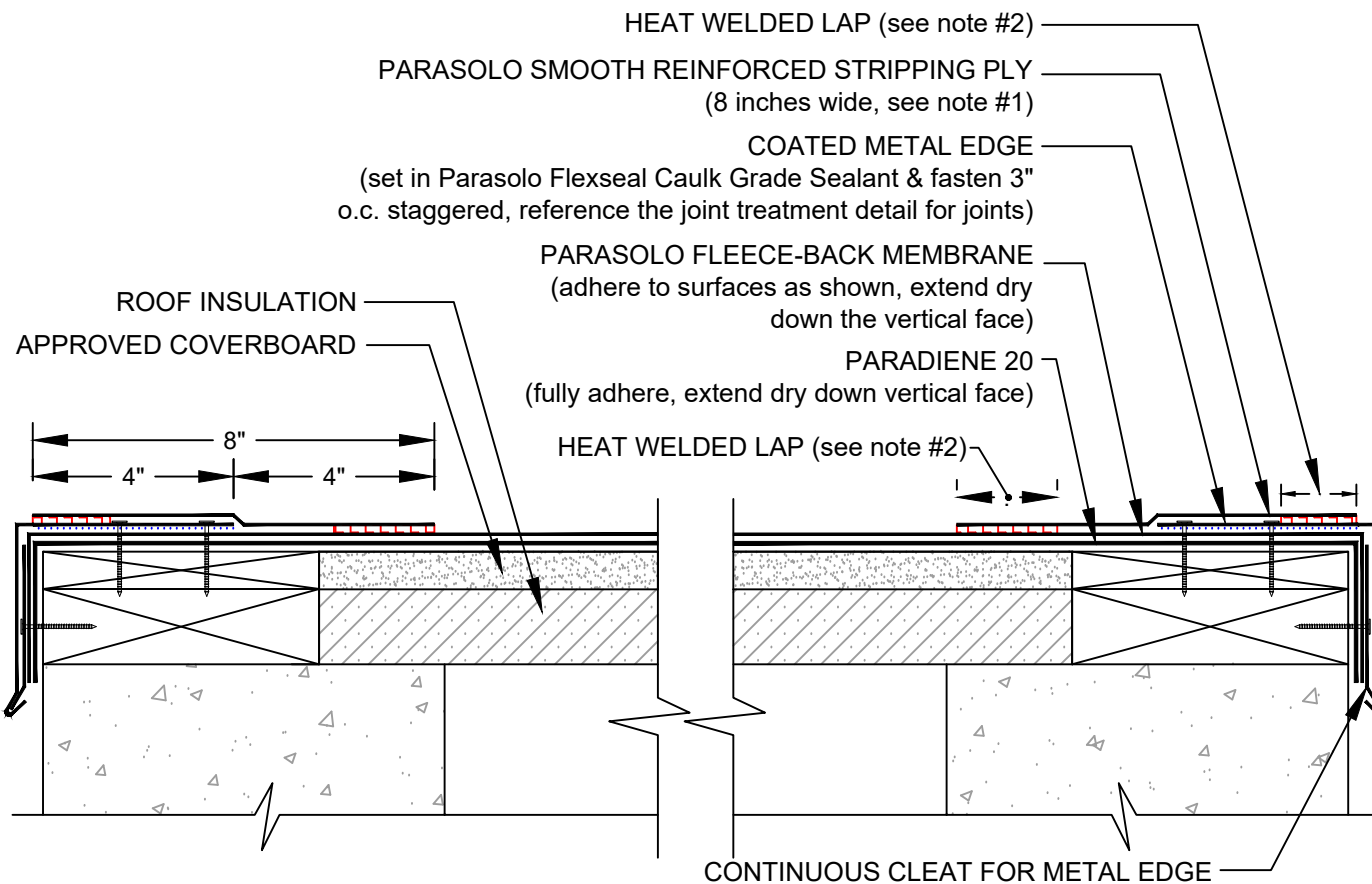


COATED METAL ROOF EDGE PARASOLO HYBRID SYSTEMS - INSULATED

LEGEND	
	HEAT WELD
	SEALANT



NOTES:

1. METAL EDGE AND PARASOLO STRIPPING PLY SHOULD BE INSTALLED TOGETHER IN A SAME-DAY APPLICATION.
2. FOR HEAT-WELDING LAPS USE 1" MINIMUM WELD TO 1-1/2" MAXIMUM WELD.
3. REQUIREMENTS AND RECOMMENDATIONS DETAILED IN CURRENT SIPLAST SPECIFICATIONS SHALL APPLY IN ADDITION TO THE ABOVE DRAWING.

CAUTION: SIPLAST RECOMMENDS THAT ALL PRACTICES PERTAINING TO NRCA CERTA GUIDELINES BE FOLLOWED WHEN TORCHING METHODS ARE EMPLOYED. THIS INCLUDES PERFORMING A FIRE WATCH FOLLOWING ANY TORCH APPLICATIONS. ALWAYS HAVE APPROVED FIRE-EXTINGUISHING EQUIPMENT NEARBY.

Scale: NTS

REF: ROOF EDGE - PARASOLO - P20 - INSULATED

Detail Number:
DE-6406



14911 Quorum Drive, Suite 600 - Dallas, Texas - 75254 (800) 922-8800

www.siplast.com

Rev: 06.06.2023