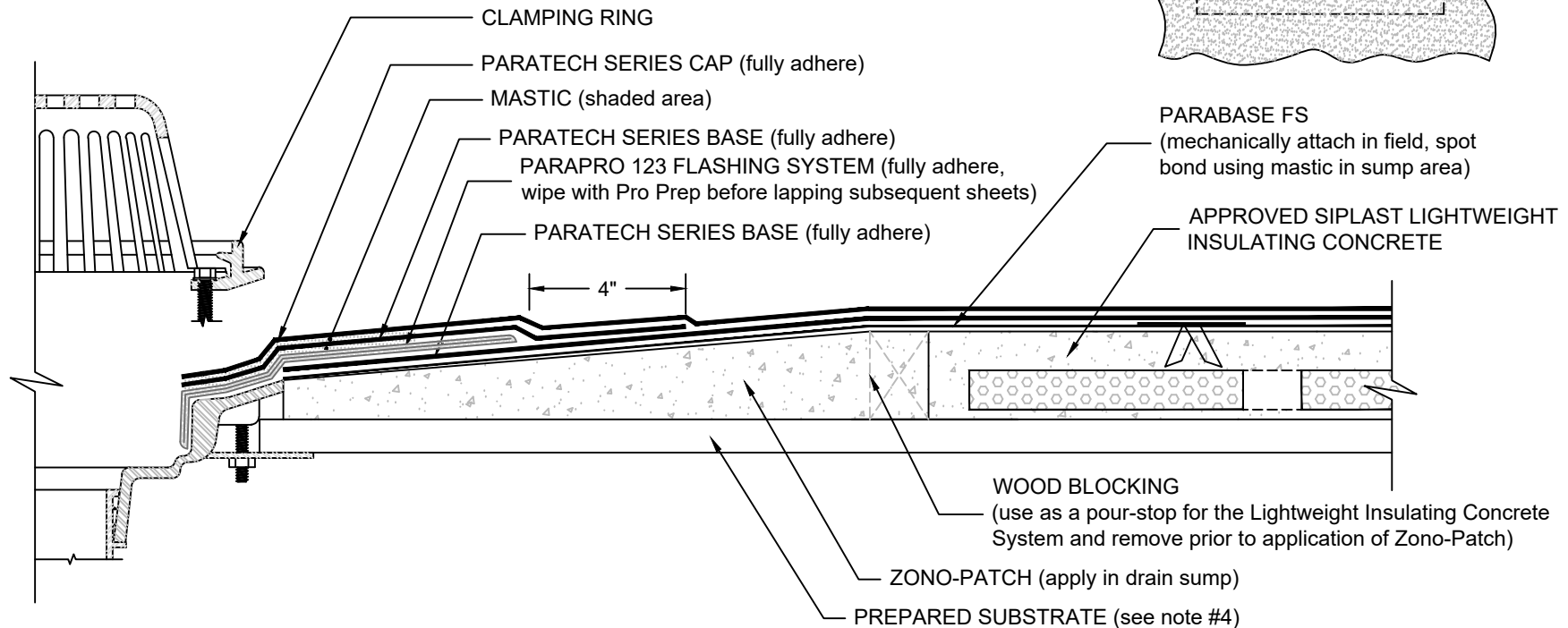
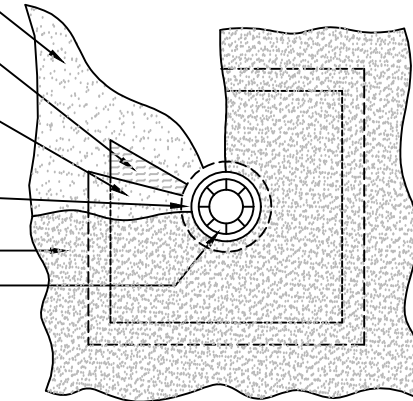


# ROOF DRAIN with INTER-PLY PARAPRO FLASHING PARATECH - SIPLAST LIGHTWEIGHT INSULATING CONCRETE

OVERHEAD VIEW

PARATECH SERIES BASE (fully adhere)  
PARAPRO 123 FLASHING SYSTEM (extend a minimum 8"  
beyond outermost edge of drain)  
PARATECH SERIES BASE (fully adhere, lap a minimum  
of 4" beyond Parapro 123 Flashing)  
MASTIC (set all roof layers above Parapro 123 Flashing  
in mastic 6" around drain perimeter)  
PARATECH SERIES CAP  
STRAINER & CLAMPING RING



## NOTES:

1. ROOF DRAIN COMPONENTS AND INSTALLATION GUIDELINES ARE SUPPLIED BY THE DRAIN MANUFACTURER.
2. PA-1021 PLASTIC CEMENT, PA-828 FLASHING CEMENT, SFT CEMENT, OR PS-715 NS ELASTOMERIC SEALANT IS REQUIRED WHERE MASTIC IS INDICATED.
3. REQUIREMENTS AND RECOMMENDATIONS DETAILED IN THE CURRENT SIPLAST SPECIFICATIONS SHALL APPLY IN ADDITION TO THE ABOVE DRAWING.
4. REFERENCE THE SIPLAST TECHNICAL GUIDE FOR THE APPROPRIATE SIPLAST LIGHTWEIGHT INSULATING CONCRETE SYSTEM WITH REGARD TO SPECIFIC SUBSTRATE TYPES.

CAUTION: SIPLAST RECOMMENDS THAT ALL PRACTICES PERTAINING TO NRCA CERTA GUIDELINES BE FOLLOWED WHEN TORCHING METHODS ARE EMPLOYED. THIS INCLUDES PERFORMING A FIRE WATCH FOLLOWING ANY TORCH APPLICATIONS. ALWAYS HAVE APPROVED FIRE-EXTINGUISHING EQUIPMENT NEARBY.

N.T.S