

ROOF DRAIN

TERANAP - CONCRETE SUBSTRATE

SHOWN WITHOUT OVERBURDEN COMPONENTS

OVERHEAD VIEW

CONCRETE DECK
(prime at the rate of 1 gal. per 100 - 400 s.f.)

PARADIENE 20 (fully adhere)

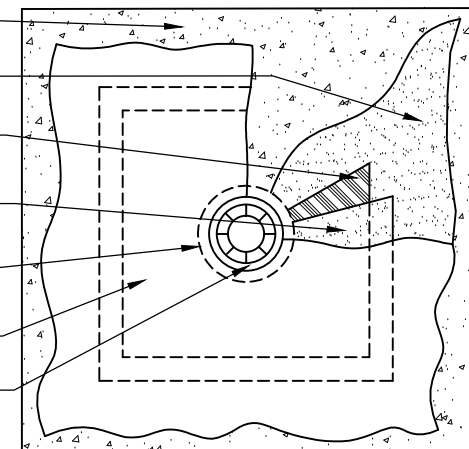
LEAD FLASHING (4 lb., 30" X 30" prime and set in mastic)

PARADIENE 20 (39" X 39", fully adhere
lap a minimum of 4" beyond lead)

MASTIC (torch-off film if present, and set all roof
layers in mastic 6" around drain perimeter)

TERANAP (fully adhere)

STRAINER & CLAMPING RING



CLAMPING RING

TERANAP

MASTIC (shaded area)

PARADIENE 20

LEAD FLASHING

PARADIENE 20

4"

CONCRETE DECK
(prime at the rate of 1 gal per 100 - 400 sq. ft.)

NOTES:

1. PA-1021 PLASTIC CEMENT IS REQUIRED WHERE MASTIC IS INDICATED.
2. WHERE PRIMER IS INDICATED PA-1125 OR PA-917 LS PRIMER ARE REQUIRED TO MAINTAIN PROPER ADHESION. CONTACT SIPLAST FOR SPECIFIC REQUIREMENTS.
3. ROOF DRAIN COMPONENTS AND INSTALLATION GUIDELINES ARE SUPPLIED BY THE DRAIN MANUFACTURER.
4. CONSULT TERANAP SPECIFICATION PLATES FOR OVERBURDEN/PROTECTION SYSTEM OPTIONS.
5. REQUIREMENTS AND RECOMMENDATIONS DETAILED IN CURRENT SIPLAST SPECIFICATIONS SHALL APPLY IN ADDITION TO THE ABOVE DRAWING.

CAUTION: SIPLAST RECOMMENDS THAT ALL PRACTICES PERTAINING TO NRCA CERTA GUIDELINES BE FOLLOWED WHEN TORCHING METHODS ARE EMPLOYED. THIS INCLUDES PERFORMING A FIRE WATCH FOLLOWING ANY TORCH APPLICATIONS. ALWAYS HAVE APPROVED FIRE-EXTINGUISHING EQUIPMENT NEARBY.

N.T.S



1000 Rochelle Boulevard - Irving, Texas - 75062 (800) 922-8800 www.siplast.com

Ref: Roof Drain - Teranap - Concrete

Rev: 1.23.17