

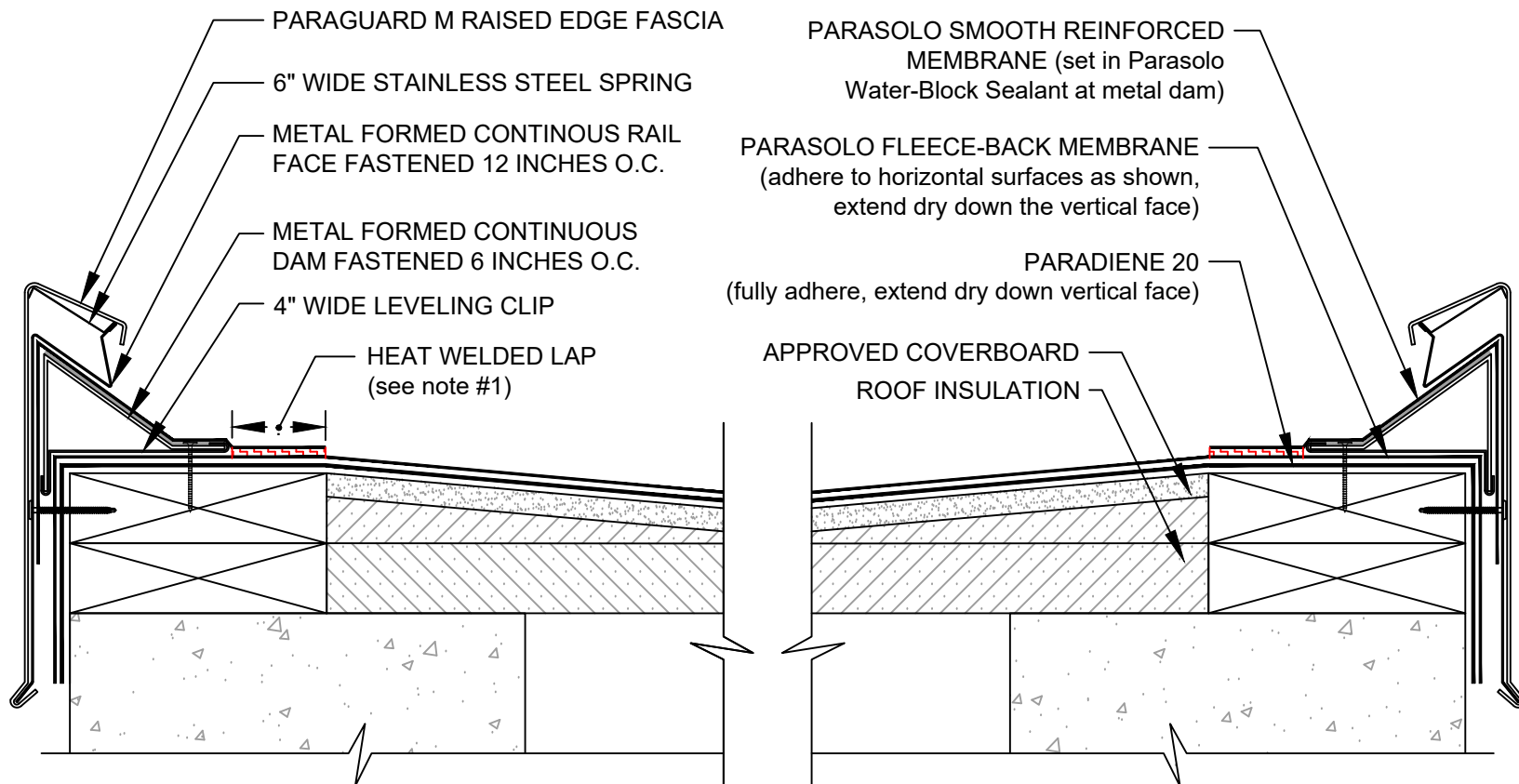
PARAGUARD M RAISED EDGE SYSTEM

PARASOLO HYBRID SYSTEMS - INSULATED

LEGEND



HEAT WELD



NOTES:

1. FOR HEAT-WELDING LAPS USE 1" MINIMUM WELD TO 1-1/2" MAXIMUM WELD.
2. THE PARAGUARD M RAISED EDGE SYSTEM DOES NOT ALLOW FOR DRAINAGE AT THE ROOF EDGE; APPROPRIATE SLOPE SHOULD BE PROVIDED AWAY FROM THE EDGE AND TOWARDS INTERNAL ROOF DRAINS.
3. REQUIREMENTS AND RECOMMENDATIONS DETAILED IN CURRENT SIPLAST SPECIFICATIONS SHALL APPLY IN ADDITION TO THE ABOVE DRAWING.

CAUTION: SIPLAST RECOMMENDS THAT ALL PRACTICES PERTAINING TO NRCA CERTA GUIDELINES BE FOLLOWED WHEN TORCHING METHODS ARE EMPLOYED. THIS INCLUDES PERFORMING A FIRE WATCH FOLLOWING ANY TORCH APPLICATIONS. ALWAYS HAVE APPROVED FIRE-EXTINGUISHING EQUIPMENT NEARBY.

Scale: NTS

REF: PARAGUARD M RAISED EDGE - PARASOLO - P20 - INSULATED

Detail Number:
DE-6409



14911 Quorum Drive, Suite 600 - Dallas, Texas - 75254 (800) 922-8800

www.siplast.com

Rev: 06.06.2023