

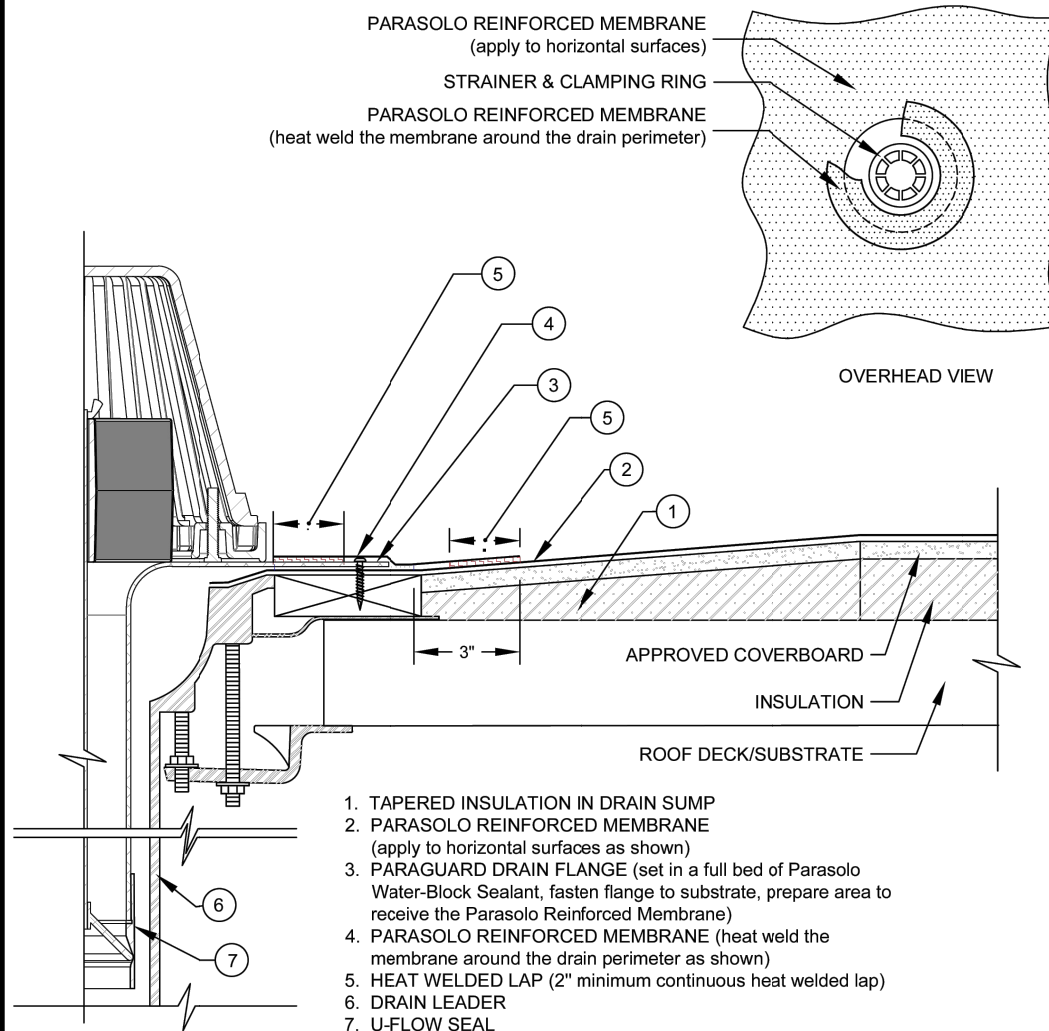


# PARAGUARD COATED ROOF DRAIN W/ PARASOLO MEMBRANE PARASOLO ROOF MEMBRANE - INSULATED (ALL SYSTEMS)

LEGEND	
	HEAT WELD
	SEALANT



## NOTES:

1. FOLLOW SIPLAST SPECIFICATIONS FOR INSTALLATION OF PARAGUARD ROOF DRAIN COMPONENTS.
2. THE MEMBRANE MUST COVER AND EXTEND BEYOND THE FASTENER HEADS.
3. REQUIREMENTS AND RECOMMENDATIONS DETAILED IN THE CURRENT SIPLAST SPECIFICATIONS SHALL APPLY IN ADDITION TO THE ABOVE DRAWING.

Scale: NTS

REF: PARAGUARD COATED DRAIN - PARASOLO - INSULATED



14911 Quorum Drive, Suite 600 - Dallas, Texas - 75254  
(800) 922-8800

[www.siplast.com](http://www.siplast.com)

Detail Number:  
DE-6224

Rev: 06.08.2023

For full size PDF or DWG drawing  
go to [siplast.com](http://siplast.com) and type the  
detail number in the search bar.

[Return to Master Table of Contents](#)

[Return to Parasolo Insulated Details Table of Contents](#)