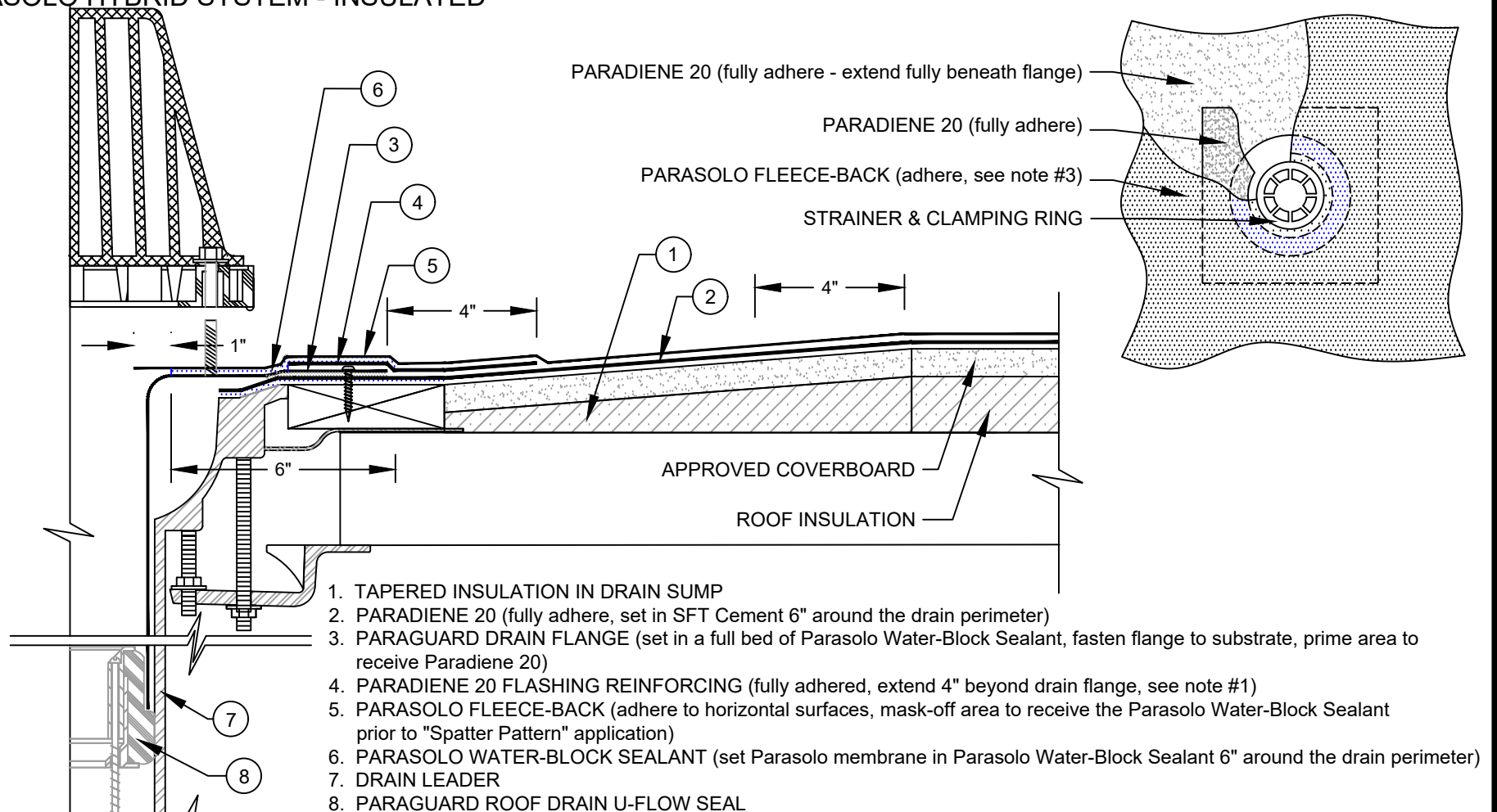


# PARAGUARD ROOF DRAIN WITH PARASOLO FLEECE-BACK PARASOLO HYBRID SYSTEM - INSULATED

LEGEND

SEALANT



## NOTES:

1. WHERE FLASHING REINFORCING IS INDICATED TO MAINTAIN PROPER ADHESION, USE PA-1125 OR PA-917 LS PRIMER. CONTACT SIPLAST FOR SPECIFIC REQUIREMENTS.
  2. FOLLOW SIPLAST SPECIFICATIONS FOR INSTALLATION OF PARAGUARD ROOF DRAIN COMPONENTS.
  3. MEMBRANE MUST EXTEND MINIMUM 1" BEYOND THE BOLTS. THE CLAMPING RING BOLTS MUST PENETRATE THE MEMBRANE.
  4. REQUIREMENTS AND RECOMMENDATIONS DETAILED IN THE CURRENT SIPLAST SPECIFICATIONS SHALL APPLY IN ADDITION TO THE ABOVE DRAWING.
- CAUTION: SIPLAST RECOMMENDS THAT ALL PRACTICES PERTAINING TO INDUSTRY STANDARD TORCH SAFETY REQUIREMENTS AND GUIDELINES BE FOLLOWED. THIS INCLUDES PERFORMING A FIRE WATCH FOLLOWING ANY TORCH APPLICATIONS. ALWAYS HAVE APPROVED FIRE EXTINGUISHING EQUIPMENT NEARBY WHEN USING A TORCH.

Scale: NTS

REF: PARAGUARD ROOF DRAIN - PARASOLO - P20 - INSULATED

Detail Number:

DE-6404



14911 Quorum Drive, Suite 600 - Dallas, Texas - 75254 (800) 922-8800

[www.siplast.com](http://www.siplast.com)

Rev: 06.06.2023