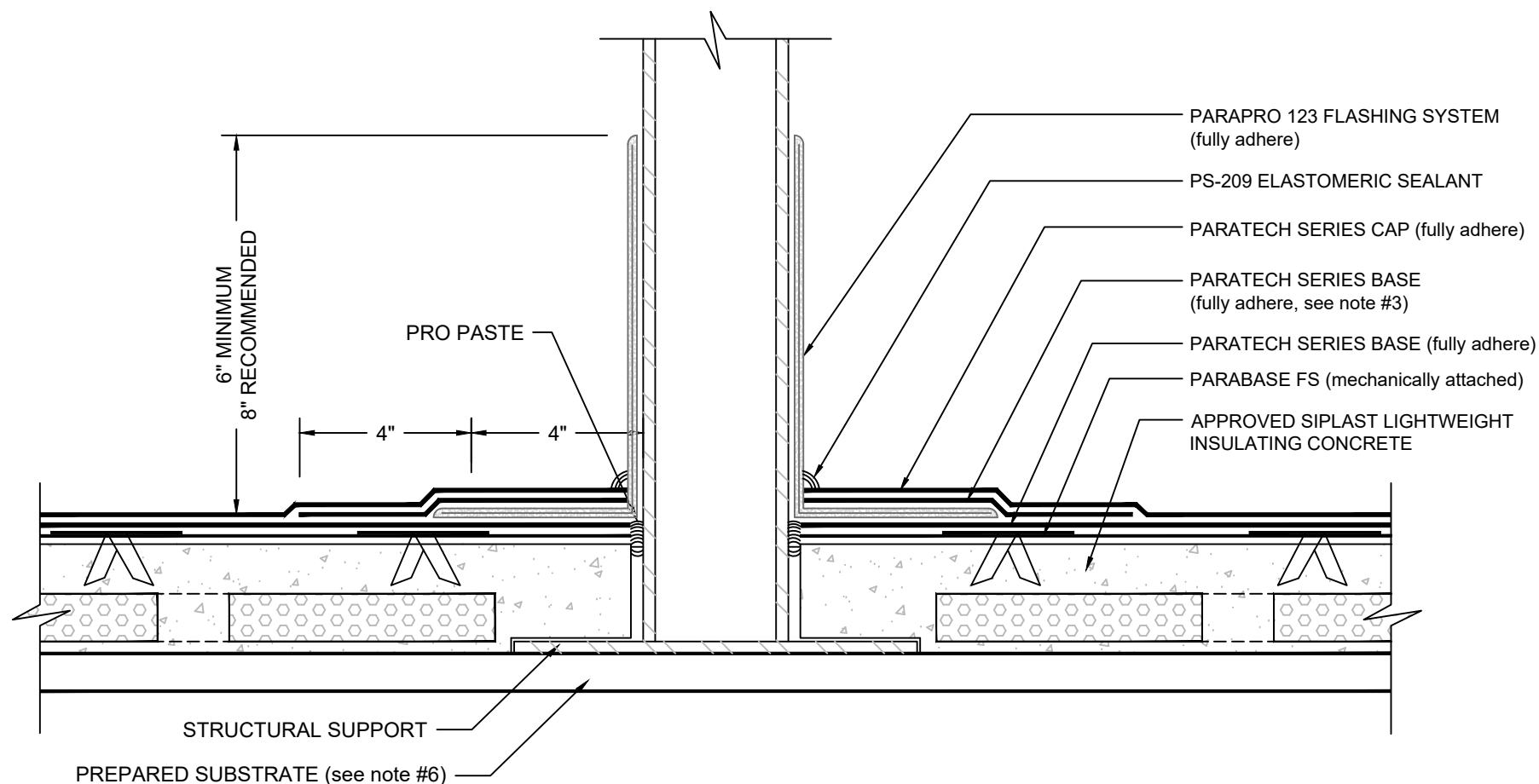


# PENETRATION with INTER-PLY PARAPRO FLASHING

## PARATECH - SIPLAST LIGHTWEIGHT INSULATING CONCRETE



### NOTES:

1. BEFORE APPLICATION OF PARAPRO 123 FLASHING SYSTEM, PRO PASTE SHOULD BE USED TO FILL VOIDS WHERE ROOFING MEMBRANES TERMINATE AT PENETRATIONS.
2. CLEAN/WIPE THE SURFACE OF THE CURED PARAPRO 123 FLASHING WITH PRO PREP AND ALLOW TO DRY PRIOR TO APPLICATION OF THE PARADIENE 20 STRIPPING PLY.
3. THE PARATECH SERIES STRIPPING PLY IS OPTIONAL FOR TORCH-APPLIED MEMBRANE SYSTEMS.
4. REFER TO SIPLAST PREPARATION GUIDELINES FOR PROPER SURFACE TREATMENT OF ALL MATERIALS PRIOR TO APPLICATION OF PARAPRO FLASHING MATERIALS.
5. REFER TO SIPLAST FLEECE CUTTING RECOMMENDATIONS FOR CONFIGURATIONS, CUTTING, FOLDING AND LAPPING TECHNIQUES.
6. REFERENCE THE SIPLAST TECHNICAL GUIDE FOR THE APPROPRIATE SIPLAST LIGHTWEIGHT INSULATING CONCRETE SYSTEM WITH REGARD TO SPECIFIC SUBSTRATE TYPES.
7. REQUIREMENTS AND RECOMMENDATIONS DETAILED IN CURRENT SIPLAST SPECIFICATIONS AND THE PARAPRO 123 FLASHING SYSTEM INSTALLER'S GUIDE SHALL APPLY IN ADDITION TO THE ABOVE DRAWING.

CAUTION: SIPLAST RECOMMENDS THAT ALL PRACTICES PERTAINING TO NRCA CERTA GUIDELINES BE FOLLOWED WHEN TORCHING METHODS ARE EMPLOYED. THIS INCLUDES PERFORMING A FIRE WATCH FOLLOWING ANY TORCH APPLICATIONS. ALWAYS HAVE APPROVED FIRE-EXTINGUISHING EQUIPMENT NEARBY.

N.T.S