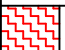
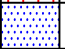
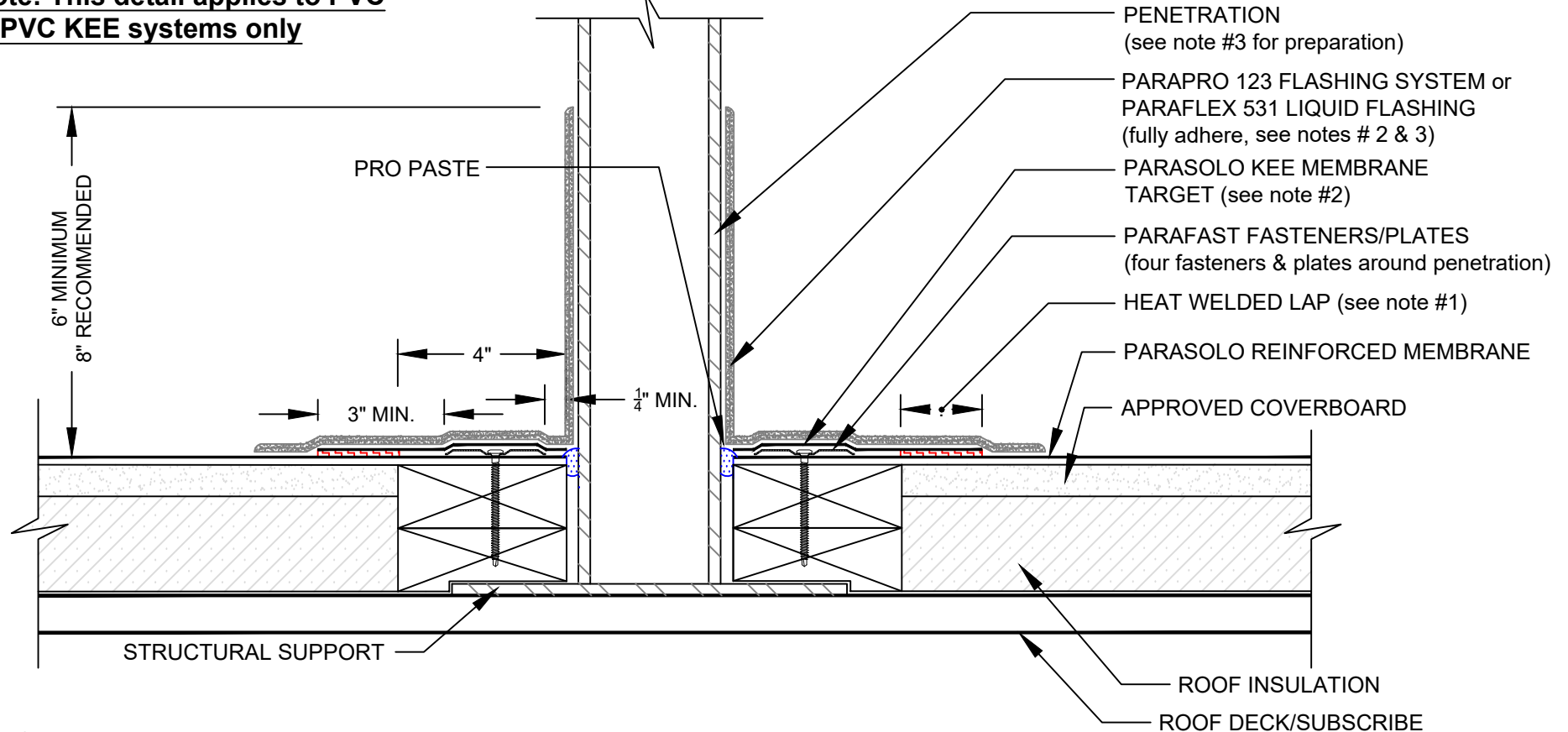


PENETRATION WITH PARAPRO/PARAFLEX 531 LIQUID FLASHING

PARASOLO ROOF MEMBRANE - INSULATED (ALL SYSTEMS)

**Note: This detail applies to PVC
& PVC KEE systems only**

LEGEND	
	HEAT WELD
	SEALANT



- NOTES:
1. FOR HEAT-WELDING LAPS USE 1" MINIMUM. WELD TO 1-1/2" MAXIMUM WELD.
 2. PARASOLO KEE MEMBRANE IS REQUIRED AT LOCATIONS TO RECEIVE PARAFLEX 531 LIQUID FLASHING SYSTEMS. PARAFLEX 531 LIQUID FLASHING CAN BE UTILIZED WITH PARASOLO PVC KEE ONLY.
 3. REFER TO SIPLAST PREPARATION GUIDELINES FOR PROPER SURFACE TREATMENT OF ALL MATERIALS PRIOR TO APPLICATION OF PARAPRO OR PARAFLEX 531 LIQUID FLASHING MATERIALS.
 4. PENETRATIONS TO RECEIVE THE PARAPRO 123 FLASHING SYSTEM OR PARAFLEX 531 LIQUID FLASHING MUST BE SECURED TO THE STRUCTURE TO PREVENT MOVEMENT.
 5. REQUIREMENTS AND RECOMMENDATIONS DETAILED IN CURRENT SIPLAST SPECIFICATIONS SHALL APPLY IN ADDITION TO THE ABOVE DRAWING.

Scale: NTS

REF: PENETRATION - PARASOLO - INSULATED - PPRO - PFLEX

Detail Number:
DE-6235



14911 Quorum Drive, Suite 600 - Dallas, Texas - 75254 (800) 922-8800

www.siplast.com

Rev: 06.22.2023