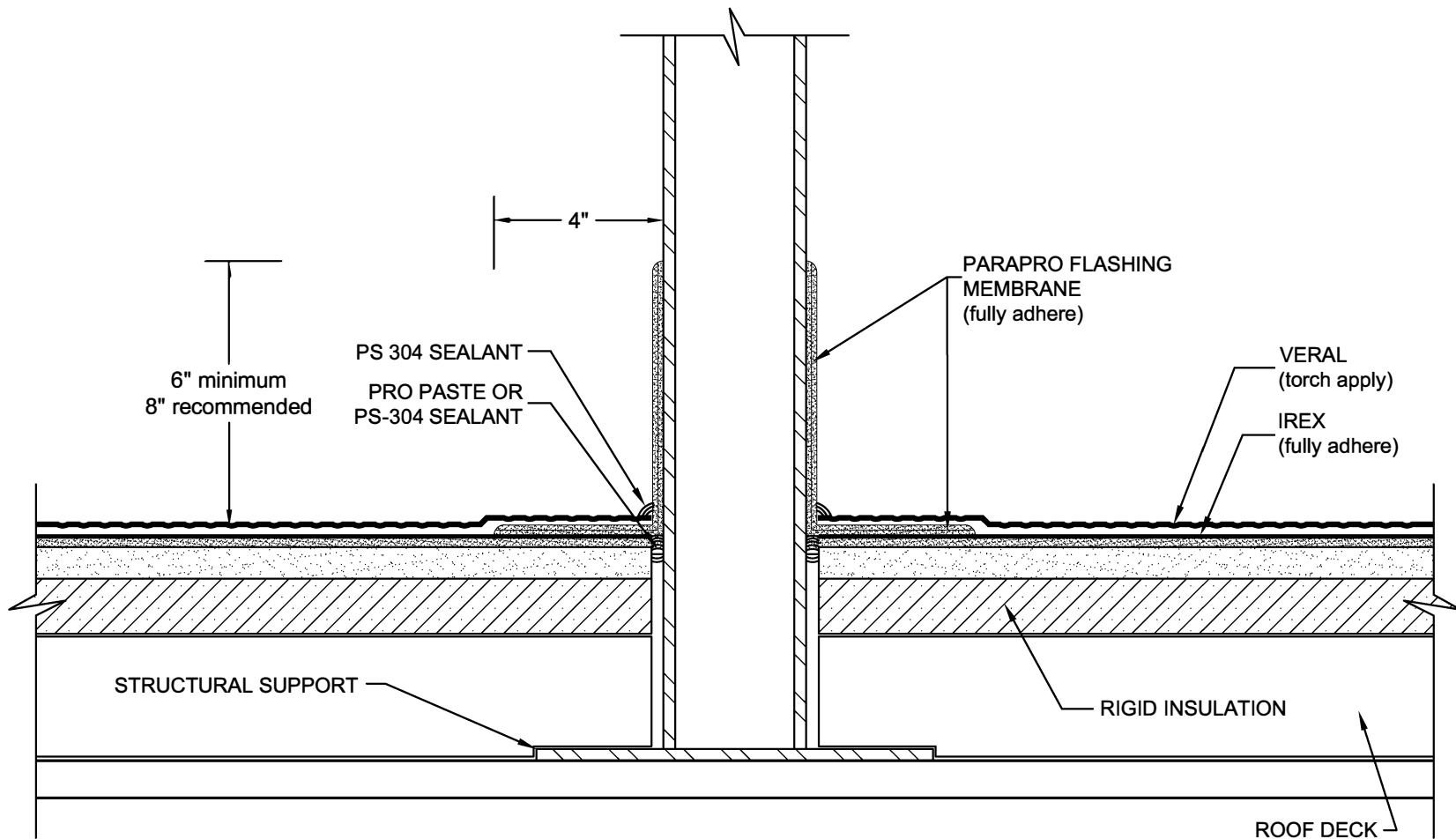


GENERIC PENETRATION (PARAPRO FLASHING INTERPLY)

IREX / VERAL - RIGID INSULATION



- NOTES:
1. BEFORE APPLICATION OF THE PARAPRO 123 FLASHING SYSTEM, PRO PASTE OR PS-304 ELASTOMERIC SEALANT SHOULD BE USED TO FILL VOIDS WHERE ROOFING MEMBRANES TERMINATE AT PENETRATIONS.
 2. PREVIOUS VERSIONS OF THIS DETAIL INDICATED THE USE OF A PARADIENE 20 STRIPPING PLY. THE STRIPPING PLY IS NOT SHOWN IN THE ABOVE SCHEMATIC AND IS NOW CONSIDERED OPTIONAL IN ROOF CONSTRUCTIONS UTILIZING A SELF ADHESIVE BASE PLY OR A BASE PLY ADHERED WITH HOT ASPHALT OR BY TORCH.
 3. REFER TO SIPLAST PREPARATION GUIDELINES FOR PROPER SURFACE TREATMENT OF ALL MATERIALS PRIOR TO APPLICATION OF PARAPRO FLASHING.
 4. PARAPRO CANNOT BE APPLIED IN THE ABOVE CONFIGURATION OVER MATERIALS APPLIED IN UNCURED, SOLVENT BASED MATERIALS. IN SUCH CASES MEMBRANES TO BE COVERED WITH PARAPRO MUST BE ADHERED WITH SFT ADHESIVE OR PS-304 SEALANT. CONTACT SIPLAST FOR TREATMENT OPTIONS OF CONDITIONS UTILIZING A BASE PLY APPLIED IN SOLVENT BASED ADHESIVE.
 5. REFER TO SIPLAST FLEECE CUTTING RECOMMENDATIONS FOR CONFIGURATIONS, CUTTING, FOLDING AND LAPPING TECHNIQUES.
 6. REQUIREMENTS AND RECOMMENDATIONS DETAILED IN THE CURRENT SIPLAST SPECIFICATIONS AND THE PARAPRO 123 FLASHING SYSTEM INSTALLER'S GUIDE SHALL APPLY IN ADDITION TO THE ABOVE DRAWING.

CAUTION: SIPLAST RECOMMENDS THAT ALL PRACTICES PERTAINING TO NRCA CERTA GUIDELINES BE FOLLOWED WHEN TORCHING METHODS ARE EMPLOYED. THIS INCLUDES PERFORMING A FIRE WATCH FOLLOWING ANY TORCH APPLICATIONS. ALWAYS HAVE APPROVED FIRE-EXTINGUISHING EQUIPMENT NEARBY.

N.T.S.