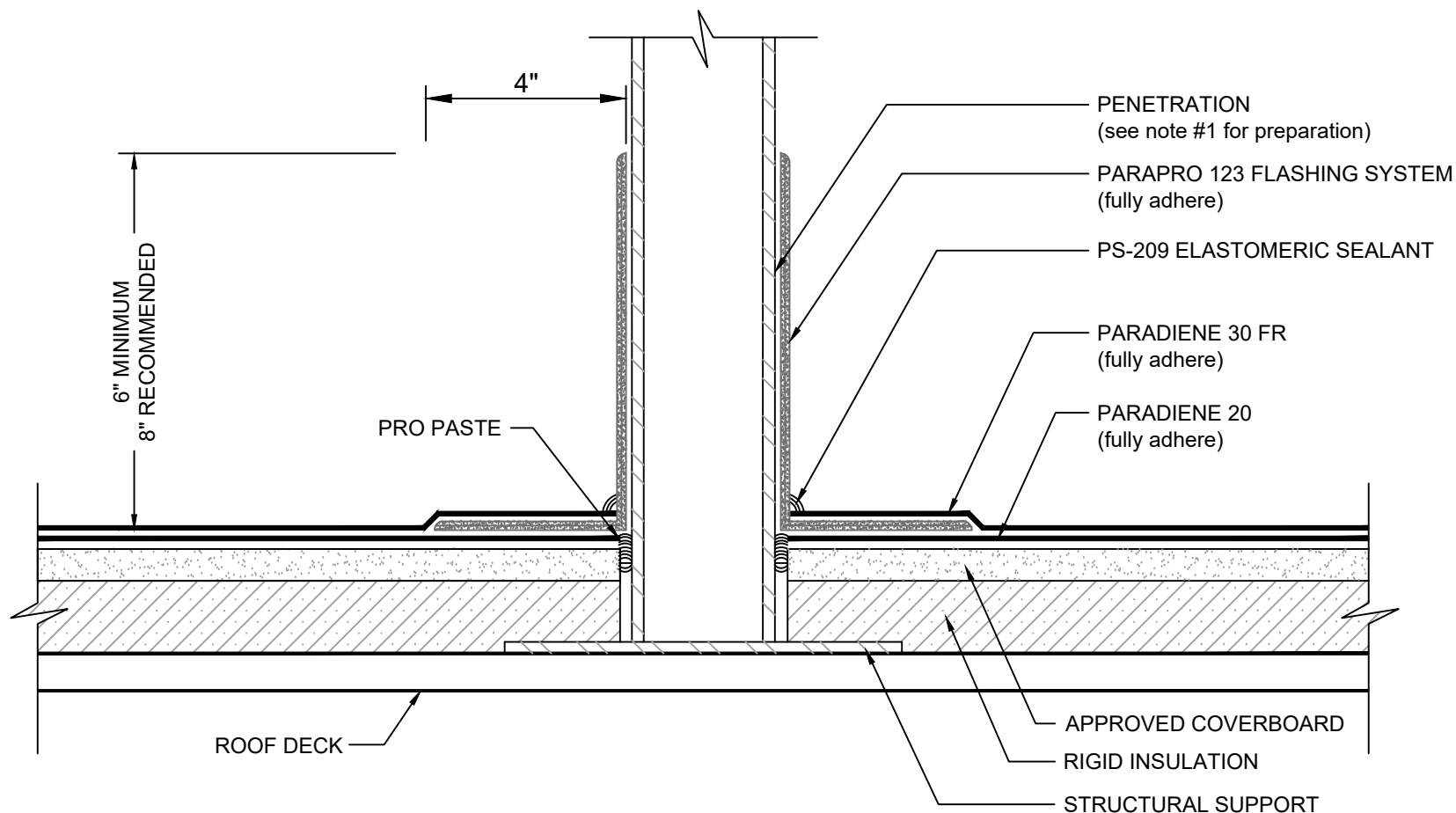


PENETRATION with TORCH APPLIED MEMBRANE and INTER-PLY PARAPRO FLASHING PARADIENE 20/30 FR - RIGID INSULATION



NOTES:

1. REFER TO SIPLAST PREPARATION GUIDELINES FOR PROPER SURFACE TREATMENT OF ALL MATERIALS PRIOR TO APPLICATION OF PARAPRO MATERIALS.
2. BEFORE APPLICATION OF THE PARAPRO 123 FLASHING SYSTEM, PRO PASTE SHOULD BE USED TO FILL VOIDS WHERE ROOFING MEMBRANES TERMINATE AT PENETRATIONS.
3. CLEAN/WIPE THE SURFACE OF THE CURED PARAPRO 123 FLASHING WITH PRO PREP AND ALLOW TO DRY PRIOR TO APPLICATION OF THE PARADIENE 30 FR FINISH PLY.
4. A STRIPPING PLY IS NOT SHOWN IN THE ABOVE SCHEMATIC AND IS CONSIDERED OPTIONAL IN ROOF CONSTRUCTIONS UTILIZING A SELF ADHESIVE BASE PLY OR A BASE PLY ADHERED WITH HOT ASPHALT OR BY TORCH.
5. PARAPRO CANNOT BE APPLIED IN THE ABOVE CONFIGURATION OVER MATERIALS APPLIED IN UNCURED, SOLVENT BASED MATERIALS. IN SUCH CASES MEMBRANES TO BE COVERED WITH PARAPRO MUST BE ADHERED WITH SFT ADHESIVE, SFT CEMENT, PS-209, OR PS-715 NS ELASTOMERIC SEALANT. CONTACT SIPLAST FOR ALTERNATIVE DETAILS THAT ALLOW FOR APPLICATION OVER A BASE PLY APPLIED IN SOLVENT BASED ADHESIVE.
6. REFER TO SIPLAST FLEECE CUTTING RECOMMENDATIONS FOR CONFIGURATIONS, CUTTING, FOLDING AND LAPPING TECHNIQUES.
7. REQUIREMENTS AND RECOMMENDATIONS DETAILED IN CURRENT SIPLAST SPECIFICATIONS AND THE PARAPRO 123 FLASHING SYSTEM INSTALLER'S GUIDE SHALL APPLY IN ADDITION TO THE ABOVE DRAWING.

CAUTION: SIPLAST RECOMMENDS THAT ALL PRACTICES PERTAINING TO NRCA CERTA GUIDELINES BE FOLLOWED WHEN TORCHING METHODS ARE EMPLOYED. THIS INCLUDES PERFORMING A FIRE WATCH FOLLOWING ANY TORCH APPLICATIONS. ALWAYS HAVE APPROVED FIRE-EXTINGUISHING EQUIPMENT NEARBY.

N.T.S



1000 Rochelle Boulevard - Irving, Texas - 75062 (800) 922-8800 www.siplast.com

Ref: Penetration (inter-ply) - 2030 - Rigid - Ppro

Rev: 04.23.21