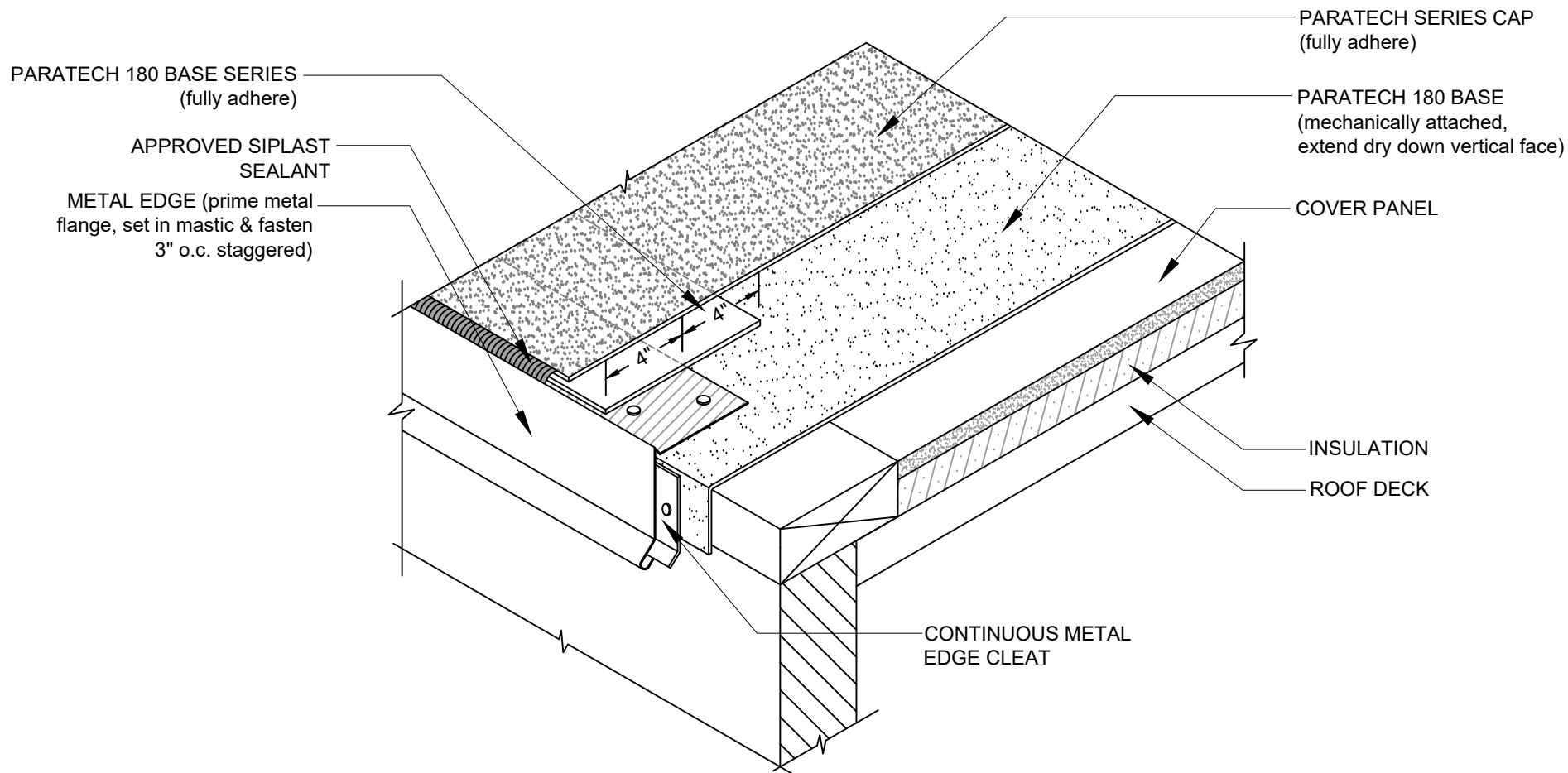


# ROOF EDGE

## PARATECH MECHANICALLY ATTACHED SYSTEM - INSULATED



### NOTES:

1. WHERE PRIMER IS INDICATED TO MAINTAIN PROPER ADHESION, USE PA-1125 OR PA-917 LS PRIMER. CONTACT SIPLAST FOR SPECIFIC REQUIREMENTS.
2. THE CARPENTRY AND METAL WORK SHOWN DEPICTS SHOP FABRICATION AND JOB-SITE ASSEMBLY. THESE COMPONENTS SHOULD BE DESIGNED/FABRICATED/INSTALLED ACCORDING TO GENERALLY ACCEPTED INDUSTRY PRACTICES, STANDARDS, AND APPROVALS.
3. PA-1021 PLASTIC CEMENT, PA-828 FLASHING CEMENT, SFT CEMENT, OR PS-715 NS ELASTOMERIC SEALANT IS REQUIRED WHERE MASTIC IS INDICATED.
4. REQUIREMENTS AND RECOMMENDATIONS DETAILED IN CURRENT SIPLAST SPECIFICATIONS SHALL APPLY IN ADDITION TO THE ABOVE DRAWING.

**CAUTION:** SIPLAST RECOMMENDS THAT ALL PRACTICES PERTAINING TO INDUSTRY STANDARD TORCH SAFETY REQUIREMENTS AND GUIDELINES BE FOLLOWED. THIS INCLUDES PERFORMING A FIRE WATCH FOLLOWING ANY TORCH APPLICATIONS. ALWAYS HAVE APPROVED FIRE EXTINGUISHING EQUIPMENT NEARBY WHEN USING A TORCH.

Scale: NTS

ROOF EDGE - PARATECH MECHANICALLY ATTACHED - INSULATED

**Detail Number:**  
DE-3001



14911 Quorum Drive, Suite 600 - Dallas, Texas - 75254 (800) 922-8800

[www.siplast.com](http://www.siplast.com)

**Rev:** 06.07.23