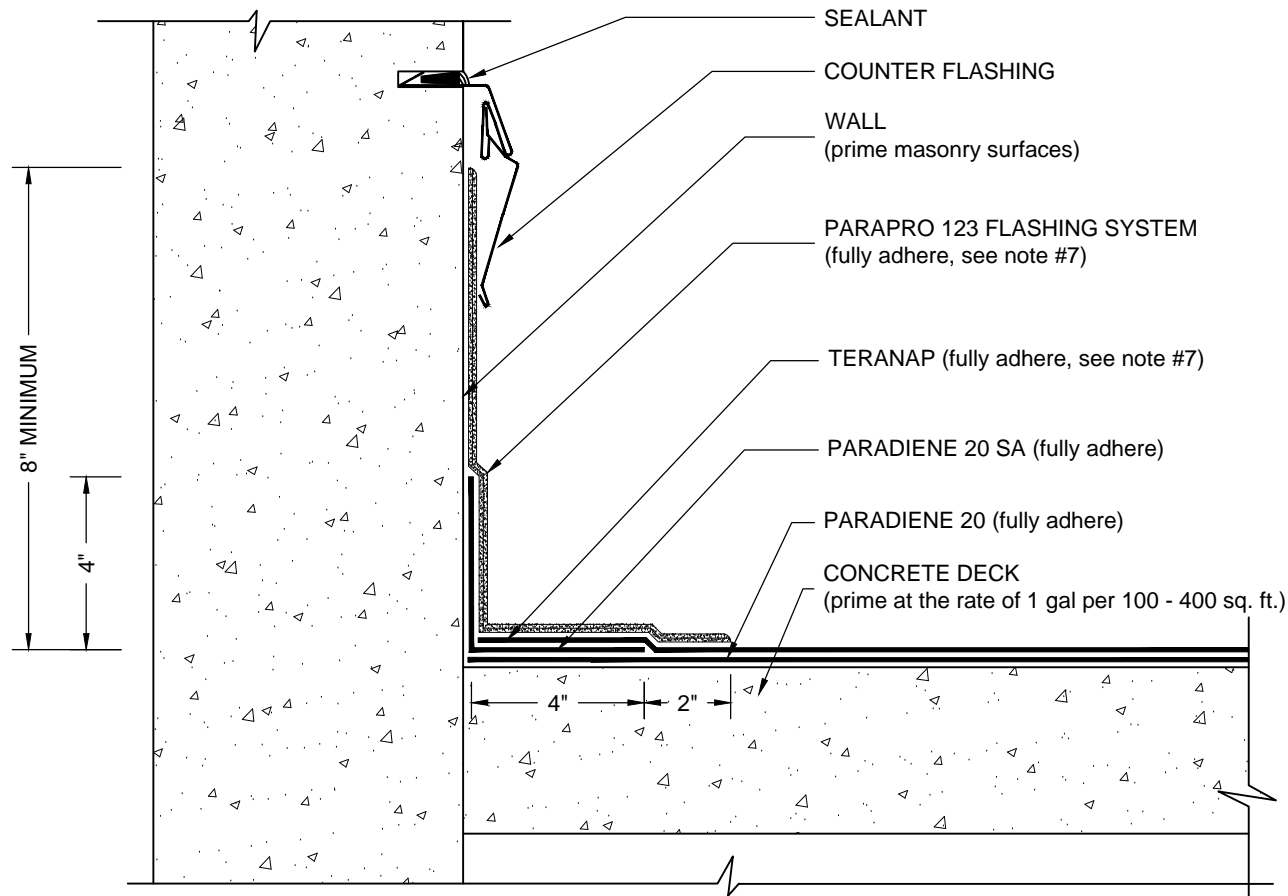


PARAPET - WALL SUPPORTED DECK with PARAPRO FLASHING

TERANAP - CONCRETE SUBSTRATE

SHOWN WITHOUT OVERBURDEN COMPONENTS



NOTES:

1. REFER TO SIPLAST PREPARATION GUIDELINES FOR PROPER SURFACE TREATMENT OF ALL MATERIALS PRIOR TO APPLICATION OF PARAPRO FLASHING MATERIALS.
2. PARAPRO CANNOT BE APPLIED IN THE ABOVE CONFIGURATION OVER MEMBRANES OR OTHER MATERIALS CONTAINING UNCURED, SOLVENT-BASED MATERIALS.
3. REFER TO SIPLAST FLEECE CUTTING RECOMMENDATIONS FOR CONFIGURATIONS, CUTTING, FOLDING, AND LAPPING TECHNIQUES.
4. WHERE PRIMER IS INDICATED PA-1125, PA-917 LS, OR TA-119 PRIMER ARE REQUIRED TO MAINTAIN PROPER ADHESION. TA-119 IS REQUIRED FOR ALL PARADIENE 20 SA FLASHING REINFORCING AND STRIPPING PLY APPLICATIONS. CONTACT SIPLAST FOR SPECIFIC REQUIREMENTS.
5. CONSULT TERANAP SPECIFICATION PLATES FOR OVERBURDEN/PROTECTION SYSTEM OPTIONS.
6. THE CARPENTRY AND METAL WORK SHOWN DEPICTS SHOP FABRICATION AND JOB-SITE ASSEMBLY. THESE COMPONENTS SHOULD BE DESIGNED/FABRICATED/INSTALLED ACCORDING TO GENERALLY ACCEPTED INDUSTRY PRACTICES, STANDARDS, AND APPROVALS. DISSIMILAR METAL TYPES SUBJECT TO ELECTROLYTIC REACTION SHOULD BE PHYSICALLY SEPARATED.
7. PARAPRO FLASHING MEMBRANE CANNOT BE APPLIED TO A TERANAP FILM SURFACE MEMBRANE. ON PROJECTS WHERE A TERANAP FILM SURFACE MEMBRANE IS USED FOR FIELD AND FLASHING APPLICATIONS, INSTALL A TARGET SHEET OF PARADIENE 20 TG, PARAFOR 50 TG OR TERANAP 1M SAND OVER THE TERANAP FILM SURFACE IN ALL AREAS TO RECEIVE DIRECT APPLICATION OF PARAPRO FLASHING MEMBRANE.
8. REQUIREMENTS AND RECOMMENDATIONS DETAILED IN THE PARAPRO 123 FLASHING SYSTEM INSTALLER'S GUIDE SHALL APPLY IN ADDITION TO THE ABOVE DRAWING.

CAUTION: SIPLAST RECOMMENDS THAT ALL PRACTICES PERTAINING TO NRCA CERTA GUIDELINES BE FOLLOWED WHEN TORCHING METHODS ARE EMPLOYED. THIS INCLUDES PERFORMING A FIRE WATCH FOLLOWING ANY TORCH APPLICATIONS. ALWAYS HAVE APPROVED FIRE-EXTINGUISHING EQUIPMENT NEARBY.

N.T.S



1000 Rochelle Boulevard - Irving, Texas - 75062 (800) 922-8800 www.siplast.com

Ref: Parapet - Teranap - Concrete - Ppro

Rev: 01.27.17