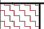

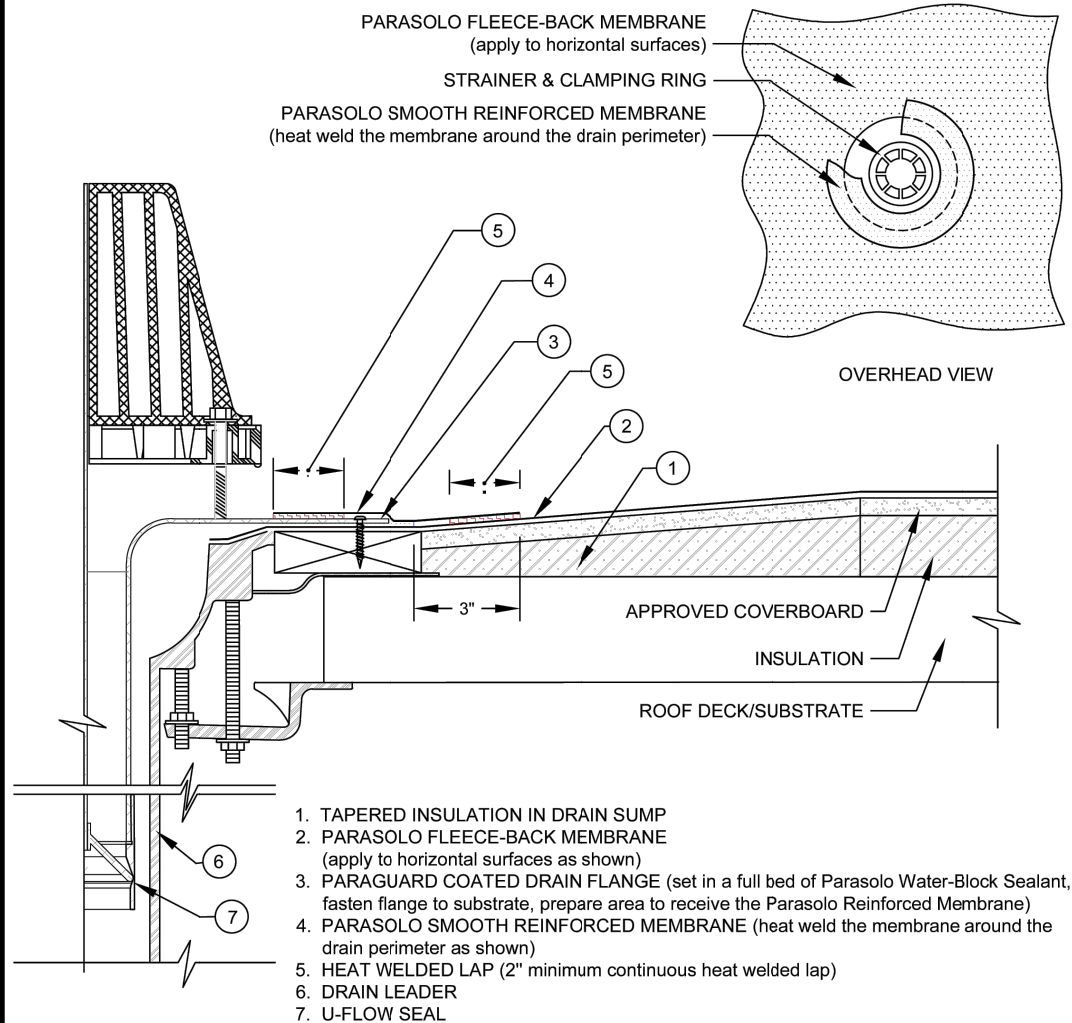


PARAGUARD COATED ROOF DRAIN W/ PARASOLO MEMBRANE PARASOLO FLEECE BACK MEMBRANE - INSULCEL LIGHTWEIGHT INSULATING CONCRETE

LEGEND	
	HEAT WELD
	SEALANT



NOTES:

1. FOLLOW SIPLAST SPECIFICATIONS FOR INSTALLATION OF PARAGUARD ROOF DRAIN COMPONENTS.
2. THE MEMBRANE MUST COVER AND EXTEND BEYOND THE FASTENER HEADS.
3. REQUIREMENTS AND RECOMMENDATIONS DETAILED IN THE CURRENT SIPLAST SPECIFICATIONS SHALL APPLY IN ADDITION TO THE ABOVE DRAWING.

Scale: NTS

REF: PARAGUARD COATED DRAIN - PARASOLO - INSULCEL



14911 Quorum Drive, Suite 600 - Dallas, Texas - 75254
(800) 922-8800

www.siplast.com

Detail Number:
DE-6807

Rev: 06.15.2023

For full size PDF or DWG drawing
go to siplast.com and type the
detail number in the search bar.

[Return to Master Table of Contents](#)

[Return to LWIC Details Table of Contents](#)