

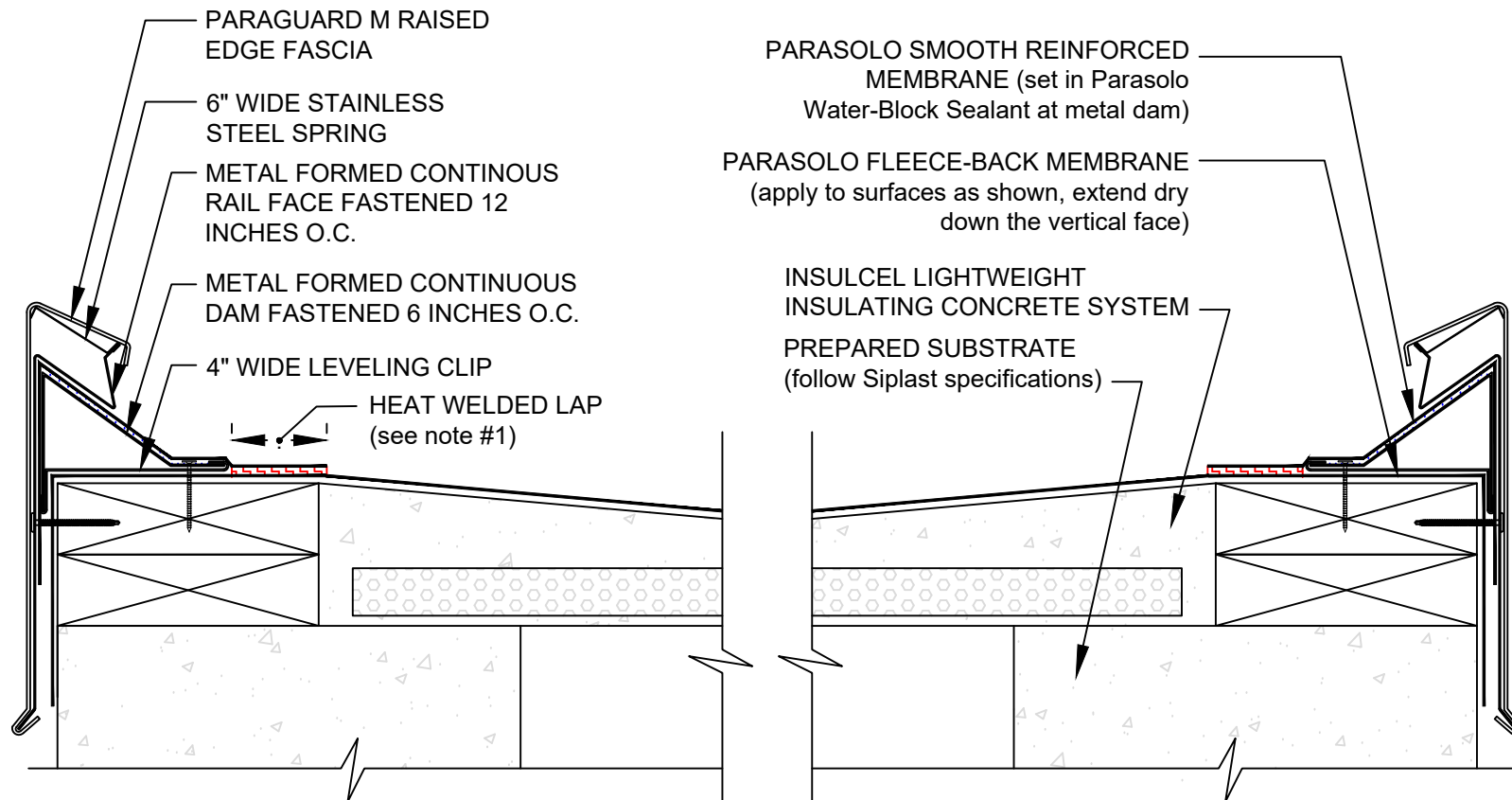
PARAGUARD M RAISED EDGE SYSTEM WITH PARASOLO FLASHING

PARASOLO FLEECE BACK MEMBRANE - INSULCEL LIGHTWEIGHT INSULATING CONCRETE

LEGEND



HEAT WELD



NOTES:

1. FOR HEAT-WELDING LAPS USE 1" MINIMUM TO 1-1/2" MAXIMUM WELD.
2. THE PARAGUARD M RAISED EDGE SYSTEM DOES NOT ALLOW FOR DRAINAGE AT THE ROOF EDGE; APPROPRIATE SLOPE SHOULD BE PROVIDED AWAY FROM THE EDGE AND TOWARDS INTERNAL ROOF DRAINS.
4. REQUIREMENTS AND RECOMMENDATIONS DETAILED IN CURRENT SIPLAST SPECIFICATIONS SHALL APPLY IN ADDITION TO THE ABOVE DRAWING.

Scale: NTS

REF: PGUARD M RAISED EDGE - PARASOLO - INSULATED

Detail Number:

DE-6817



14911 Quorum Drive, Suite 600 - Dallas, Texas - 75254 (800) 922-8800

www.siplast.com

Rev: 06.15.2023