
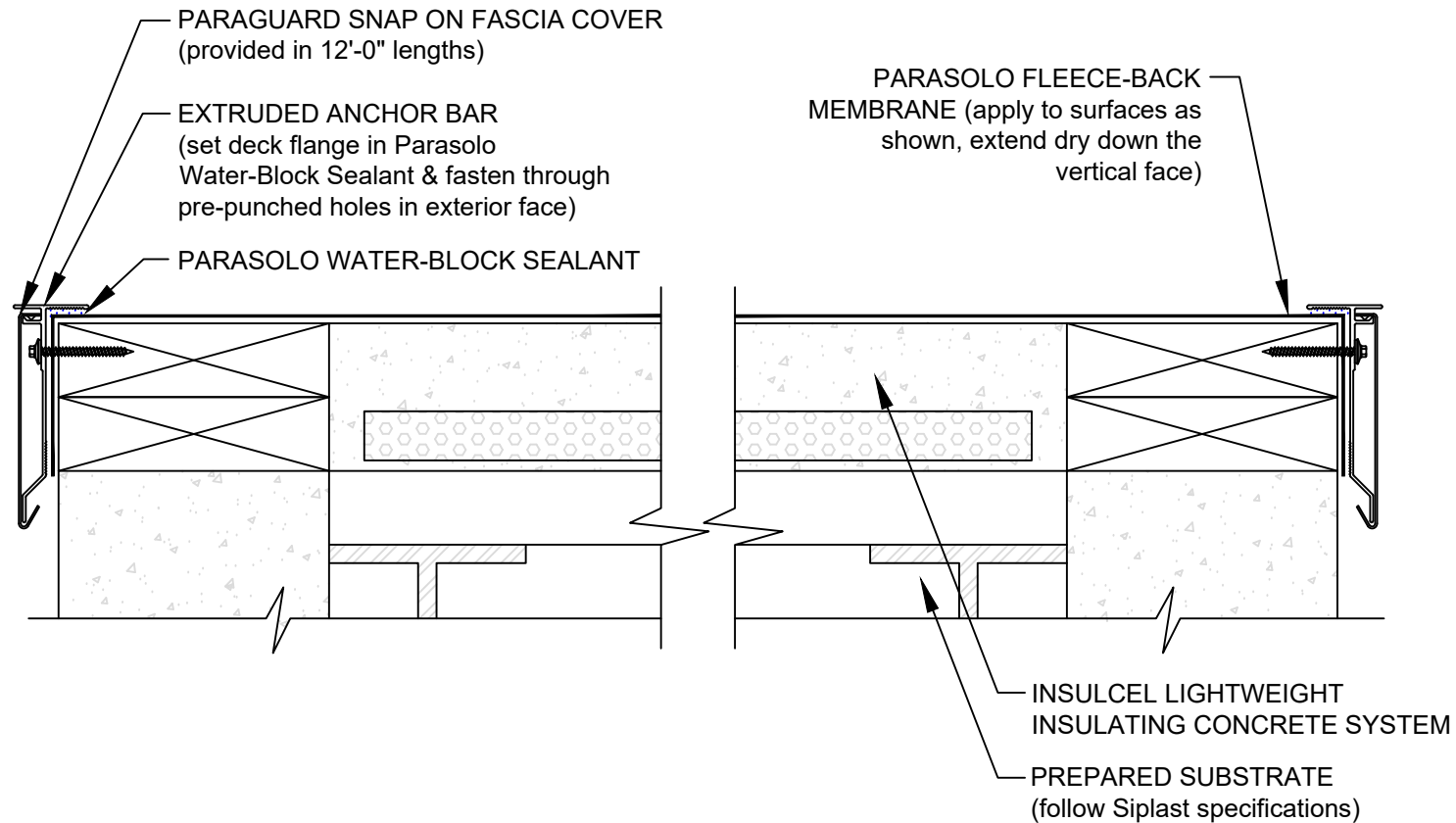


# PARASOLO PARAGUARD EXTRUDED SP DRIP EDGE WITH PARASOLO FLASHING

PARASOLO FLEECE BACK MEMBRANE - INSULCEL LIGHTWEIGHT INSULATING CONCRETE

LEGEND	
	SEALANT



## NOTES:

1. FASCIA FASTENERS ARE PROVIDED WITH THE PARAGUARD SP DRIP EDGE SYSTEM.
2. REQUIREMENTS AND RECOMMENDATIONS DETAILED IN CURRENT SIPLAST SPECIFICATIONS SHALL APPLY IN ADDITION TO THE ABOVE DRAWING.

Scale: NTS

REF: PGUARD SP DRIP EDGE - PARASOLO - INSULATED

Detail Number:  
DE-6815



14911 Quorum Drive, Suite 600 - Dallas, Texas - 75254 (800) 922-8800

[www.siplast.com](http://www.siplast.com)

Rev: 06.15.2023