
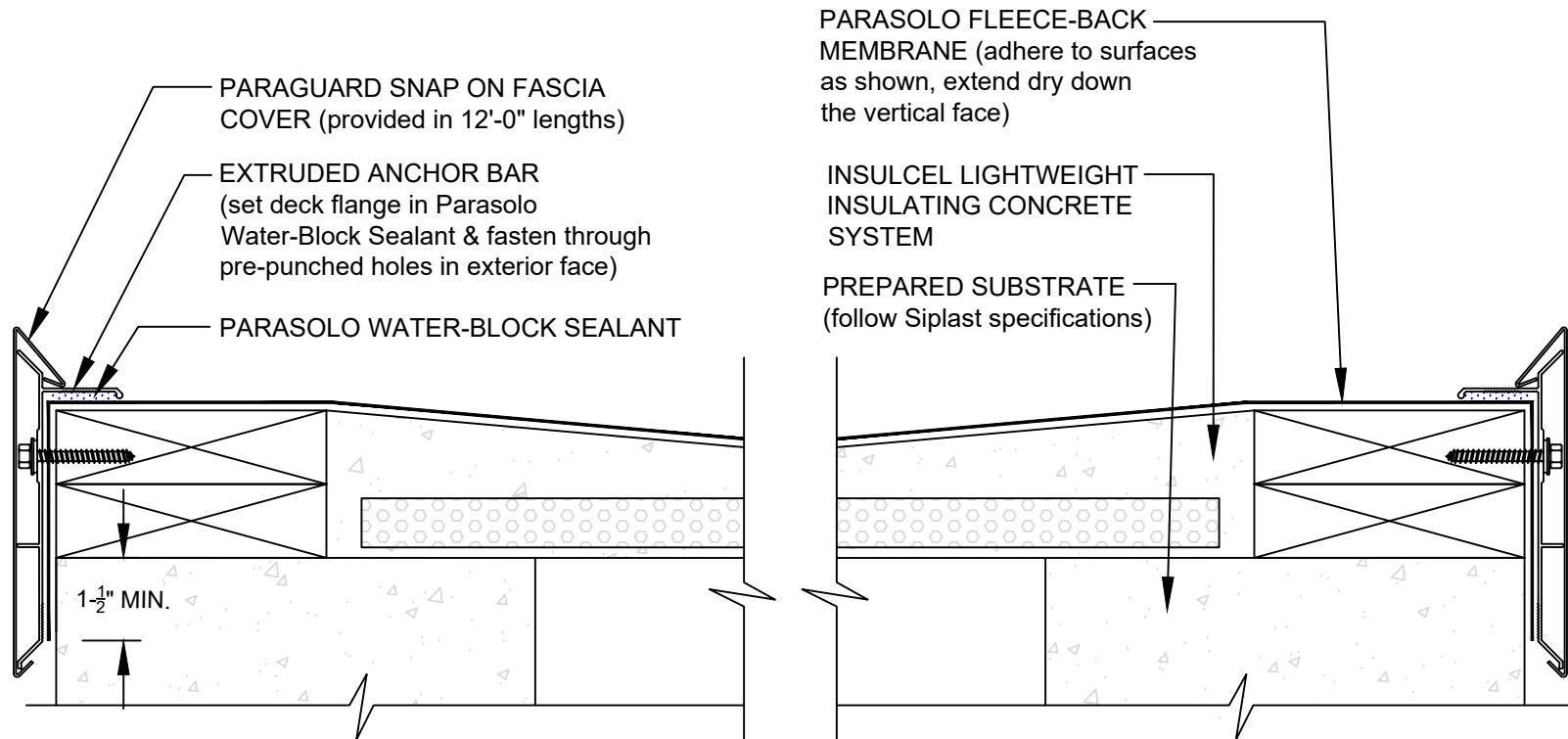


PARAGUARD EXTRUDED EDGE AT SYSTEM WITH PARASOLO FLASHING

PARASOLO FLEECE BACK MEMBRANE - INSULCEL LIGHTWEIGHT INSULATING CONCRETE

LEGEND
 SEALANT



NOTES:

1. FASCIA FASTENERS ARE PROVIDED WITH THE PARAGUARD EXTRUDED EDGE SYSTEM..
2. THE PARAGUARD EXTRUDED EDGE SYSTEM DOES NOT ALLOW FOR DRAINAGE AT THE ROOF EDGE; APPROPRIATE SLOPE SHOULD BE PROVIDED AWAY FROM EDGE AND TOWARDS INTERNAL ROOF DRAINS.
3. REQUIREMENTS AND RECOMMENDATIONS DETAILED IN CURRENT SIPLAST SPECIFICATIONS SHALL APPLY IN ADDITION TO THE ABOVE DRAWING.

Scale: NTS

REF: PGUARD EXTRUDED EDGE - PARASOLO - INSULATED

Detail Number:
DE-6816

14911 Quorum Drive, Suite 600 - Dallas, Texas - 75254 (800) 922-8800

Rev: 06.15.2023

.SIPLAST_LOGO_3C 2004 (1).jpg

www.siplast.com