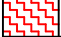

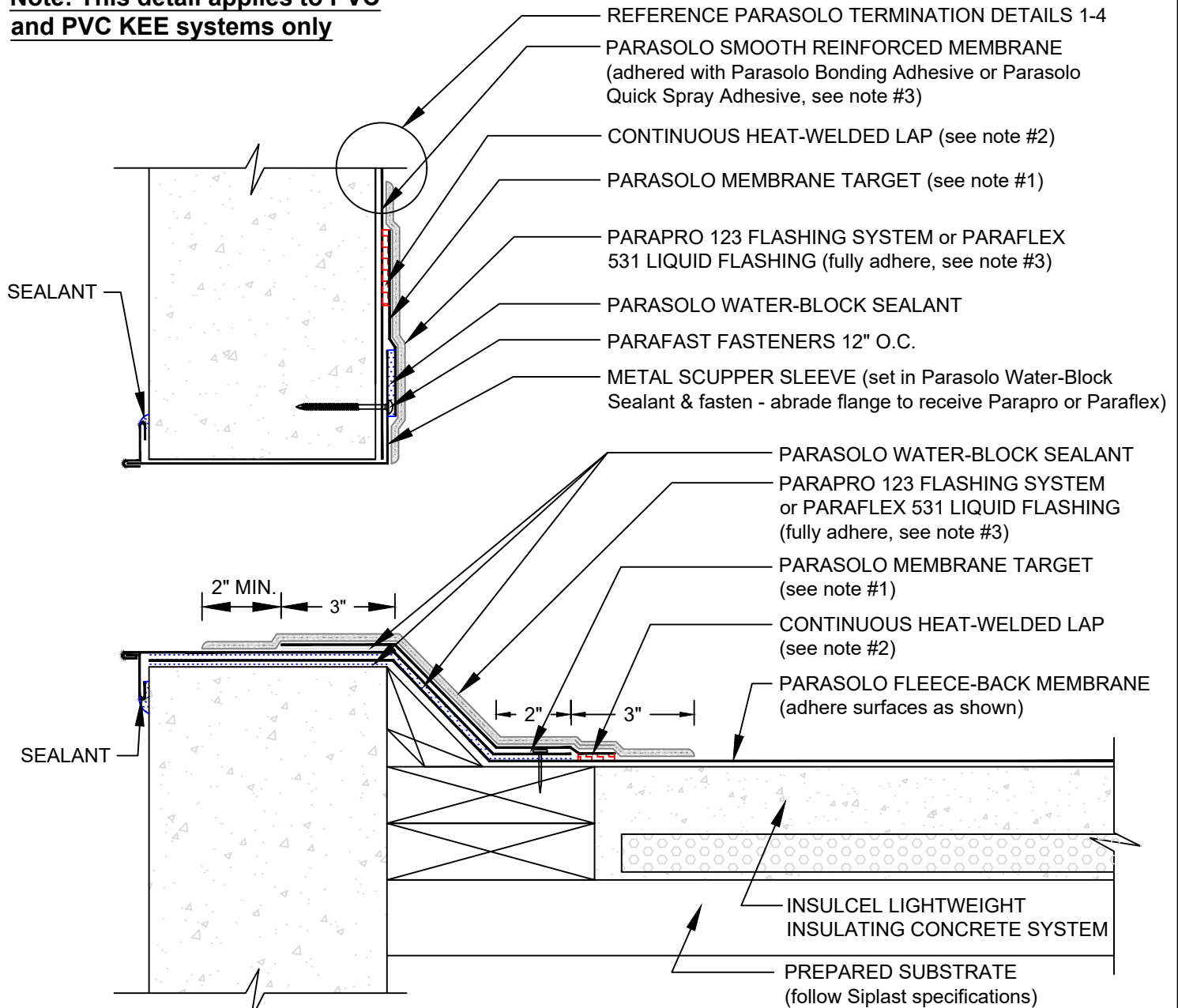


OVERFLOW SCUPPER W/ PARAPRO/PARAFLEX 531 LIQUID FLASHING

PARASOLO FLEECE BACK MEMBRANE -
INSULCEL LIGHTWEIGHT INSULATING CONCRETE

Note: This detail applies to PVC and PVC KEE systems only

LEGEND	
	HEAT WELD
	SEALANT



NOTES:

1. PARASOLO PVC KEE MEMBRANE IS REQUIRED AT LOCATIONS TO RECEIVE PARAFLEX 531 LIQUID FLASHING SYSTEMS.
2. FOR HEAT-WELDING LAPS USE 1" MINIMUM WELD WITH TO 1-1/2" MAXIMUM WELD.
3. REFER TO SIPLAST PREPARATION GUIDELINES FOR PROPER SURFACE TREATMENT OF ALL MATERIALS PRIOR TO APPLICATION OF PARAPRO OR PARAFLEX 531 LIQUID FLASHING MATERIALS.
4. REQUIREMENTS AND RECOMMENDATIONS DETAILED IN CURRENT SIPLAST SPECIFICATIONS SHALL APPLY IN ADDITION TO THE ABOVE DRAWING.
5. PARASOLO BONDING ADHESIVE CAN BE USED UP TO A MAXIMUM FLASHING HEIGHT OF 54 INCHES. ADDITIONAL TERMINATION IS REQUIRED FOR FLASHING HEIGHTS ABOVE 54 INCHES WHEN PARASOLO BONDING ADHESIVE IS USED. CONTACT THE SIPLAST TECHNICAL DEPARTMENT FOR ADDITIONAL INFORMATION.

Scale: NTS

REF: COATED METAL WALL OV. SCUPPER - PARASOLO - INSULATED

Detail Number:
DE-6811



14911 Quorum Drive, Suite 600 - Dallas, Texas - 75254
(800) 922-8800

www.siplast.com

Rev: 06.15.2023