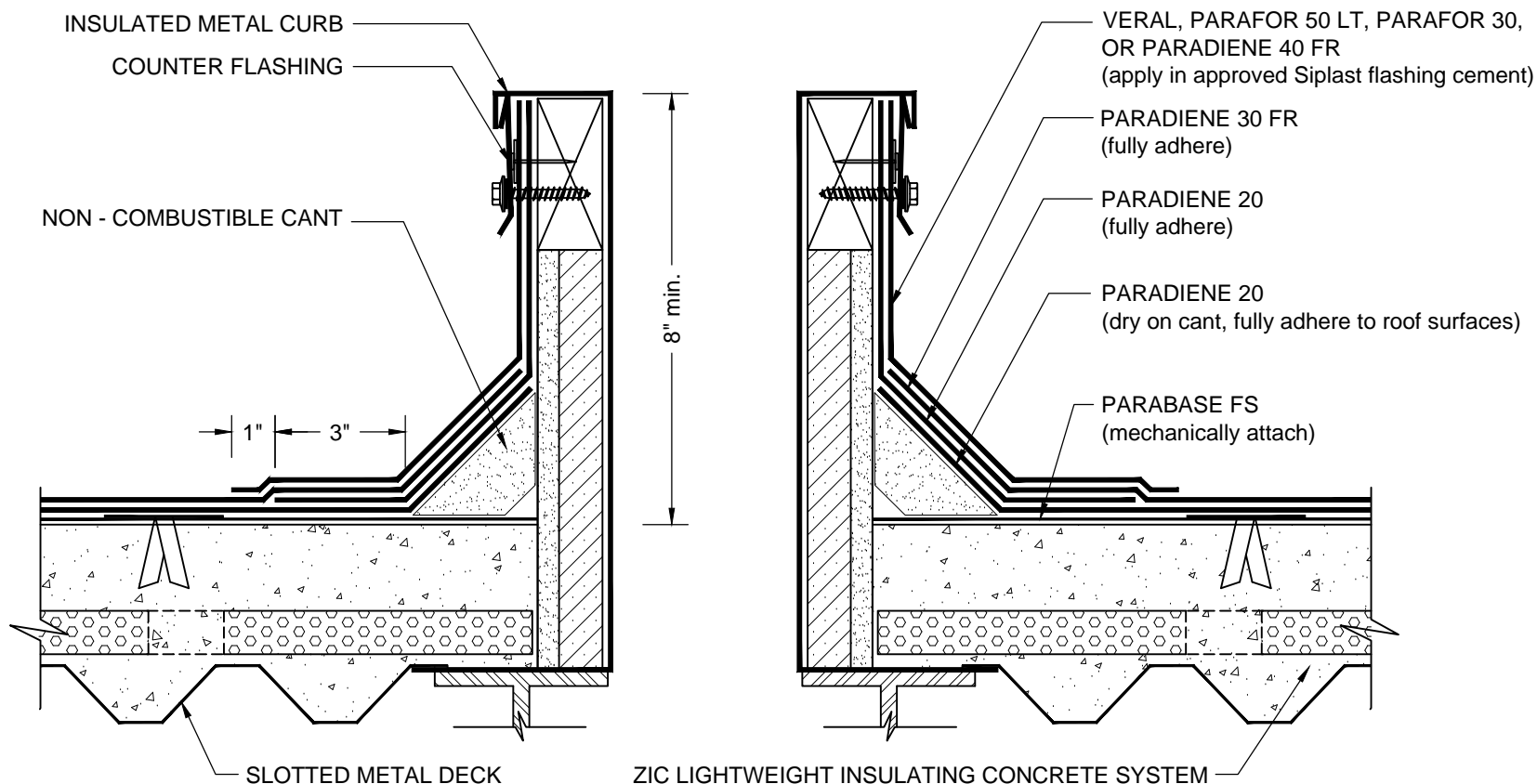


INSULATED CURB with ADHESIVE-APPLIED FLASHING

PARADIENE 20/30 FR - ZIC SUBSTRATE



NOTES:

1. APPLY GRANULE SURFACED FLASHING SHEETS IN PA-828 FLASHING CEMENT OR SFT CEMENT. SFT CEMENT IS REQUIRED FOR VERAL FLASHING SHEETS.
2. THE CARPENTRY AND METAL WORK SHOWN DEPICTS SHOP FABRICATION AND JOB-SITE ASSEMBLY. THESE COMPONENTS SHOULD BE DESIGNED/FABRICATED/INSTALLED ACCORDING TO GENERALLY ACCEPTED INDUSTRY PRACTICES, STANDARDS, AND APPROVALS.
3. DISSIMILAR METAL TYPES SUBJECT TO ELECTROLYTIC REACTION SHOULD BE PHYSICALLY SEPARATED.
4. REQUIREMENTS AND RECOMMENDATIONS DETAILED IN CURRENT SIPLAST SPECIFICATIONS SHALL APPLY IN ADDITION TO THE ABOVE DRAWING.

N.T.S



1000 Rochelle Boulevard - Irving, Texas - 75062 (800) 922-8800 www.siplast.com

Ref: Insulated Curb - 2030 - ZIC - Cold Adh

Rev: 12.9.16