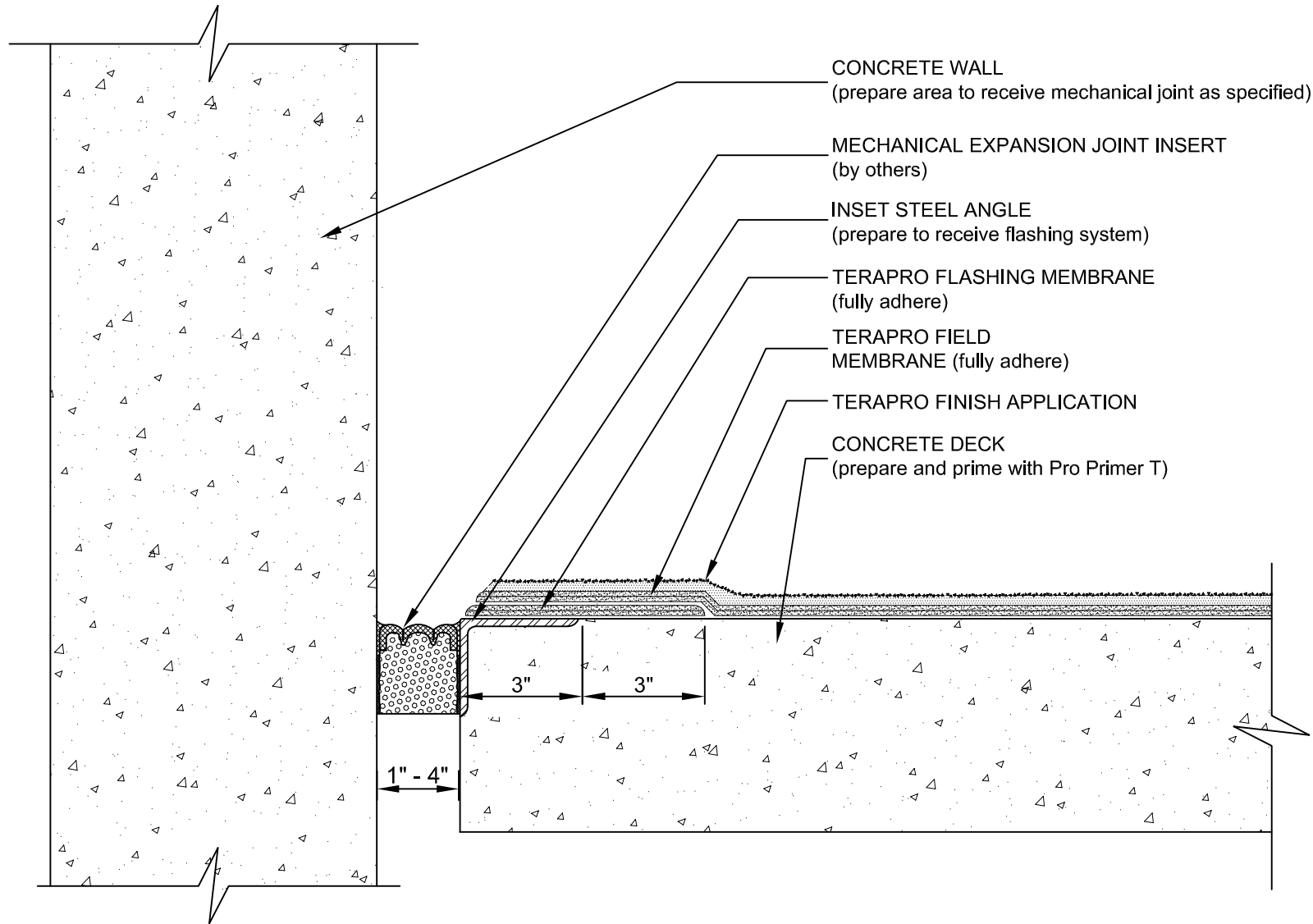


HORIZONTAL TO VERTICAL MECHANICAL EXPANSION JOINT

TERAPRO (REINFORCED) - CONCRETE SUBSTRATE



- NOTES: 1. REFER TO THE SPECIFICATIONS OF THE MECHANICAL EXPANSION JOINT MANUFACTURER FOR APPLICABILITY AND INSTALLATION GUIDELINES.
 2. REFER TO SIPLAST PREPARATION GUIDELINES FOR PROPER SURFACE TREATMENT OF ALL MATERIALS PRIOR TO APPLICATION OF TERAPRO MATERIAL.
 3. REQUIREMENTS AND RECOMMENDATIONS DETAILED IN TERAPRO INSTALLATION SPECIFICATIONS SHALL APPLY IN ADDITION TO THE ABOVE DRAWING.

N.T.S.