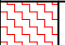


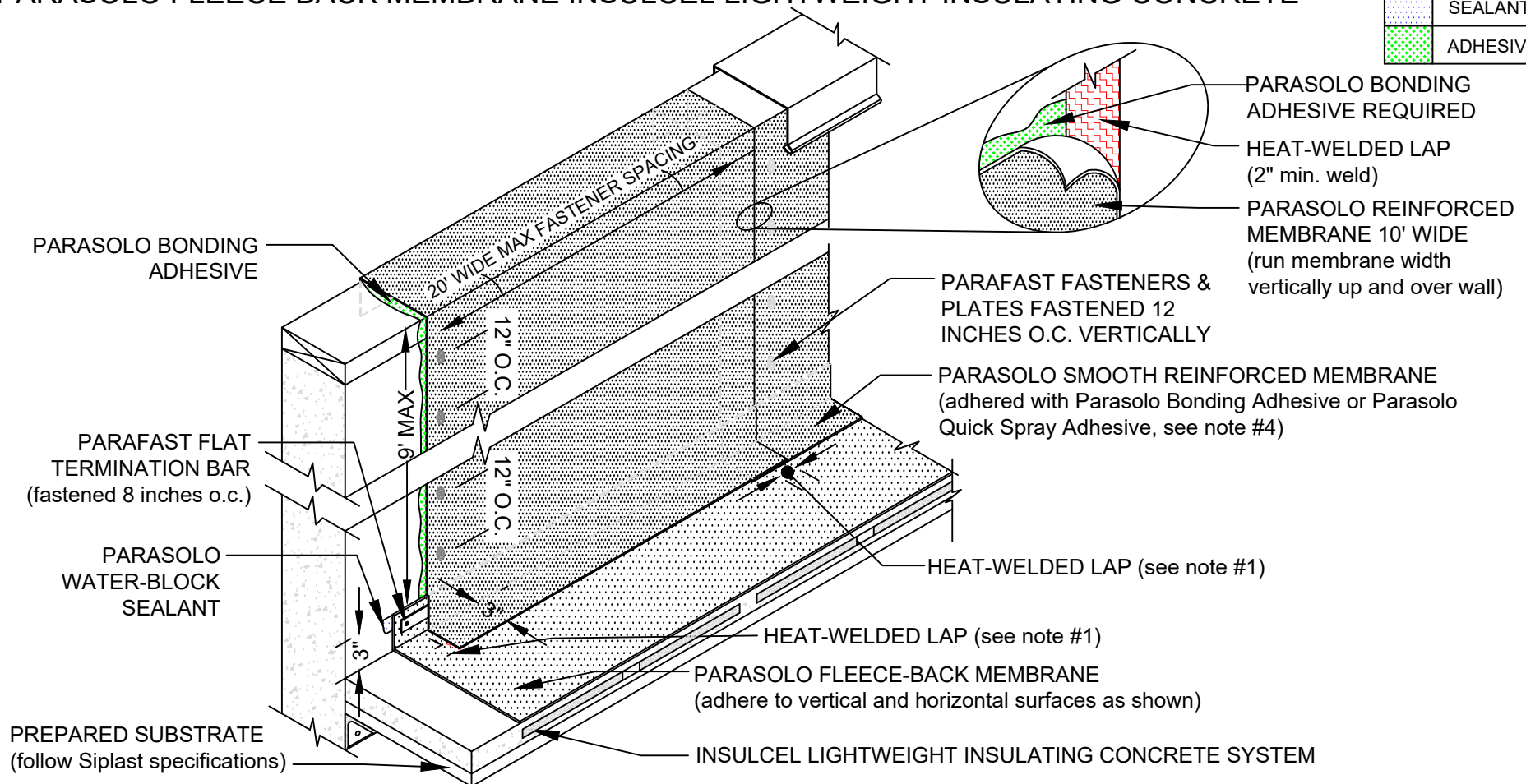


HIGH WALL FLASHING DETAIL 10' WIDE SHEETS

PARASOLO FLEECE BACK MEMBRANE INSULCEL LIGHTWEIGHT INSULATING CONCRETE

LEGEND	
	HEAT WELD
	SEALANT
	ADHESIVE



NOTES:

1. FOR HEAT-WELDING LAPS USE 1" MINIMUM WELD TO 1-1/2" MAXIMUM WELD.
2. REQUIREMENTS AND RECOMMENDATIONS DETAILED IN CURRENT SIPLAST SPECIFICATIONS SHALL APPLY IN ADDITION TO THE ABOVE DRAWING.
3. MAX PARAPET WALL HEIGHT SHOULD BE NO TALLER THAN 9' TO USE A FULL 10' SHEET OF MEMBRANE AS FLASHING.
4. PARASOLO BONDING ADHESIVE CAN BE USED UP TO A MAXIMUM FLASHING HEIGHT OF 54 INCHES. ADDITIONAL TERMINATION IS REQUIRED FOR FLASHING HEIGHTS ABOVE 54 INCHES WHEN PARASOLO BONDING ADHESIVE IS USED. CONTACT THE SIPLAST TECHNICAL DEPARTMENT FOR ADDITIONAL INFORMATION.

Scale: NTS

REF: HIGH WALL FLASHING 10F SHEETS - PARASOLO - INSULCEL

Detail Number:
DE-6837



14911 Quorum Drive, Suite 600 - Dallas, Texas - 75254 (800) 922-8800

www.siplast.com

Rev: 06.15.2023