

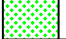
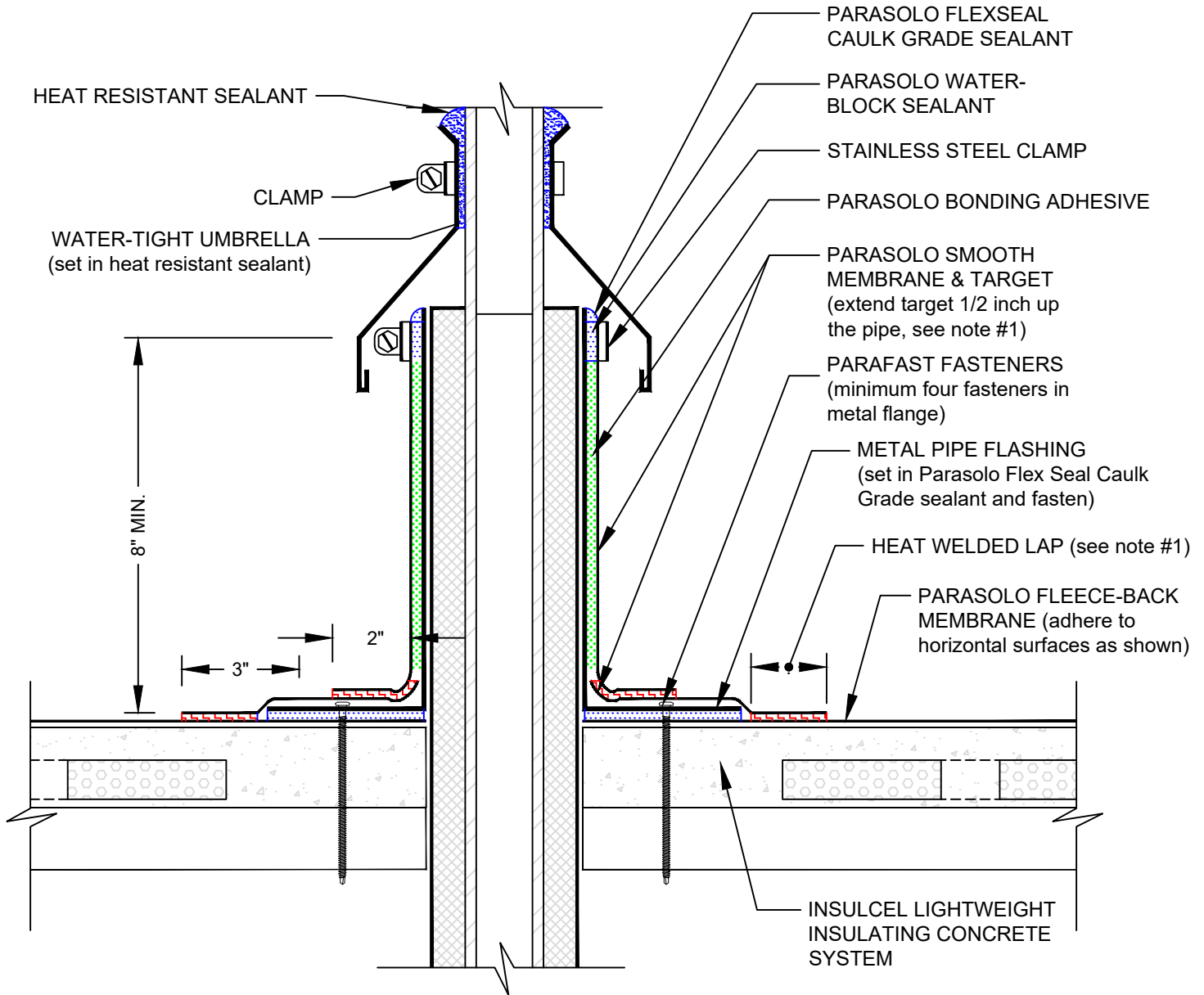


HIGH TEMPERATURE STACK WITH INSULATED THIMBLE AND PARASOLO FLASHING

PARASOLO FLEECE BACK MEMBRANE - INSULCEL LIGHTWEIGHT INSULATING CONCRETE

LEGEND	
	HEAT WELD
	SEALANT
	ADHESIVE



NOTES:

1. FOR HEAT WELDING LAPS USE 1" MINIMUM. WELD TO 1-1/2" MAXIMUM WELD.
2. APPLY HEAT TO UNREINFORCED MEMBRANE AND FORM BY HAND PRIOR TO HOT AIR WELDING.
3. REQUIREMENTS AND RECOMMENDATIONS DETAILED IN CURRENT SIPLAST SPECIFICATIONS SHALL APPLY IN ADDITION TO THE ABOVE DRAWING.

Scale: NTS

REF: HIGH TEMPERATURE STACK - PARASOLO - INSULCEL

14911 Quorum Drive, Suite 600 - Dallas, Texas - 75254

(800) 922-8800

www.siplast.com



Detail Number:
DE-6823

Rev: 06.15.2023