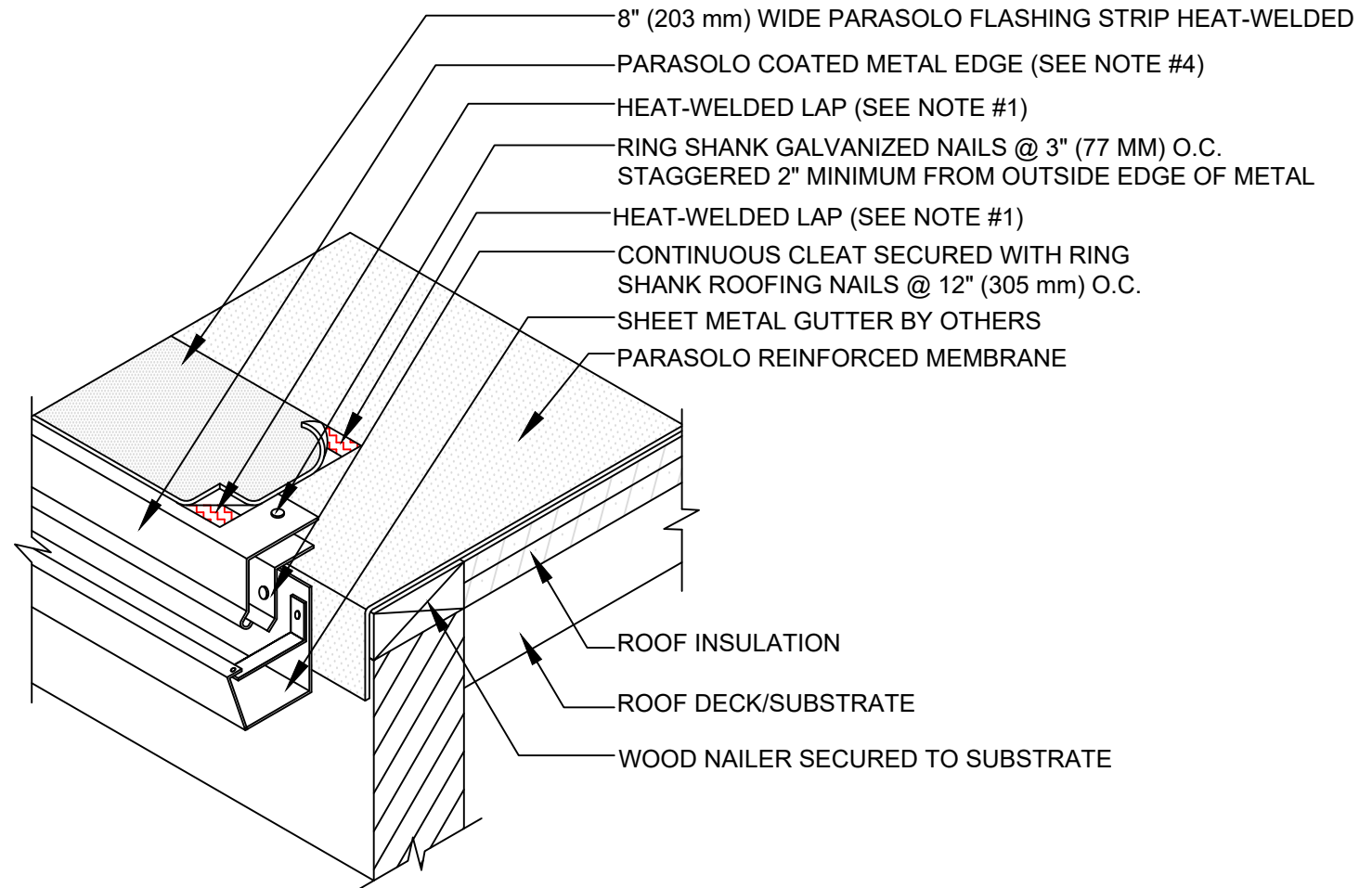


GUTTER WITH COATED METAL EDGE

PARASOLO ROOF MEMBRANE - INSULATED (ALL SYSTEMS)

LEGEND	
	HEAT WELD



NOTES:

1. FOR HEAT-WELDING LAPS USE 1" MINIMUM WELD TO 1-1/2" MAXIMUM WELD.
2. REFER TO PARASOLO ROOF EDGE FOR TREATMENT AT JOINTS.
3. CONTACT THE SIPLAST TECHNICAL DEPARTMENT FOR INFORMATION REGARDING THE APPROPRIATE PROFILES AND GAUGES FOR CLEAT AND PARASOLO METAL.

Scale: NTS

REF: GUTTER WITH COATED METAL EDGE - PARASOLO - INSULATED

Detail Number:
DE-6231



14911 Quorum Drive, Suite 600 - Dallas, Texas - 75254 (800) 922-8800

www.siplast.com

Rev: 06.08.2023