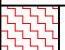
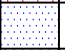

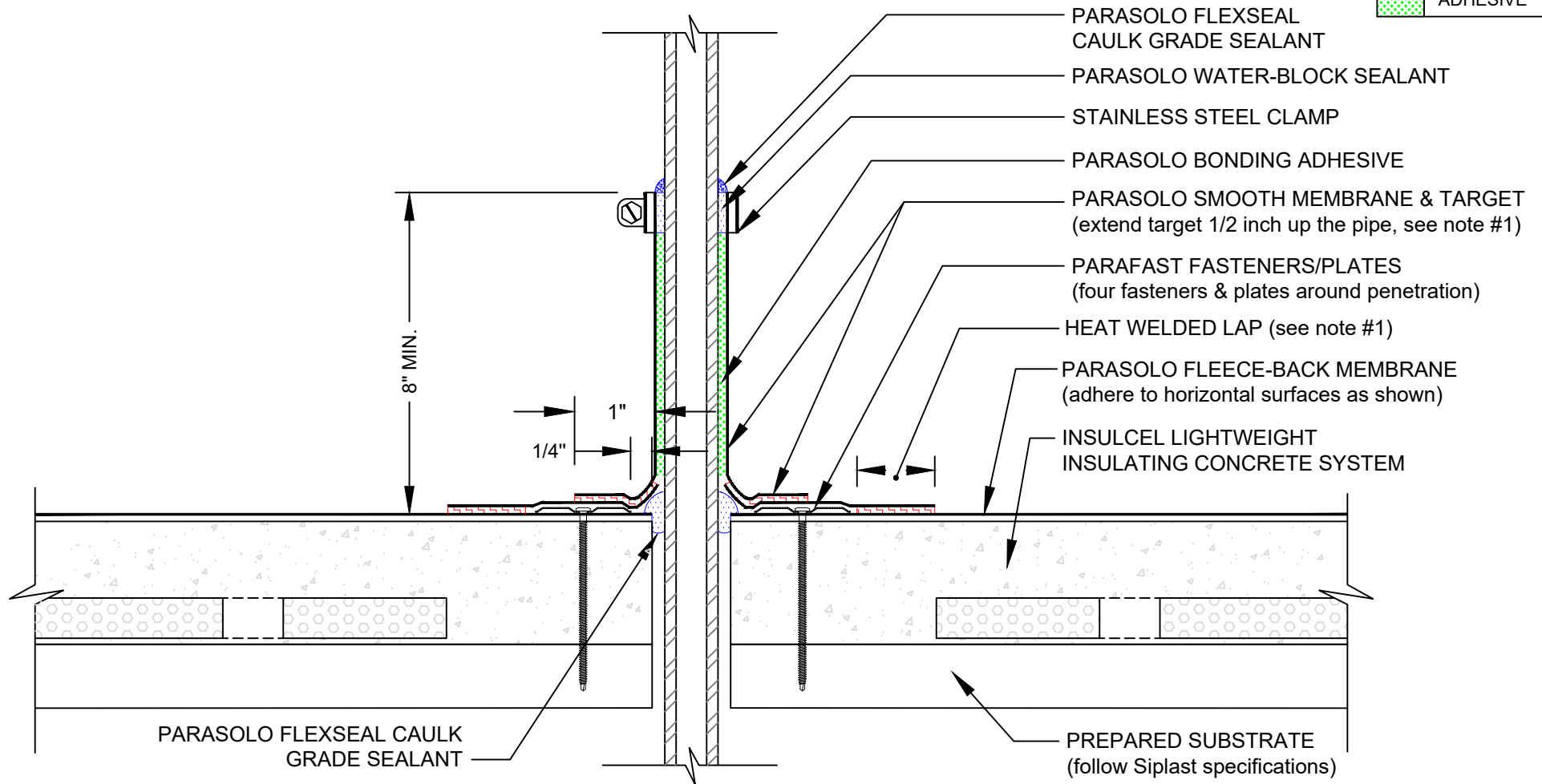


FIELD-WRAPPED PIPE PENETRATION WITH PARASOLO FLASHING

PARASOLO FLEECE BACK MEMBRANE - INSULCEL LIGHTWEIGHT INSULATING CONCRETE

LEGEND	
	HEAT WELD
	SEALANT
	ADHESIVE



NOTES:

1. FOR HEAT-WELDED LAP USE 1" MINIMUM TO 1-1/2" MAXIMUM WELD.
2. REQUIREMENTS AND RECOMMENDATIONS DETAILED IN CURRENT SIPLAST SPECIFICATIONS SHALL APPLY IN ADDITION TO THE ABOVE DRAWING.

Scale: NTS

REF: FIELD WRAPPED PIPE PENETRATION - PARASOLO - INSULCEL

Detail Number:
DE-6820



14911 Quorum Drive, Suite 600 - Dallas, Texas - 75254 (800) 922-8800

www.siplast.com

Rev: 06.15.2023