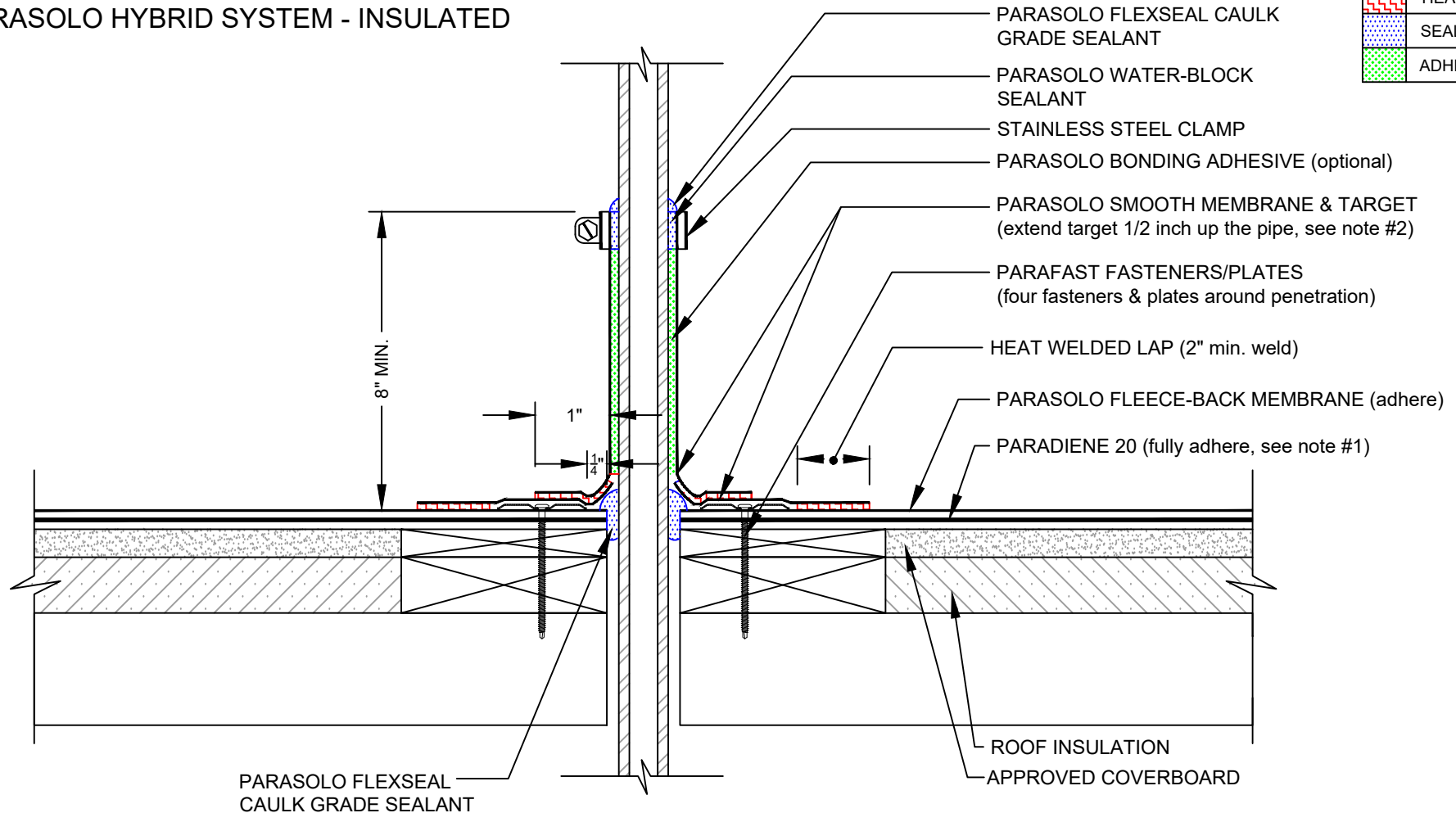


# FIELD WRAPPED PIPE PENETRATION PARASOLO HYBRID SYSTEM - INSULATED



## NOTES:

1. PARADIENE 20 SHOULD BE SEALED USING PARASOLO FLEXSEAL SEALANT FOR EXPOSED PARADIENE IN PHASE CONSTRUCTION INSTALLATIONS.
2. APPLY HEAT TO UNREINFORCED MEMBRANE AND FORM BY HAND PRIOR TO HOT AIR WELDING.
3. REQUIREMENTS AND RECOMMENDATIONS DETAILED IN CURRENT SIPLAST SPECIFICATIONS SHALL APPLY IN ADDITION TO THE ABOVE DRAWING.

CAUTION: SIPLAST RECOMMENDS THAT ALL PRACTICES PERTAINING TO INDUSTRY STANDARD TORCH SAFETY REQUIREMENTS AND GUIDELINES BE FOLLOWED. THIS INCLUDES PERFORMING A FIRE WATCH FOLLOWING ANY TORCH APPLICATIONS. ALWAYS HAVE APPROVED FIRE EXTINGUISHING EQUIPMENT NEARBY WHEN USING A TORCH.

Scale: NTS

REF: FIELD WRAPPED PIPE PENETRATION - PARASOLO - P20 - INSULATED

Detail Number:  
DE-6416



14911 Quorum Drive, Suite 600 - Dallas, Texas - 75254 (800) 922-8800

[www.siplast.com](http://www.siplast.com)

Rev: 06.06.2023