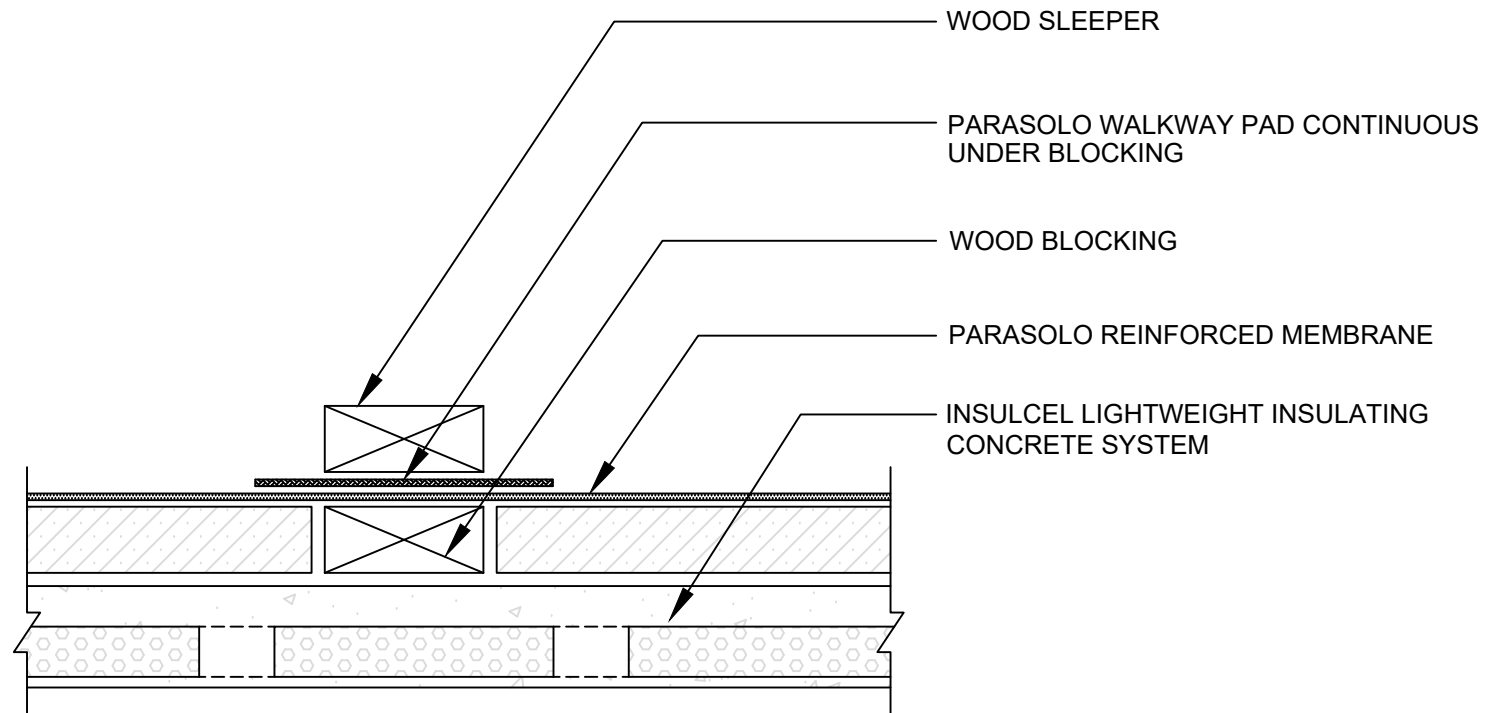


# EXPOSED WOOD EQUIPMENT SUPPORT SLEEPER WITH PARASOLO FLASHING PARASOLO FLEECE BACK MEMBRANE



## NOTES:

1. IF THE INSULATION COMPRESSIVE STRENGTH IS INSUFFICIENT FOR THE EQUIPMENT WEIGHT, INSTALL WOOD BLOCKING UNDER THE EQUIPMENT CARRYING WOOD SLEEPER, MATCHING THE HEIGHT OF THE INSULATION.
2. THE CARPENTRY AND METAL WORK SHOWN DEPICTS SHOP FABRICATION AND JOB-SITE ASSEMBLY. THESE COMPONENTS SHOULD BE DESIGNED/FABRICATED/INSTALLED ACCORDING TO GENERALLY ACCEPTED INDUSTRY PRACTICES, STANDARDS, AND APPROVALS.

Scale: NTS

REF: EXPOSED WOOD EQUIPMENT SUPPORT SLEEPER - PARASOLO - INSULCEL

Detail Number:  
DE-6847



14911 Quorum Drive, Suite 600 - Dallas, Texas - 75254 (800) 922-8800

[www.siplast.com](http://www.siplast.com)

Rev: 06.15.2023