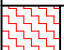


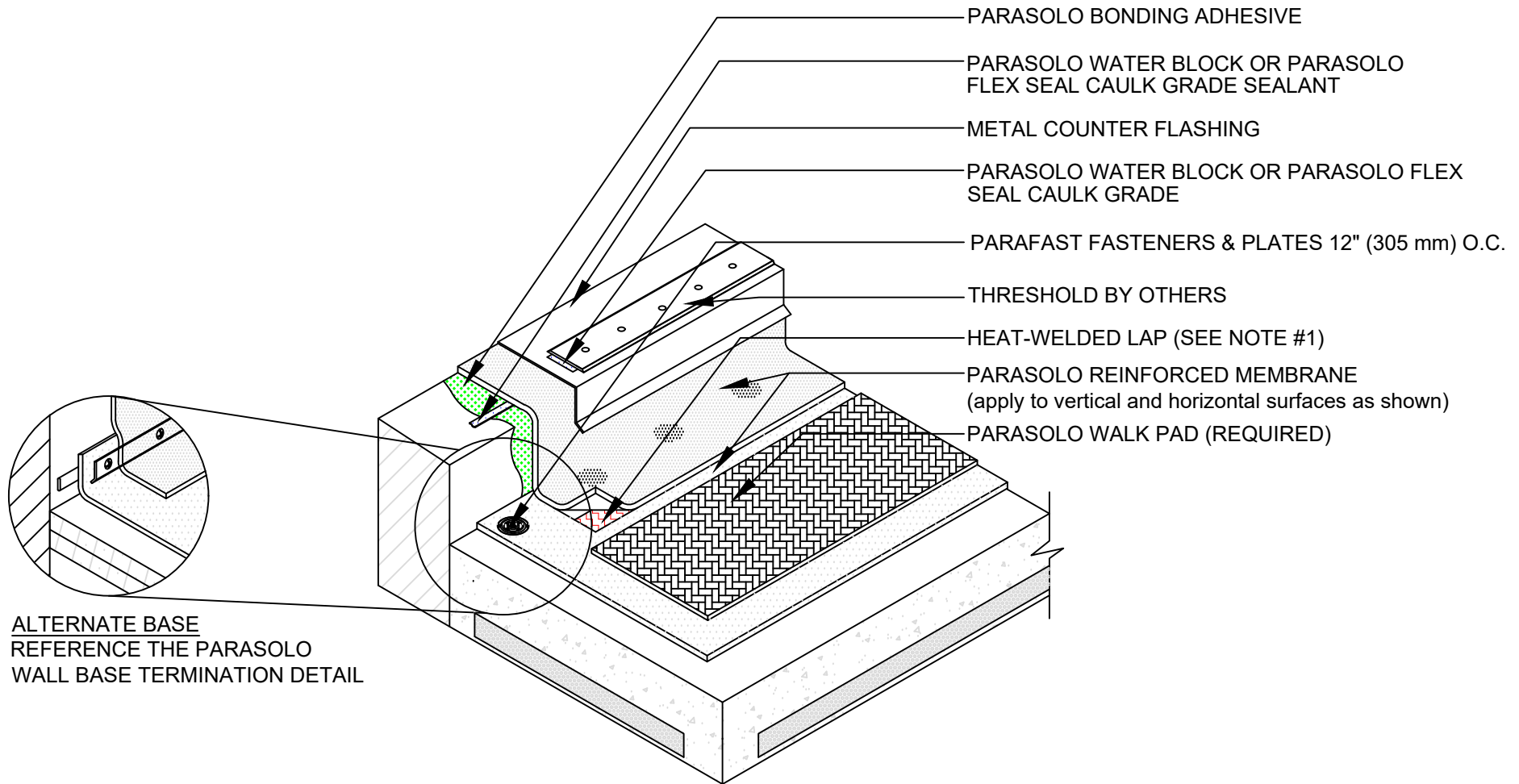


DOOR THRESHOLD FLASHING DETAIL WITH PARASOLO FLASHING

PARASOLO FLEECE BACK MEMBRANE INSULCEL LIGHTWEIGHT INSULATING CONCRETE

LEGEND	
	HEAT WELD
	SEALANT
	ADHESIVE



ALTERNATE BASE
REFERENCE THE PARASOLO
WALL BASE TERMINATION DETAIL

NOTES:

1. FOR HEAT-WELDING LAPS USE 1" MINIMUM WELD TO 1-1/2" MAXIMUM WELD.
2. FOR HEIGHTS LESS THAN 8" (203 MM) CONTACT SIPLAST FOR MORE INFORMATION.

Scale: NTS

REF: DOOR THRESHOLD - PARASOLO - INSULCEL

Detail Number:
DE-6846



14911 Quorum Drive, Suite 600 - Dallas, Texas - 75254 (800) 922-8800

www.siplast.com

Rev: 06.15.2023