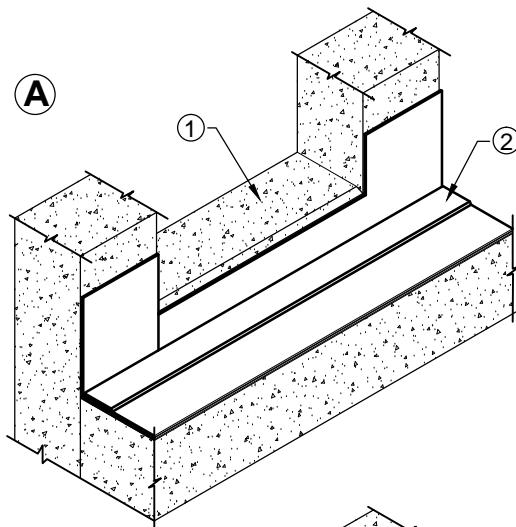


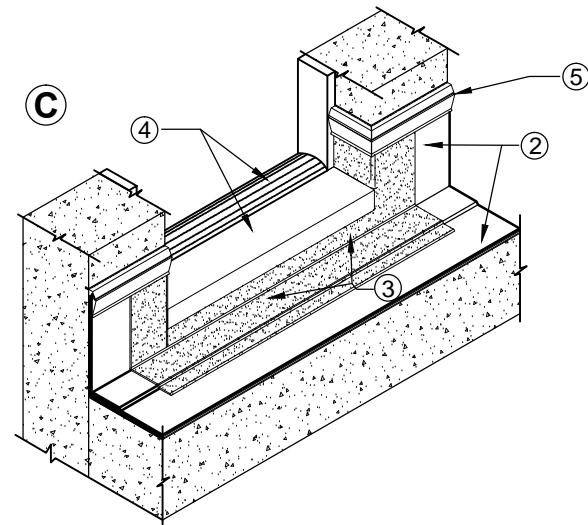
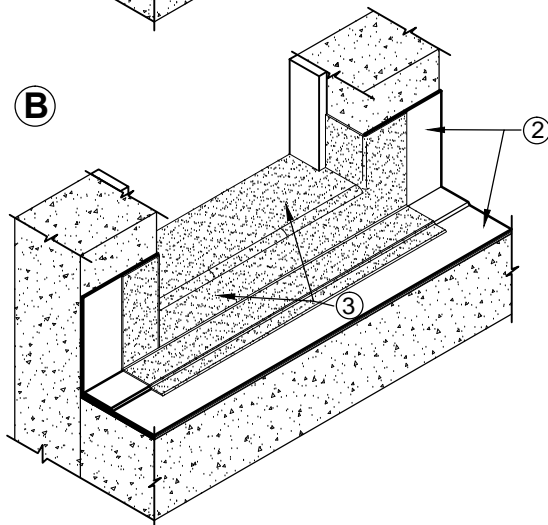
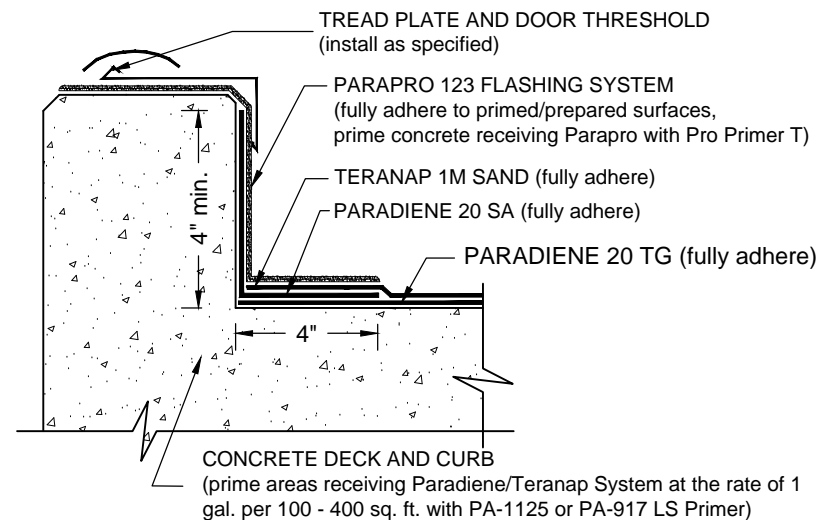
DOOR SILL FLASHING WITH PARAPRO 123 FLASHING

TERANAP - CONCRETE SUBSTRATE
SHOWN WITHOUT OVERBURDEN COMPONENTS

SIDE PROFILE



1. CONCRETE DOOR SILL (prepare and prime surface with Pro Primer W where applying Parapro Flashing Resin direct to concrete)
2. TERANAP SYSTEM (refer to Siplast Teranap 1M Sand/Paradiene 20 TG over concrete substrate detail set for correct ply configuration & see note #3 below)
3. PARAPRO FLASHING (fully adhere to prepared surfaces, apply a minimum 3 inches over Teranap System and extend to the top of the flashing sheet, see note #3)
4. TREAD PLATE AND DOOR THRESHOLD (install as specified)
5. COUNTER FLASHING (as specified)



NOTES:

1. CONSULT TERANAP SPECIFICATION PLATES FOR OVERBURDEN/PROTECTION SYSTEM OPTIONS.
2. REFER TO SIPLAST PREPARATION GUIDELINES FOR PROPER SURFACE TREATMENT OF ALL MATERIALS PRIOR TO APPLICATION OF PARAPRO MATERIALS. PARAPRO CANNOT BE APPLIED IN THE ABOVE CONFIGURATION OVER MEMBRANES OR OTHER MATERIALS CONTAINING UNCURED, SOLVENT-BASED MATERIALS. CONTACT SIPLAST FOR FURTHER INFORMATION.
3. PARAPRO FLASHING MEMBRANE CANNOT BE APPLIED TO A TERANAP FILM SURFACE MEMBRANE. ON PROJECTS WHERE A TERANAP FILM SURFACE MEMBRANE IS USED FOR FIELD AND FLASHING APPLICATIONS, INSTALL A TARGET SHEET OF PARADIENE 20 TG, PARAFOR 50 TG OR TERANAP 1M SAND OVER THE TERANAP FILM SURFACE IN ALL AREAS TO RECEIVE DIRECT APPLICATION OF PARAPRO FLASHING MEMBRANE.
4. REQUIREMENTS AND RECOMMENDATIONS DETAILED IN CURRENT SIPLAST SPECIFICATIONS AND THE PARAPRO 123 FLASHING SYSTEM INSTALLER'S GUIDE SHALL APPLY IN ADDITION TO THE ABOVE DRAWING.

CAUTION: SIPLAST RECOMMENDS THAT ALL PRACTICES PERTAINING TO NRCA CERTA GUIDELINES BE FOLLOWED WHEN TORCHING METHODS ARE EMPLOYED. THIS INCLUDES PERFORMING A FIRE WATCH FOLLOWING ANY TORCH APPLICATIONS. ALWAYS HAVE APPROVED FIRE-EXTINGUISHING EQUIPMENT NEARBY.

N.T.S



1000 Rochelle Boulevard - Irving, Texas - 75062 (800) 922-8800 www.siplast.com

Ref: Door Curb - Teranap - Concrete - Ppro

Rev: 01.27.17