

TERANAP - CONCRETE SUBSTRATE SHOWN WITHOUT OVERBURDEN COMPONENTS

TREAD PLATE AND DOOR THRESHOLD
 (install as specified)

PARAFLEX 531 LIQUID FLASHING
 (fully adhere to qualified & prepared masonry surfaces)

TERANAP 1M SAND (fully adhere, see note #2)

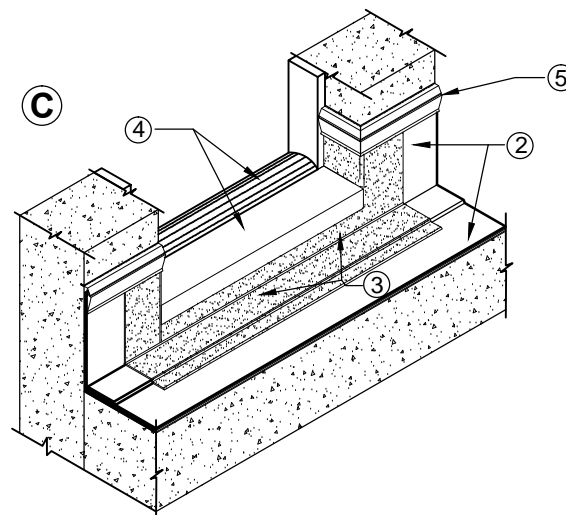
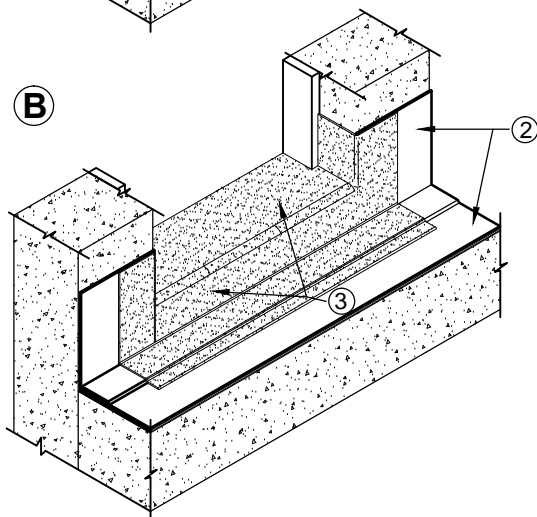
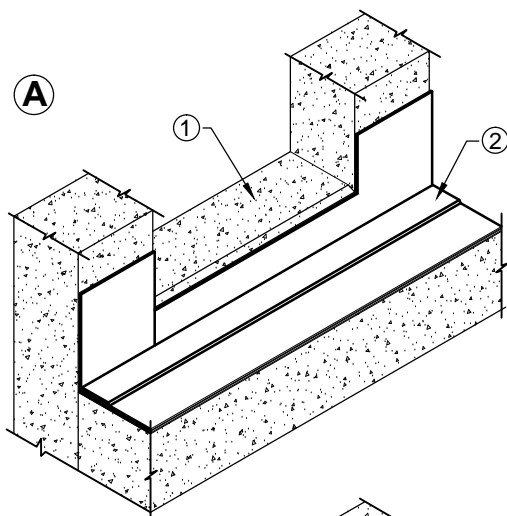
PARADIENE 20 SA (fully adhere)

PARADIENE 20 TG (fully adhere)

4" min.

4"

CONCRETE DECK AND CURB
 (prime areas receiving Paradiene/Teranap System at the rate of 1 gal. per 100 - 400 sq. ft. with PA-1125 or PA-917 LS Primer)



1. REFER TO SIPLAST PREPARATION GUIDELINES FOR PROPER SURFACE TREATMENT OF ALL MATERIALS PRIOR TO APPLICATION OF PARAFLEX FLASHING MATERIALS.
2. PARAFLEX 531 LIQUID FLASHING CANNOT BE APPLIED TO A TERANAP FILM SURFACE MEMBRANE. ON PROJECTS WHERE A TERANAP FILM SURFACE MEMBRANE IS USED FOR FIELD AND FLASHING APPLICATIONS, INSTALL A TARGET SHEET OF PARADIENE 20 TG, PARAFOR 50 TG OR TERANAP 1M SAND OVER THE TERANAP 1M FILM IN ALL AREAS TO RECEIVE DIRECT APPLICATION OF PARAFLEX 531 LIQUID FLASHING.
3. PARAFLEX CANNOT BE APPLIED IN THE ABOVE CONFIGURATION OVER MEMBRANES OR OTHER MATERIALS CONTAINING UNCURED, SOLVENT-BASED MATERIALS. CONTACT SIPLAST FOR FURTHER INFORMATION.
4. PRIME THE PARADIENE/TERANAP 1M SAND SHEETS USING PRO PRIMER AC TO MAINTAIN A CONSISTENT AESTHETIC APPEARANCE OF THE FINISHED PARAFLEX SYSTEM.
5. CONSULT TERANAP SPECIFICATION PLATES FOR OVERBURDEN/PROTECTION SYSTEM OPTIONS.
6. REQUIREMENTS AND RECOMMENDATIONS DETAILED IN CURRENT SIPLAST SPECIFICATIONS AND THE PARAFLEX 531 LIQUID FLASHING INSTALLERS GUIDE SHALL APPLY IN ADDITION TO THE ABOVE DRAWING.

N.T.S