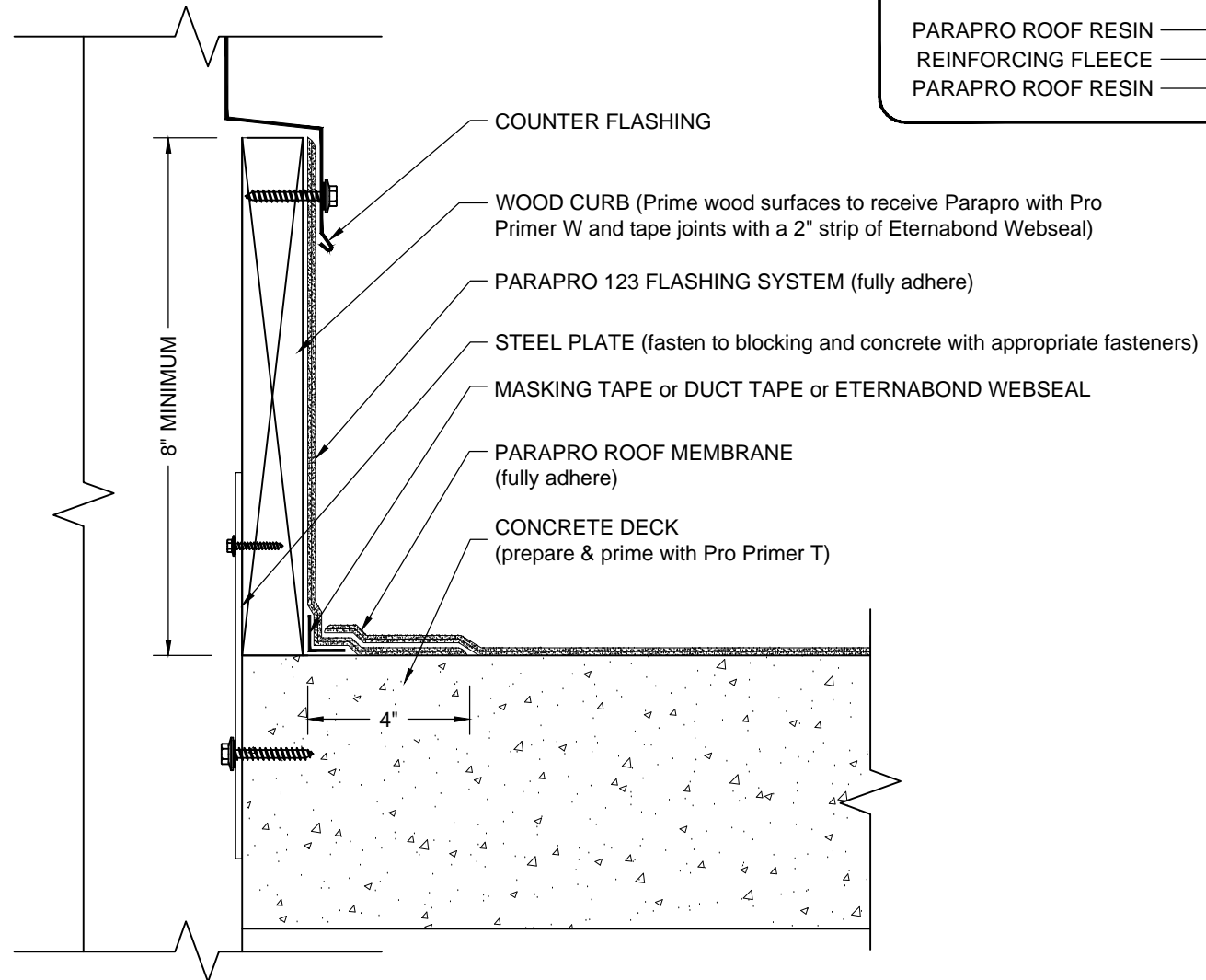


CURB FLASHING (wood curb)

PARAPRO ROOF MEMBRANE - CONCRETE SUBSTRATE



NOTES:

1. REFER TO SIPLAST PREPARATION GUIDELINES FOR PROPER SURFACE PREPARATION OF ALL SUBSTRATES PRIOR TO APPLICATION OF PARAPRO MATERIALS.
2. REQUIREMENTS AND RECOMMENDATIONS DETAILED IN CURRENT SIPLAST SPECIFICATIONS AND THE PARAPRO ROOF SYSTEM INSTALLER'S GUIDE SHALL APPLY IN ADDITION TO THE ABOVE DRAWING.

N.T.S



1000 Rochelle Boulevard - Irving, Texas - 75062 (800) 922-8800 www.siplast.com

Ref: Curb - Ppro - Concrete

Rev: 12.8.18