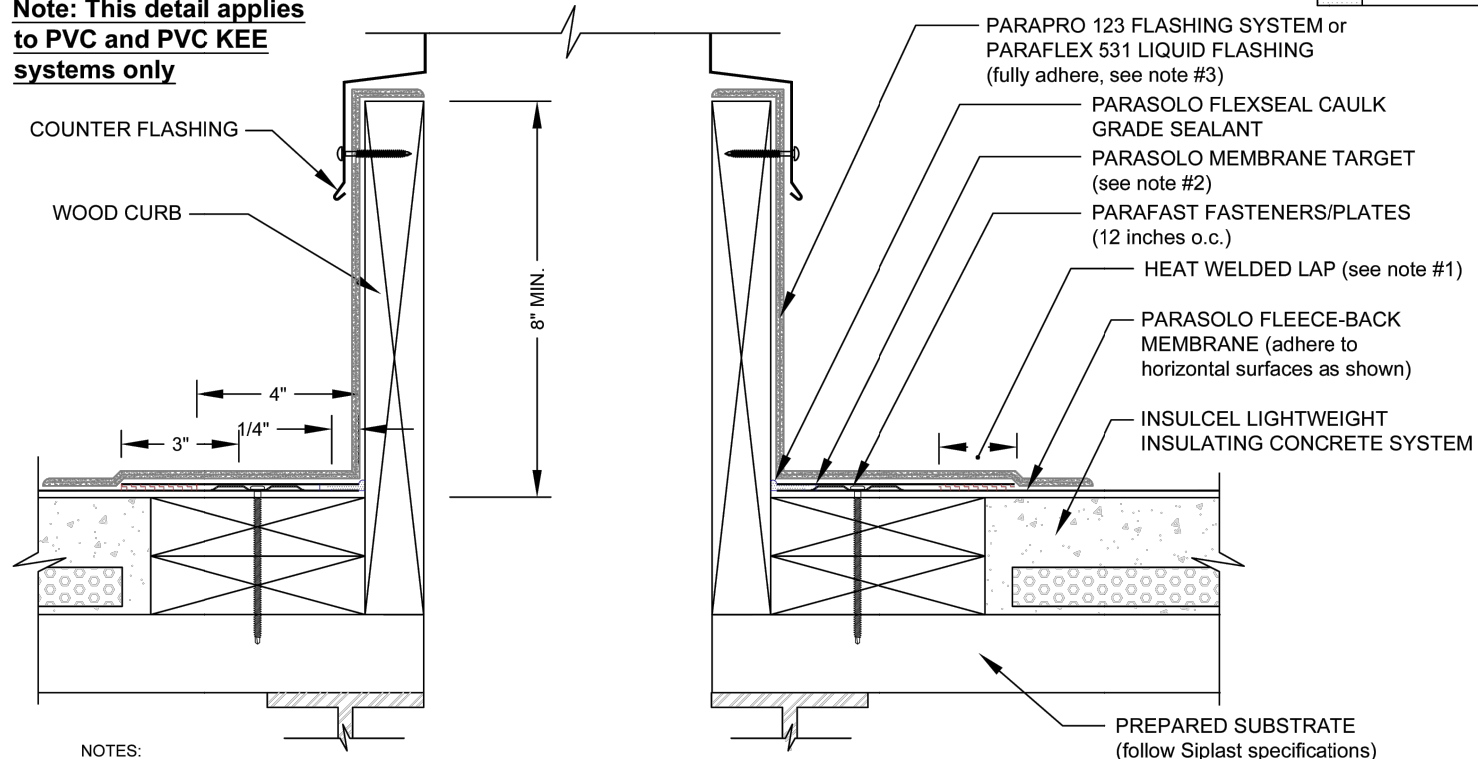


CURB WITH PARAPRO/PARAFLEX 531 LIQUID FLASHING PARASOLO ROOF MEMBRANE - INSULCEL LIGHTWEIGHT INSULATING CONCRETE

**Note: This detail applies
to PVC and PVC KEE
systems only**



NOTES:

1. FOR HEAT-WELDING LAPS USE 1" MINIMUM WELD TO 1-1/2" MAXIMUM WELD.
2. PARASOLO PVC KEE MEMBRANE IS REQUIRED AT LOCATIONS TO RECEIVE PARAFLEX 531 LIQUID FLASHING SYSTEMS.
3. REFER TO SIPLAST PREPARATION GUIDELINES FOR PROPER SURFACE TREATMENT OF ALL MATERIALS PRIOR TO APPLICATION OF PARAPRO OR PARAFLEX 531 LIQUID FLASHING MATERIALS.
4. REQUIREMENTS AND RECOMMENDATIONS DETAILED IN CURRENT SIPLAST SPECIFICATIONS SHALL APPLY IN ADDITION TO THE ABOVE DRAWING.

Scale: NTS

REF: CURB - PARASOLO - INSULATED



14911 Quorum Drive, Suite 600 - Dallas, Texas - 75254 (800) 922-8800

www.siplast.com

Detail Number:
DE-6803

Rev: 06.08.2023

For full size PDF or DWG drawing go to siplast.com and type the detail number in the search bar.

[Return to Master Table of Contents](#)

[Return to LWIC Details Table of Contents](#)