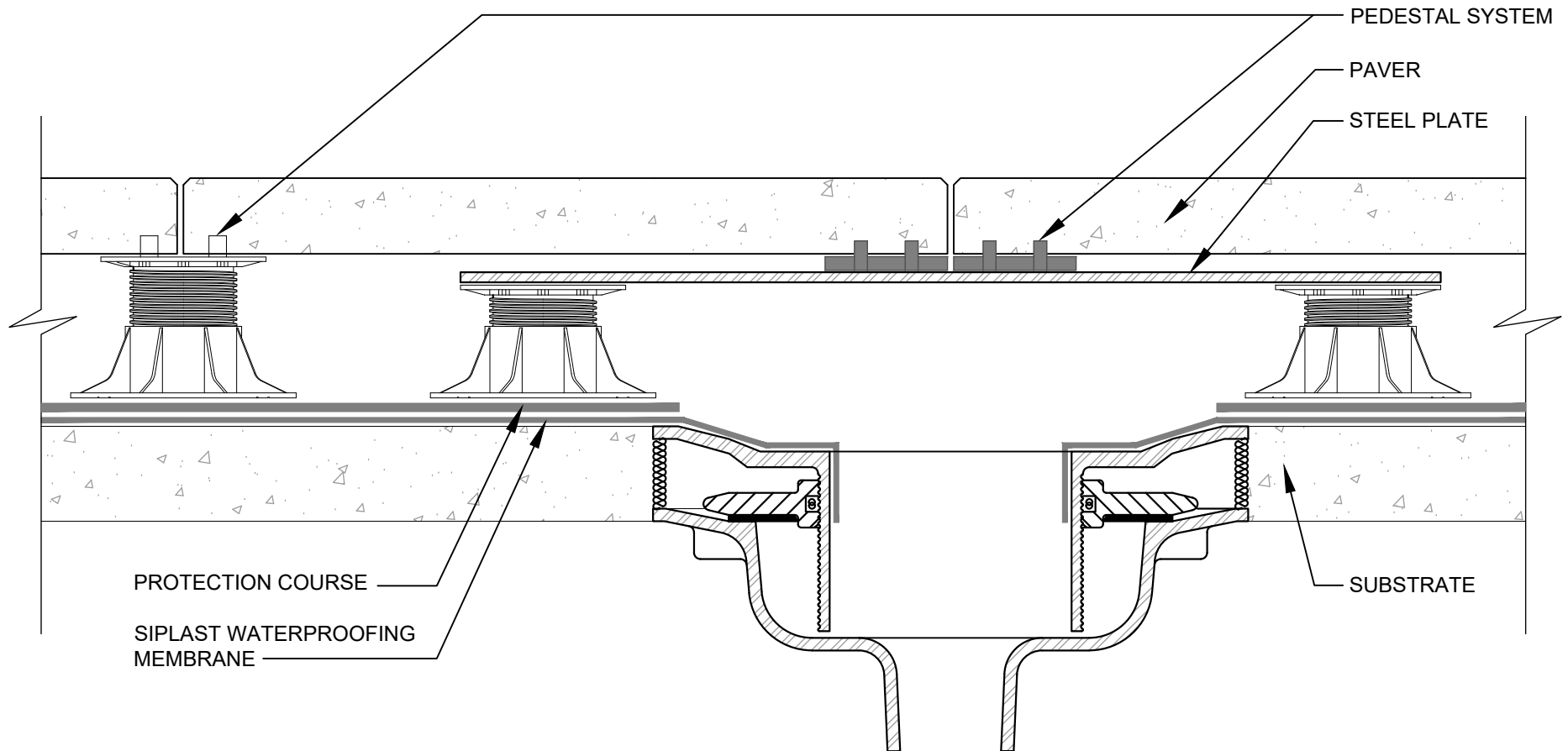


# STEEL PLATE OVER ROOF DRAIN CONCRETE PAVERS - UNINSULATED



## NOTES:

1. REQUIREMENTS AND RECOMMENDATIONS DETAILED IN CURRENT SIPLAST SPECIFICATIONS AND SYSTEM SPECIFIC DETAILS SHALL APPLY IN ADDITION TO THE ABOVE DRAWING.
2. DESIGNER OF RECORD TO VERIFY CAPACITY OF DECK/SUBSTRATE TO ACCOMMODATE LOAD OF THE OVERBURDEN COMPONENTS.

CAUTION: SIPLAST RECOMMENDS THAT ALL PRACTICES PERTAINING TO INDUSTRY STANDARD TORCH SAFETY REQUIREMENTS AND GUIDELINES BE FOLLOWED. THIS INCLUDES PERFORMING A FIRE WATCH FOLLOWING ANY TORCH APPLICATIONS. ALWAYS HAVE APPROVED FIRE EXTINGUISHING EQUIPMENT NEARBY WHEN USING A TORCH.

Scale: NTS

REF: STEEL PLATE OVER ROOF DRAIN - CONCRETE PAVERS - UNINSULATED

Detail Number:  
DE-7405L1



14911 Quorum Drive, Suite 600 - Dallas, Texas - 75254 (800) 922-8800

[www.siplast.com](http://www.siplast.com)

Rev: 05.09.2024