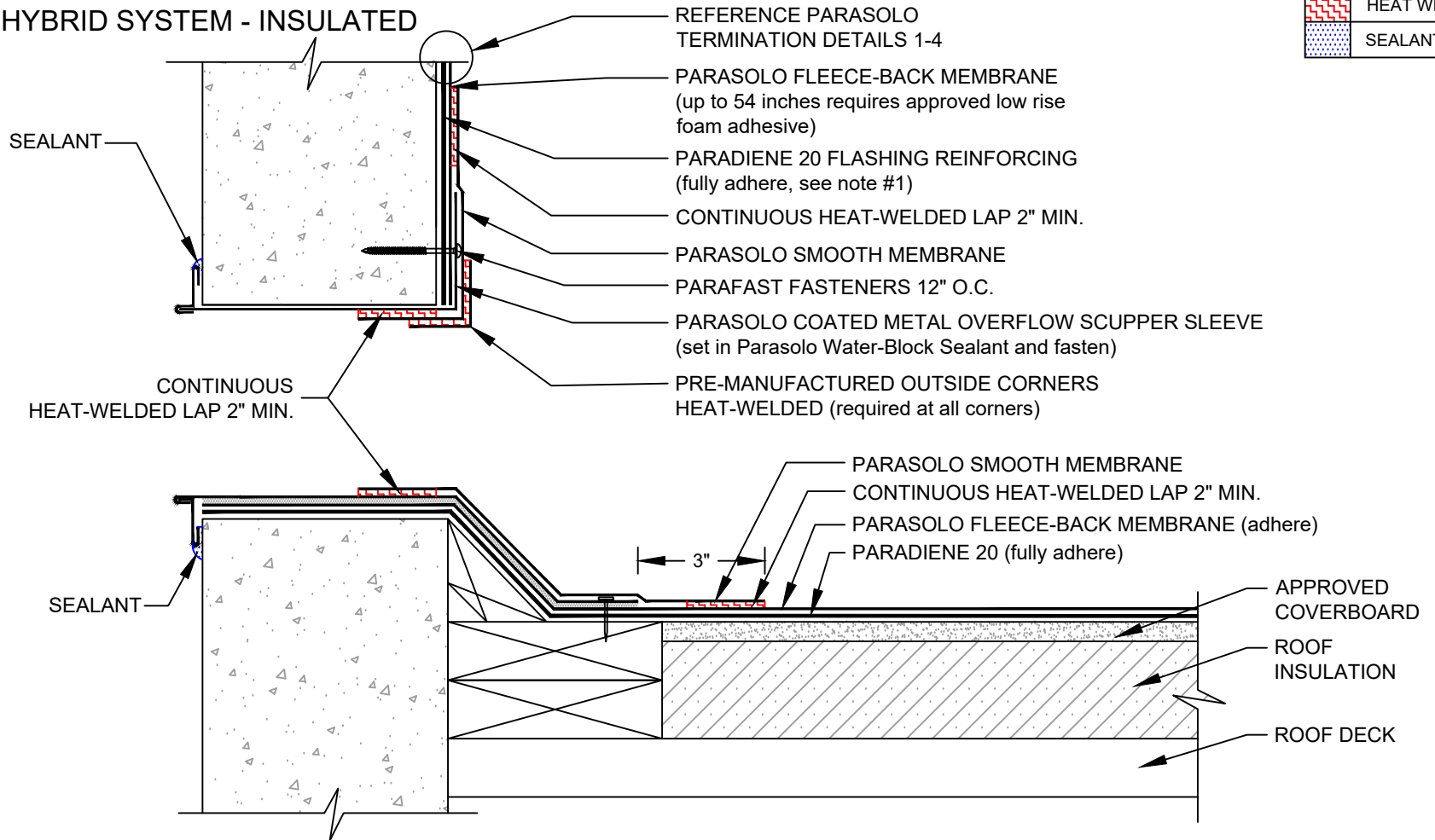


COATED METAL OVERFLOW SCUPPER PARASOLO HYBRID SYSTEM - INSULATED



NOTES:

1. PARADIENE 20 FLASHING REINFORCING IS REQUIRED FOR EXPOSED PARADIENE IN LONG-TERM PHASE-CONSTRUCTION OR FOR SPECIAL GUARANTEE REQUIREMENTS. THE PARADIENE 20 IS OPTIONAL IN STANDARD NON-PHASE CONSTRUCTION APPLICATIONS.
2. WHERE FLASHING REINFORCING IS INDICATED TO MAINTAIN PROPER ADHESION, TA-119 PRIMER IS REQUIRED FOR ALL PARADIENE 20 SA FLASHING REINFORCING AND STRIPPING PLY APPLICATIONS. USE PA-1125 OR PA-917 LS PRIMER FOR ALL OTHER PARADIENE 20 SERIES PRODUCTS THAT ARE NOT SELF-ADHESIVE SHEETS. CONTACT SIPLAST FOR SPECIFIC REQUIREMENTS.
3. REQUIREMENTS AND RECOMMENDATIONS DETAILED IN CURRENT SIPLAST SPECIFICATIONS SHALL APPLY IN ADDITION TO THE ABOVE DRAWING.

CAUTION: SIPLAST RECOMMENDS THAT ALL PRACTICES PERTAINING TO INDUSTRY STANDARD TORCH SAFETY REQUIREMENTS AND GUIDELINES BE FOLLOWED. THIS INCLUDES PERFORMING A FIRE WATCH FOLLOWING ANY TORCH APPLICATIONS. ALWAYS HAVE APPROVED FIRE EXTINGUISHING EQUIPMENT NEARBY WHEN USING A TORCH.

Scale: NTS

REF: COATED METAL WALL SCUPPER - PARASOLO - P20 - INSULATED

Detail Number:
DE-6411

Rev: 06.06.2023



14911 Quorum Drive, Suite 600 - Dallas, Texas - 75254 (800) 922-8800

www.siplast.com