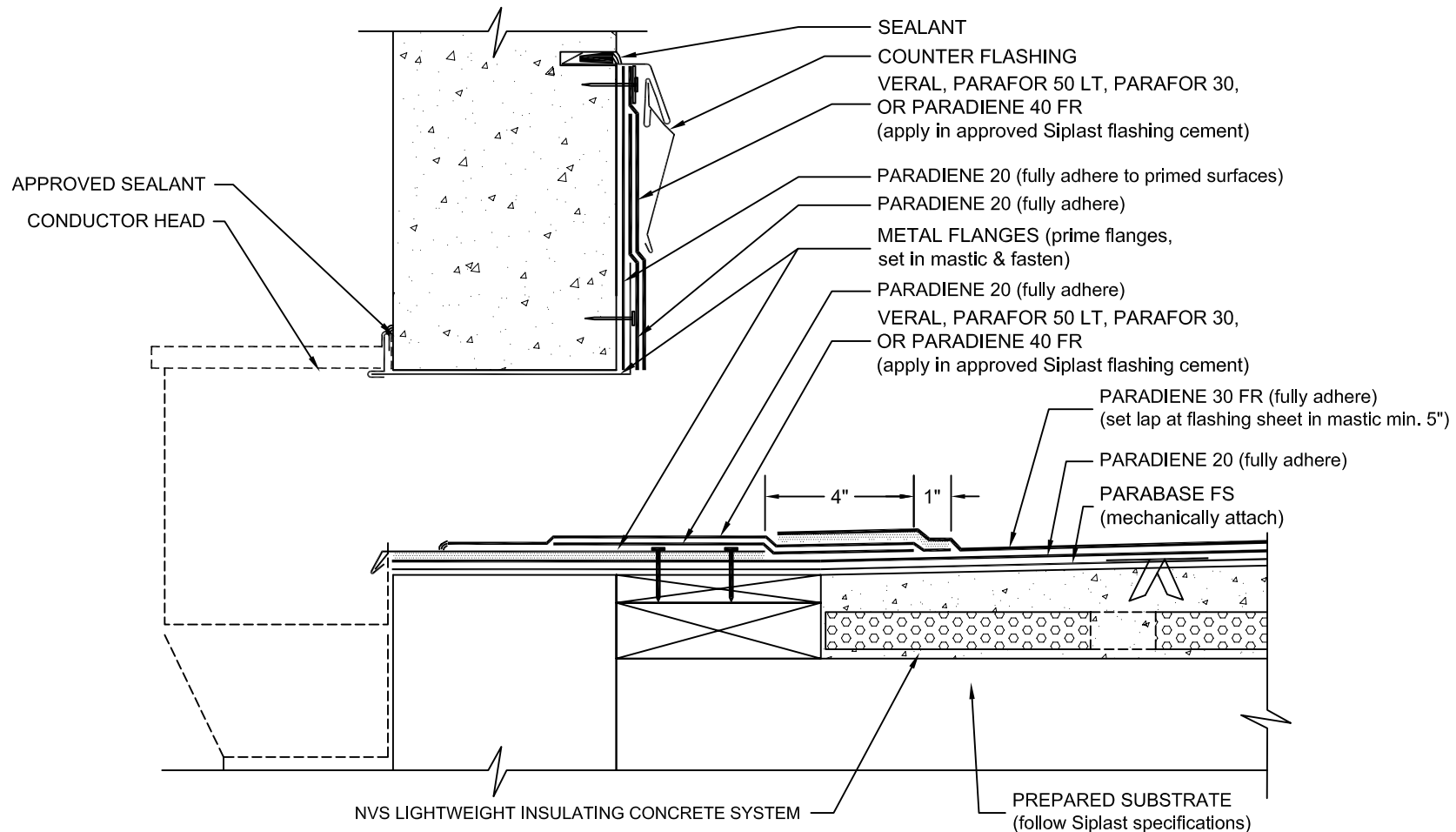


SCUPPER

PARADIENE 20/30 FR - NON VENTED SUBSTRATE ADHESIVE APPLIED FLASHINGS



- NOTES:
1. APPLY GRANULE SURFACED FLASHING SHEETS IN PA-828 FLASHING CEMENT OR SFT CEMENT. SFT CEMENT IS REQUIRED FOR VERAL ALUMINUM & STAINLESS STEEL FLASHING SHEETS.
 2. THE CARPENTRY AND METAL WORK SHOWN DEPICTS SHOP FABRICATION AND JOB-SITE ASSEMBLY. THESE COMPONENTS SHOULD BE DESIGNED/FABRICATED/INSTALLED ACCORDING TO GENERALLY ACCEPTED INDUSTRY PRACTICES, STANDARDS, AND APPROVALS.
 3. DISSIMILAR METAL TYPES SUBJECT TO ELECTROLYTIC REACTION SHOULD BE PHYSICALLY SEPARATED.
 4. REQUIREMENTS AND RECOMMENDATIONS DETAILED IN SIPLAST SPECIFICATIONS SHALL APPLY IN ADDITION TO THE ABOVE DRAWING.
 5. TAPER INSULATION AREAS AROUND THE SCUPPER OPENING TO ENSURE POSITIVE DRAINAGE.
 6. WHERE PRIMER IS INDICATED TO MAINTAIN PROPER ADHESION, TA-119 PRIMER IS REQUIRED FOR ALL PARADIENE 20 SA FLASHING REINFORCING AND STRIPPING PLY APPLICATIONS. USE PA-1125 OR PA-917 LS FOR ALL NON-PARADIENE 20 SA APPLICATIONS. CONTACT SIPLAST FOR SPECIFIC REQUIREMENTS.

N.T.S.