

# ParaGREEN™ High Volume Retention Drainage Panel

## Commercial Product Data Sheet

### Description:

ParaGREEN™ High Volume Retention Drainage Panel is a 1 in. thick, high-retention drainage panel suitable for use with vegetated roof systems and other conditions where maximizing water retention capacity is a priority. This panel is intended to be used in conjunction with ParaGREEN™ Filter Fabric for vegetated roof installations.

Contact Siplast for information on approved product uses.

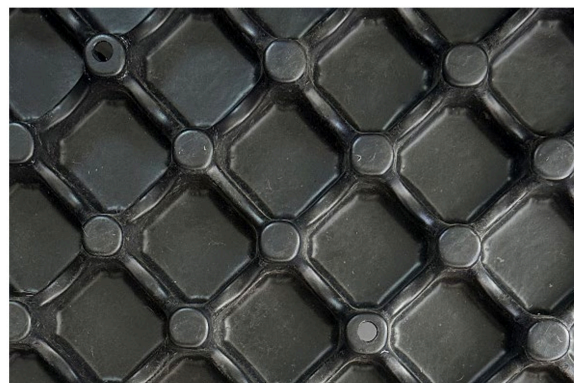
### Uses:

Drainage Mat

<b>Material</b>	100% Recycled High-Density Polypropylene
<b>Dimension</b>	4 ft. x 6 ft. x 1 in. (24 sq. ft. per Panel)
<b>Compressive Strength</b>	>7,000 psi
<b>Water Retention</b>	0.458 gal./ft <sup>2</sup> (ASTM E2398/E2398M)

Flow Rates (ASTM D4716)			
<b>Compression Applied (100 psf)</b>	1.0 Gradient 6.49 gpm/ft.	0.05 Gradient 4.19 gpm/ft.	0.02 Gradient 2.17 gpm/ft.

LEED Information	
<b>Recycled Content (% by weight)</b>	<b>Manufacture Location</b>
100%	Readyville, TN



### Application:

ParaGREEN™ High Volume Retention Drainage Panel should be installed “dimples up.” The retention panel may be filled with ParaGREEN™ Lightweight Aggregate to the finished elevation of the dimples. It should be covered with ParaGREEN™ Filter Fabric. Holes in panels are for aeration, not drainage.

Consult the installation manual for detailed application instructions.

### Storage and Handling:

All Siplast ParaGREEN™ products should be stored on a clean, flat surface.

See product packaging and the Safety Data Sheet for specific information on the safe handling of this product.

### Packaging:

- Weight per Panel: 8 lb. (3.63 kg)