

# Terapro Waterproofing & Surfacing Systems

PMMA Liquid-Applied Solutions



With you every step of the way

# High Performance. Quick Application. Unlimited Possibilities.

## Siplast Terapro Systems

Siplast's premium liquid-applied PMMA-based Terapro Waterproofing & Surfacing Systems provide our highest level of waterproofing and concrete protection for parking decks and ramps, pedestrian walkways, balconies, and vehicular traffic applications. The science of PMMA provides exceptional performance advantages and faster cure times than traditional liquid systems.

A Terapro System can be applied and trafficked within an 8-hour day,\* which is a significant financial and practical benefit for commercial buildings. By comparison, other liquid systems can require a cure time of up to three days before they can withstand traffic without sustaining damage. Additionally, Terapro solutions are not highly sensitive to atmospheric humidity during application, and Terapro base and flashing resins can be applied in temperatures as low as 23°F, which offers a great amount of flexibility with installation.

### Application Advantages



Fast cure time\*



Abrasion resistance†



Resistance to ordinary weather conditions



UV resistance



Durability



Low VOC



Solvent-free



Isocyanate-free



## PMMA for Waterproofing

First synthesized in the 1930s, polymethyl methacrylate (PMMA) soon found uses in everything from aircraft windshields to dentures. In the 1970s, a more flexible PMMA formulation for coatings was developed for waterproofing. Today, Siplast Terapro Waterproofing & Surfacing Systems offer all the benefits of PMMA technology with customized liquid solutions that are backed by Siplast's proven performance, partnership, and stringent quality control.



\* Ambient and substrate temperatures affect the application of Terapro 220/250. Refer to Terapro 220 and Terapro 250 Traffic Surfacing System Installation Guide for ambient and substrate temperature guidelines and restrictions.  
† Siplast warranties and guarantees do not provide coverage against abrasion. Refer to [siplast.com](http://siplast.com) for more information on warranty and guarantee coverage and restrictions.



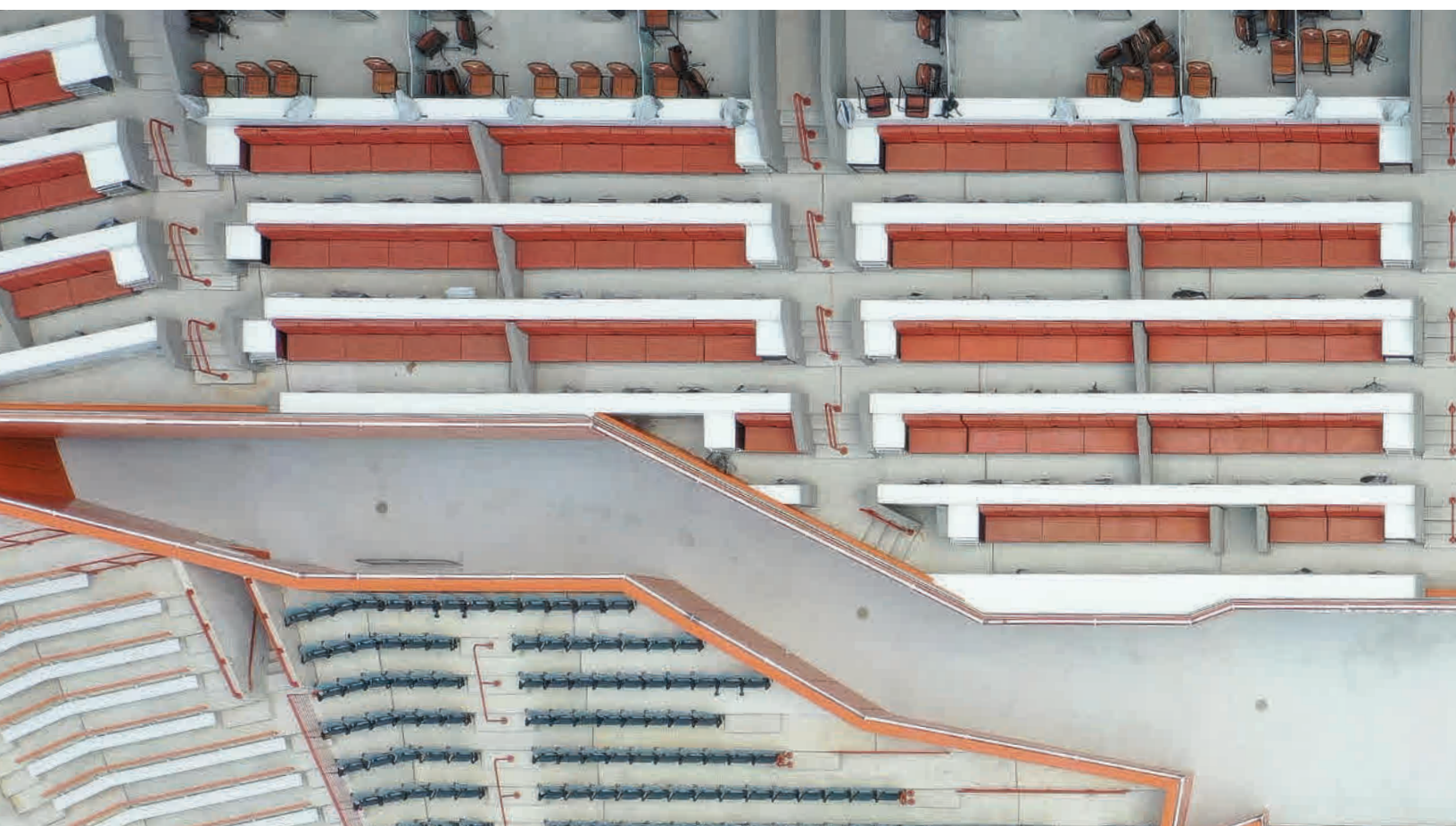
# Flexible PMMA Waterproofing Resins

Terapro Base Resin and Terapro Flashing Resin are liquid PMMA waterproofing resins that are catalyzed with Pro Catalyst to create a tough and durable monolithic protection system for any vehicular and pedestrian waterproofing projects.

## Terapro Base Resin

A multi-component, fast-curing, flexible PMMA resin for use in horizontal applications to create a seamless monolithic waterproofing system. Terapro Base Resin, when catalyzed, is combined with Pro Fleece to form the monolithic, reinforced waterproofing layer of the Terapro and Terapro VTS Systems.

- Color Available: Beige (#1013)
- Typical Set/Cure Times 68°F (20°C): Resists rainwater wash-off in 30 minutes, ready for next coat in 30 minutes, pedestrian and vehicular trafficable in 2 hours\*
- Low VOC Content: < 25 g/L (catalyzed) EPA test method 24





## Terapro Flashing Resin

A multi-component, fast-curing, flexible PMMA resin for use in vertical applications and around penetrations. Terapro Flashing Resin, when catalyzed, is combined with Pro Fleece to form a monolithic, reinforced flashing system for use in conjunction with Terapro and Terapro VTS Waterproofing Systems.

- Color Available: Pebble Gray (#7032)
- Typical Set/Cure Times 68°F (20°C): Resists rainwater wash-off in 30 minutes, ready for next coat in 45 minutes, pedestrian and vehicular trafficable in 2 hours\*
- Low VOC Content: < 25 g/L (catalyzed) EPA test method 24

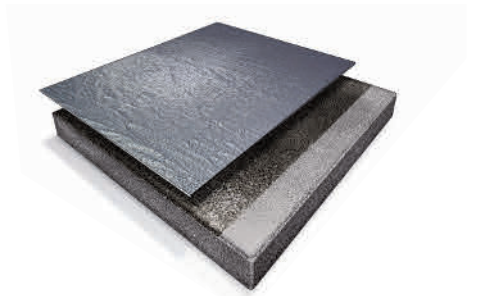


\* Ambient and substrate temperatures affect the application of Terapro 220/250. Refer to Terapro 220 and Terapro 250 Traffic Surfacing System Installation Guide for ambient and substrate temperature guidelines and restrictions.



# Concrete Protection & Surfacing

Balconies, walkways, and terraces are among the most distinctive components of building design. As exposed structural elements, their surfaces must be waterproof and provide protection against weather elements. As they are in high-access areas, they must be able to withstand foot traffic and abrasion, and applications must be safe and fast. As these spaces are highly visible, aesthetic appeal is also essential. Siplast Terapro 220 is a traffic coating system designed to protect against wear due to pedestrian traffic.



## Terapro 220 | For Pedestrian Areas

Terapro 220 is a liquid-applied surfacing layer used in a Terapro or Terapro VTS System. It can also be used with just a primer layer to create a concrete protection system. Terapro 220 can also be used with Terapro reinforced systems for use over occupied/conditioned interior spaces and include a polyester fleece fabric for additional waterproofing protection. Each layer of the system consists of a catalyzed PMMA resin. The completed high-mil thickness application is resilient, monolithic, seamless, durable, and provides protection against UV exposure, ordinary foot traffic, mechanical abuse, and many environmental contaminants.†

Suitable for balconies, terraces, and pedestrian walkways over unoccupied space

Fast-curing — ready for traffic in approximately 3 hours\* when installed properly

Tested in accordance with ASTM E303 to provide skid resistance

UV stable

Can be applied in temperatures as low as 32°F

Aggregate, color, and resin in one package allows you to catalyze, mix, and go

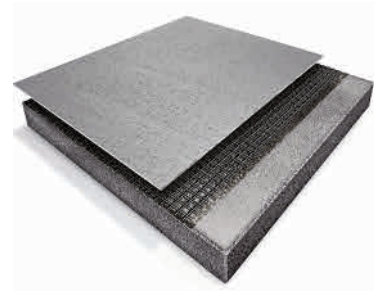
Available in 6 colors



## Terapro 250 | For Vehicular Traffic Areas

Terapro 250 is a surfacing layer used for vehicular applications. It provides PMMA waterproofing performance and added concrete protection for parking decks and ramps, vehicular areas, and pedestrian walkways over unoccupied space. Its PMMA properties allow it to achieve both a bond to the substrate and an interlaminar bond. This tenacious adhesion results in improved resistance to disbonding under the loads imposed by heavy vehicular traffic. Terapro 250's bond strength, together with the tough crystal quartz surfacing, offers exceptional durability. The completed high-mil thickness application is monolithic and seamless.

The liquid-applied, layered application consists of one coat of primer, a filled waterproofing layer, a hard-wearing quartz surfacing, and a durable pigmented finish layer. Reinforced systems for use over occupied interior spaces include a polyester fleece fabric for additional protection. Each layer of the system consists of a catalyzed PMMA resin.



Suitable for parking decks, ramps, vehicular areas, and pedestrian walkways over unoccupied space

Fast-curing — ready for traffic in approximately 3 hours\* when installed properly

Provides protection against typical vehicular fluids†

Tested in accordance with ASTM E303 to provide skid resistance

UV stable

Can be applied in temperatures as low as 32°F

Available in 6 colors

\* Ambient and substrate temperatures affect the application of Terapro 220/250. Refer to Terapro 220 and Terapro 250 Traffic Surfacing System Installation Guide for ambient and substrate temperature guidelines and restrictions.

† Siplast warranties and guarantees do not provide coverage against abrasion. Refer to [siplast.com](http://siplast.com) for more information on warranty and guarantee coverage and restrictions.

‡ Siplast warranties and guarantees do not provide coverage against traffic, physical damage/impact/abuse, or exposure to chemicals and other environmental contaminants. Refer to [siplast.com](http://siplast.com) for more information on warranty and guarantee coverage and restrictions.



# Finishes & Surfacing Options

Siplast Terapro Systems can be surfaced with hardwearing Pro Natural Quartz and Pro Color Finish for high-traffic conditions or Pro Color Finish and Pro Texture Beads for lighter-duty applications. Both surfacing options offer a solid color, clean appearance.

Easy to clean Terapro Pro Color Finish is available in a variety of standard colors, which can be used alone or applied in patterns for dramatic effects or practical purposes such as designating traffic paths.

Pro Accent Chips, available in a black/white or black/tan blend, can be broadcast into the wet Pro Color Finish just following application, creating a variegated aesthetic, breaking up the monolithic appearance of the solid color finish.

To request a physical sample, please contact your Siplast Representative.

## Pro Color with Pro Natural Quartz



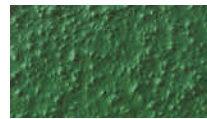
Beige #1015



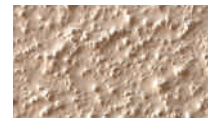
Gray #7044



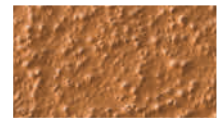
Terracotta #8081



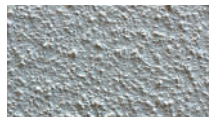
Green #6002



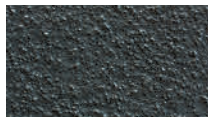
Beige #1019



Teak #8023



Gray #7042



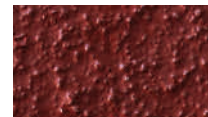
Gray #7043



Gray #7035

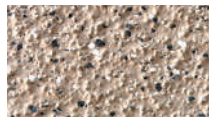


Brown #8025

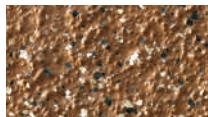


Red #311910

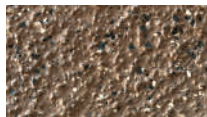
## Pro Color Finish with Pro Accent Chips



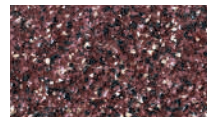
Tan PAC 50



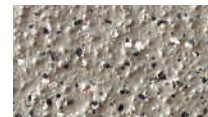
Camel PAC 60



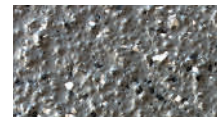
Brown PAC 70



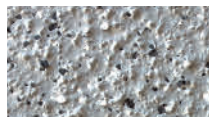
Red PAC 80



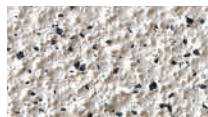
Patina PAC 40



Med Gray PAC 30



Lt. Gray PAC 20









White PAC 10

NOTE: The color samples in this document may not precisely match their physical equivalents. Always refer to physical samples before making your color choices.



# Terapro PMMA Product Portfolio

PRODUCT	DESCRIPTION	FEATURES*	PACKAGING
<b>Primers</b>			
<b>Pro Primers</b> - Pro Primer E - Pro Primer W - Pro Primer R - Pro Primer T	Two-component, resin primers for use over qualified/approved concrete substrates prior to application	<ul style="list-style-type: none"> <li>- Resins are translucent</li> <li>- Pro Primer E is also used as an accessory to STP roofing and waterproofing systems</li> <li>- Pro Primer W, Pro Primer R, and Pro Primer T Resins can be covered with Terapro Resins a minimum of 45 minutes following application</li> <li>- Pro Primer W Resin can be left exposed to UV and weather elements for up to 6 months</li> </ul>	10 kg (22 lb.) resealable metal drum 
<b>Resins</b>			
<b>Terapro Base Resin</b>	High-performance, multi-component, fast-curing PMMA resin used with Pro Fleece to form the reinforced layer	<ul style="list-style-type: none"> <li>- Available in summer and winter grades</li> <li>- Available in Beige (#1013)</li> <li>- Typical Set/Cure Times 68°F (20°C): Rainproof in 30 minutes, ready for next coat in 45 minutes, pedestrian and vehicular trafficable in 2 hours*</li> <li>- Low VOC Content: &lt; 25 g/L (catalyzed) EPA Test method 24</li> </ul>	10 kg (22 lb.) resealable metal drum 
<b>Terapro Flashing Resin</b>	High-performance, multi-component, flexible PMMA resin, when catalyzed, is combined with Pro Fleece in flashing applications in conjunction with Terapro 220 and Terapro 250 Systems	<ul style="list-style-type: none"> <li>- Available in summer and winter grades</li> <li>- Available in Pebble Gray (#7032)</li> <li>- Typical Set/Cure Times 68°F (20°C): Rainproof in 30 minutes, ready for next coat in 45 minutes, pedestrian and vehicular trafficable in 2 hours*</li> <li>- Low VOC content: &lt; 25 g/L (catalyzed) EPA test method 24</li> </ul>	10 kg (22 lb.) resealable metal drum 
<b>Terapro VTS Resin</b>	Multi-component, fast-curing, PMMA resin, that when combined with Terapro VTS Quartz Filler and catalyzed, is used as a waterproofing and/or surfacing layer of Terapro 220 and Terapro 250 Systems	<ul style="list-style-type: none"> <li>- Available in translucent tan color</li> <li>- Must be mixed with Terapro Quartz Filler and Pro Catalyst prior to application</li> <li>- Typical Set/Cure Times 68°F (20°C): Rainproof in 30 minutes, ready for next coat in 2 hours, pedestrian and vehicular trafficable in 1 hour†</li> <li>- Low VOC content: &lt; 25 g/L (catalyzed) EPA test method 24</li> </ul>	10 kg (22 lb.) resealable metal drum 
<b>Color and Surfacing Finish Layers</b>			
<b>Terapro 220 Resin / Aggregate</b>  <b>Terapro 250 Resin / Aggregate</b>	A blend of pigmented Terapro PMMA resin and aggregate. When catalyzed, Terapro Resin/Aggregate is used as surface protection providing skid-resistant† properties.	<ul style="list-style-type: none"> <li>- Aggregate, color, and resin in one package allows you to catalyze, mix, and go</li> <li>- Combined with the fast-curing properties of PMMA make Terapro 220/250 application extremely efficient</li> <li>- Multiple Colors Available: Beige, Brown, and Gray</li> <li>- Quick Set/Cure Times 68°F (20°C): Rainproof in 30 minutes, pedestrian and vehicular trafficable in 2 hours†</li> <li>- Low VOC Content: &lt; 25 g/L (catalyzed) EPA Test Method 24</li> </ul>	25 kg (55 lb.) resealable metal drum 
<b>Pro Color Finish Resin</b>	Pigmented, multi-component, fast-curing PMMA resin for use in Terapro 220 and Terapro 250 Systems	<ul style="list-style-type: none"> <li>- Available in a variety of standard colors</li> <li>- Can be used alone or applied in patterns for dramatic effects or practical purposes such as designating private traffic control paths</li> <li>- Typical Set/Cure Times 68°F (20°C): Rainproof in 30 minutes, ready for next coat in 45 minutes, pedestrian and vehicular trafficable in 2 hours†</li> <li>- Low VOC Content: &lt; 25 g/L (catalyzed) EPA test method 24</li> </ul>	10 kg (22 lb.) resealable metal drum 

\* Values stated are approximate and subject to normal manufacturing variation. These values are not guaranteed and are provided solely as a guide.

† Siplast warranties and guarantees do not provide coverage against abrasion. Refer to siplast.com for more information on warranty and guarantee coverage and restrictions.

‡ Ambient and substrate temperatures affect the application of Terapro 220/250. Refer to Terapro 220 and Terapro 250 Traffic Surfacing System Installation Guide for ambient and substrate temperature guidelines and restrictions

## Terapro PMMA Product Portfolio

PRODUCT	DESCRIPTION	FEATURES*	PACKAGING
<b>Resins</b>			
<b>Pro Matrix Resin</b>	Multi-component, fast-curing, fibrated PMMA resin for specialty flashing applications	<ul style="list-style-type: none"> <li>- For use in situations where application of fleece-reinforced and Terapro flashing is impractical due to flashing configuration</li> <li>- Available in Light Beige</li> <li>- Typical Set/Cure Times 68°F (20°C): Rainproof in 30 minutes, ready for next coat in 45 minutes, pedestrian and vehicular trafficable in 2 hours†</li> </ul>	10 kg (22 lb.) resealable metal drum
<b>Pro Mortar</b>	High-density, multi-component, fast-curing, PMMA resin-based mortar used to patch concrete surfaces prior to application of Terapro 220 and Terapro 250 Systems	<ul style="list-style-type: none"> <li>- Two-component kit consisting of Pro Mortar Resin and Pro Mortar Aggregate</li> <li>- Once mixed, Pro Mortar can be catalyzed with four bags of Pro Catalyst to initiate cure</li> <li>- Typical Set/Cure Times 68°F (20°C): Rainproof in 30 minutes, ready for next coat in 45 minutes, pedestrian and vehicular trafficable in 1 hour†</li> <li>- Low VOC Content: &lt; 25 g/L (catalyzed) EPA test method 24</li> </ul>	<ul style="list-style-type: none"> <li>- Two bags of Part B aggregate are required per pail of Part A liquid</li> <li>- Pro Mortar Resin (Part A): 8.25 kg (18.2 lb.) pail</li> <li>- Pro Mortar Aggregate (Part B): 50 kg (110.4 lb.) bag (2 bags @ 25 kg each)</li> </ul>
<b>Pro Paste Resin</b>	High-performance multi-component, fast-curing, PMMA resin paste used for remediation of depressions in substrate surfaces or other surface irregularities prior to application of Terapro Systems	<ul style="list-style-type: none"> <li>- Available in Pebble Gray (#7032)</li> <li>- Typical Set/Cure Times 68°F (20°C): Rainproof in 30 minutes, ready for next coat in 60 minutes, pedestrian and vehicular trafficable in 3 hours†</li> <li>- Low VOC Content: &lt; 25 g/L (catalyzed) EPA test method 24</li> </ul>	10 kg (22 lb.) resealable metal drum
<b>Aggregate</b>			
<b>Terapro VTS Quartz</b>	Natural silica aggregate used as a surfacing for Terapro 250 Systems	<ul style="list-style-type: none"> <li>- Offers high-performance waterproofing protection over unoccupied (exterior) spaces</li> <li>- Provides opportunities for color coding</li> <li>- Available in Light Tan</li> </ul>	50 lb. (22.7 kg) paper bags
<b>Accessories</b>			
<b>Pro Prep</b>	Clear, blended solvent used to clean the transition areas of in-place Terapro applications at tie-ins, repairs, and between staged coats of resin	<ul style="list-style-type: none"> <li>- Can be used to clean metal and plastic surfaces prior to application of Terapro Systems</li> <li>- Can be utilized for cleaning spills, tools, and equipment</li> </ul>	1 gal (3.8 L) resealable metal F-style can  5 gal (19 L) resealable metal pail with pour spout and removable lid



## Accessories

<b>Pro Prep M</b>	Clear, blended solvent used to clean the transition areas of in-place Terapro applications at tie-ins, repairs, and between staged coats of resin	<ul style="list-style-type: none"> <li>- Specifically formulated to meet the regulations for select air-quality districts; Check with your Siplast representative to see if this meets your local air quality district guidelines</li> <li>- Can be used to clean metal and plastic surfaces prior to application of Terapro Systems</li> <li>- Can be utilized for cleaning spills, tools, and equipment</li> </ul>	5 gal (19 L) resealable metal pail with pour spout and removable lid
<b>Pro Catalyst Powder</b>	White granular powder that is a reactive agent for use in initiating polymerization and curing of Terapro PMMA resins	<ul style="list-style-type: none"> <li>- Stable if stored and used in accordance with Siplast guidelines</li> <li>- Must use butyl or nitrile gloves when mixing</li> <li>- VOC Content: 50 g/L (catalyzed)</li> </ul>	Vented box containing 10 premeasured 0.1 kg (100 g) (3.2 oz) plastic bags (1 kg total) with 1 tbsp. measuring scoop included
<b>Pro Catalyst Liquid</b>	Reactive agent used to induce curing of Terapro PMMA resins	<ul style="list-style-type: none"> <li>- Stable if stored and used in accordance with Siplast guidelines</li> <li>- Must use butyl or nitrile gloves when mixing</li> <li>- VOC Content: &lt; 50 g/L (catalyzed)</li> </ul>	Plastic container with a collapsible silicone measuring cup and a plastic tablespoon to facilitate accurate measurement
<b>Pro Fleece</b>	Non-woven, needle-punched polyester fabric reinforcement designed for compatibility with Terapro liquid products	<ul style="list-style-type: none"> <li>- Resilient layer of liquid-applied waterproofing systems</li> <li>- Available in White</li> <li>- Nominal Thickness: 40 mils</li> <li>- Weight: 110 g/m<sup>2</sup>*</li> <li>- Water Absorption: &lt; 1%</li> </ul>	Roll Dimensions: - 12 in. x 82 ft. (305 mm x 25 m) - 12 in. x 164 ft. (305 mm x 50 m) - 25 in. x 164 ft. (630 mm x 50 m) - 41 in. x 164 ft. (1050 mm x 50 m)
<b>Pro Thixo</b>	Liquid additive that increases the viscosity of Terapro and Pro Color Finish resins	<ul style="list-style-type: none"> <li>- Imparts thixotropic properties, allowing application on sloped surfaces without slumping or sliding</li> </ul>	1L (2.20 lb.) resealable metal container
<b>Pro Grout Tape</b>	Filament-reinforced masking tape designed for use in the construction of Terapro 220 and Terapro 250 Systems	<ul style="list-style-type: none"> <li>- Available in widths of 1/2", 3/4", and 1"</li> <li>- Applied over the waterproofing layers to create joints and/or color breaks</li> </ul>	Individual rolls in plastic bags
<b>Pro Grid Reinforcement</b>	Fiberglass scrim reinforcement specially designed to embed in Pro Primer products used in Terapro 220 and Terapro 250 Systems	<ul style="list-style-type: none"> <li>- Helps mitigate telegraphing cracks through force distribution</li> <li>- Efficient installation – prime, reinforce, and waterproof in one step</li> </ul>	450 ft. x 3.91 ft. roll

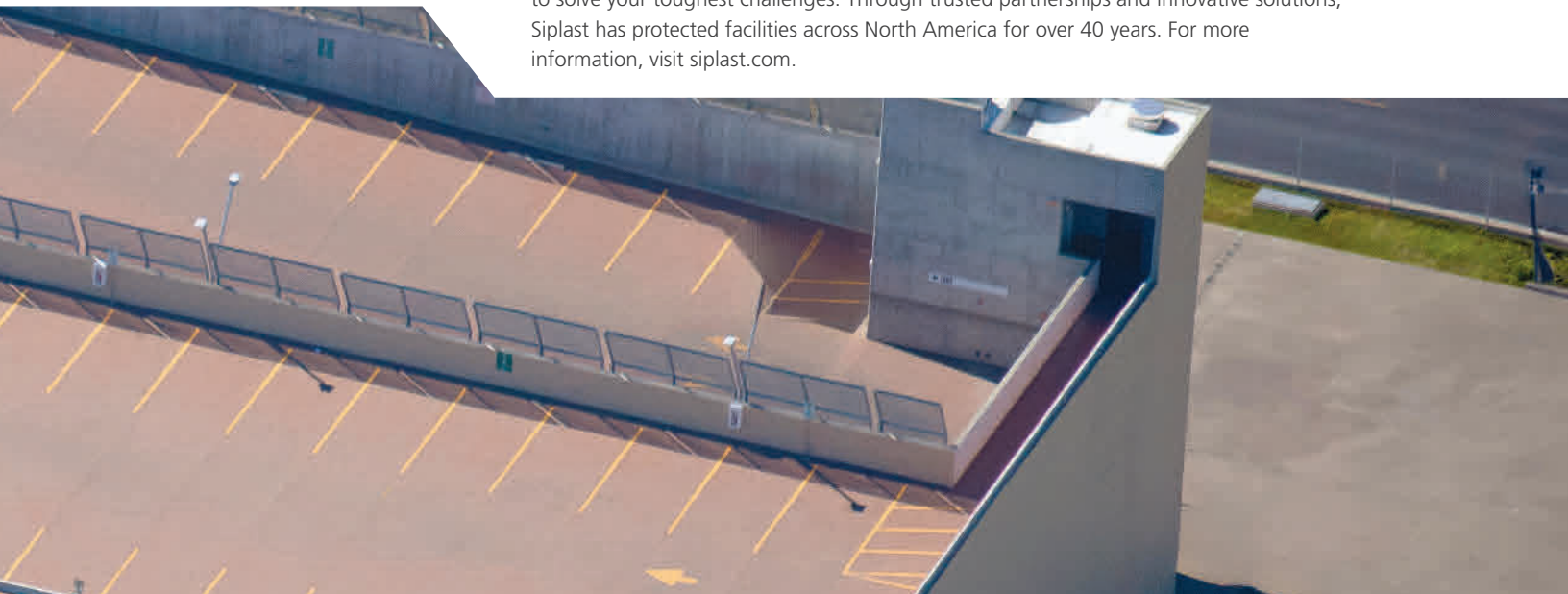
\* Values stated are approximate and subject to normal manufacturing variation. These values are not guaranteed and are provided solely as a guide.

† Ambient and substrate temperatures affect the application of Terapro 220/250. Refer to Terapro 220 and Terapro 250 Traffic Surfacing System Installation Guide for ambient and substrate temperature guidelines and restrictions.



## With you every step of the way

Siplast, a leader in roofing, waterproofing, and building enclosure solutions, is working to solve your toughest challenges. Through trusted partnerships and innovative solutions, Siplast has protected facilities across North America for over 40 years. For more information, visit [siplast.com](http://siplast.com).





With you every step of the way

CANADA  
19748 86 Ave.  
Unit 155  
Langley, BC  
Canada V2Y 1Z5  
1.877.233.2338

UNITED STATES  
14911 Quorum Dr.  
Suite 600  
Dallas, TX 75254  
469.995.2200

[Siplast.com](https://www.Siplast.com)

©2024 SIPLAST • SIPP027-1124 444303-0225